

RATZLAFF ADDITION TO WICHITA, SEDGWICK COUNTY, KANSAS



SCALE: 1" = 20'

• = 1/2" REBAR W/PEC CAP UNLESS OTHERWISE NOTED

STATE OF KANSAS }
COUNTY OF SEDGWICK } SS

WE, PROFESSIONAL ENGINEERING CONSULTANTS, P.A., ENGINEERS AND SURVEYORS IN AFORESAID STATE AND COUNTY, DO HEREBY CERTIFY THAT OF THIS _____ DAY OF _____, 2005, WE HAVE SURVEYED AND PLATTED RATZLAFF ADDITION TO WICHITA, SEDGWICK COUNTY, KANSAS, INTO A LOT AND A BLOCK, THE SAME BEING DESCRIBED AS FOLLOWS:

A TRACT OF LAND IN THE SOUTHWEST QUARTER OF SECTION 4, TOWNSHIP 27 SOUTH, RANGE 1 WEST OF THE SIXTH PRINCIPAL MERIDIAN, MORE PARTICULARLY DESCRIBED AS FOLLOWS: BEGINNING AT THE NW CORNER OF LOT 8, BLOCK 1, REFLECTION RIDGE, AN ADDITION TO WICHITA, SEDGWICK COUNTY, KANSAS; THENCE BEARING S89°36'01" W, A DISTANCE OF 46.00 FEET; THENCE BEARING S0°48'59"E, A DISTANCE OF 30.5 FEET; THENCE BEARING S25°01'43"E, A DISTANCE OF 112.16 FEET TO THE WEST LINE OF LOT 8, THENCE BEARING N0°48'59"W, ALONG THE WEST LINE OF LOT 8, A DISTANCE OF 132.46 FEET TO THE POINT OF BEGINNING.

JAMES R. BECKETT, R.L.S. NO. 832
PROFESSIONAL ENGINEERING CONSULTANTS, P.A.

A DRAINAGE PLAN HAS BEEN APPROVED FOR THIS PLAT. ALL DRAINAGE EASEMENTS, RIGHTS-OF-WAY, OR RESERVES SHALL REMAIN AT ESTABLISHED GRADES AND UNOBSTRUCTED TO ALLOW FOR THE CONVEYANCE OF STORM WATER, UNLESS MODIFIED WITH THE APPROVAL OF THE CITY ENGINEER.

KNOW ALL MEN BY THESE PRESENTS THAT WE, THE UNDERSIGNED PROPERTY OWNERS OF THE LAND AS ABOVE SET FORTH IN THE SURVEYOR'S CERTIFICATE, HAVE CAUSED THE LAND TO BE SURVEYED AND PLATTED INTO A LOT AND A BLOCK, THE SAME TO BE KNOWN AS RATZLAFF ADDITION TO WICHITA, SEDGWICK COUNTY, KANSAS.

OWNERS:
CRAIG RATZLAFF AND TAMMY RATZLAFF, HUSBAND AND WIFE

CRAIG RATZLAFF

TAMMY RATZLAFF

STATE OF KANSAS }
COUNTY OF SEDGWICK } SS

THIS INSTRUMENT WAS ACKNOWLEDGED BEFORE ME ON THIS _____ DAY OF _____, 2005, BY CRAIG RATZLAFF, OWNER.

_____, NOTARY PUBLIC

MY APPOINTMENT EXPIRES: _____

STATE OF KANSAS }
COUNTY OF SEDGWICK } SS

THIS INSTRUMENT WAS ACKNOWLEDGED BEFORE ME ON THIS _____ DAY OF _____, 2005, BY TAMMY RATZLAFF, OWNER.

_____, NOTARY PUBLIC

MY APPOINTMENT EXPIRES: _____

THIS PLAT OF RATZLAFF ADDITION TO WICHITA, SEDGWICK COUNTY, KANSAS, HAS BEEN SUBMITTED TO AND APPROVED BY THE WICHITA-SEDGWICK COUNTY METROPOLITAN AREA PLANNING COMMISSION, WICHITA, KANSAS.

DATED THIS _____ DAY OF _____, 2005.

WICHITA-SEDGWICK COUNTY METROPOLITAN AREA PLANNING COMMISSION

_____, CHAIRMAN

_____, SECRETARY

JOHN L. SCHLEGEL

REVIEWED IN ACCORDANCE WITH K.S.A. 58-2005 ON THIS _____ DAY OF _____, 2005.

TRICIA L. ROBELLO, LS #1246
DEPUTY COUNTY SURVEYOR
SEDGWICK COUNTY KANSAS

THIS PLAT IS APPROVED AND ALL DEDICATIONS SHOWN HEREON, IF ANY ARE ACCEPTED BY THE CITY COUNCIL OF THE CITY OF WICHITA, KANSAS, THIS _____ DAY OF _____, 2005.

_____, MAYOR

_____, CITY CLERK

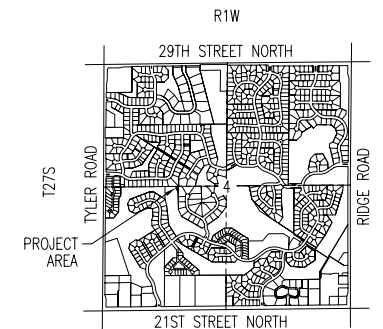
ENTERED ON TRANSFER RECORD THIS _____ DAY OF _____, 2005.

_____, COUNTY CLERK

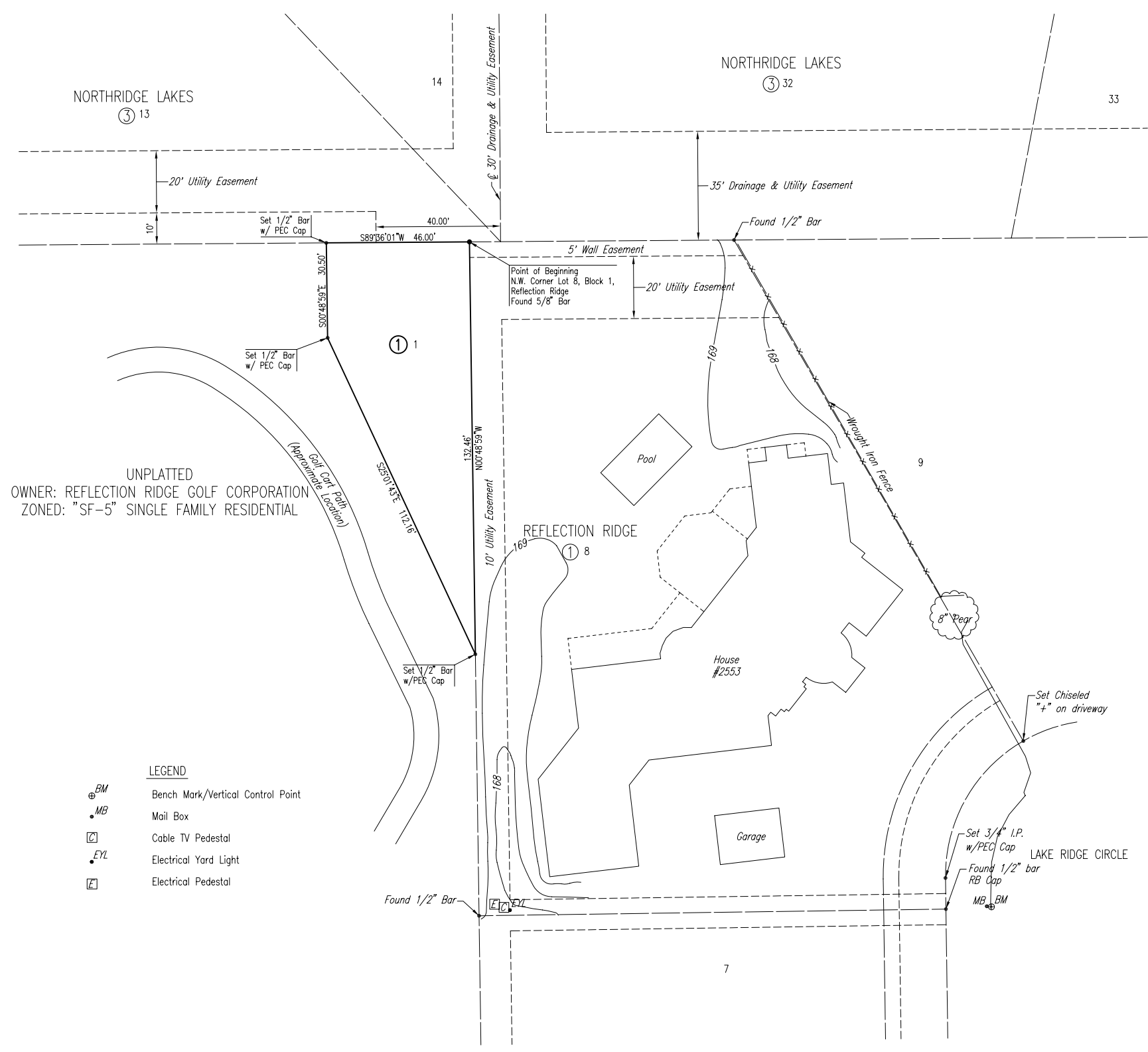
THIS IS TO CERTIFY THAT THIS INSTRUMENT WAS FILED FOR RECORD IN THE REGISTER OF DEEDS OFFICE AT _____ M., ON THE _____ DAY OF _____, 2005.

_____, REGISTER OF DEEDS

_____, DEPUTY



VICINITY MAP



LEGEND

- ⊕ BM Bench Mark/Vertical Control Point
- MB Mail Box
- ⊠ Cable TV Pedestal
- EYL Electrical Yard Light
- ⊠ Electrical Pedestal