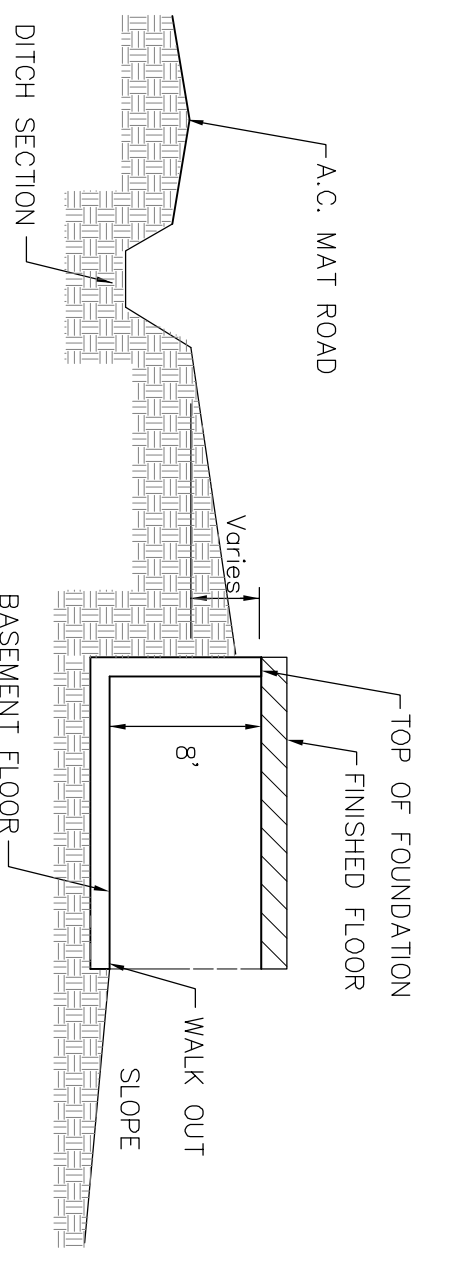
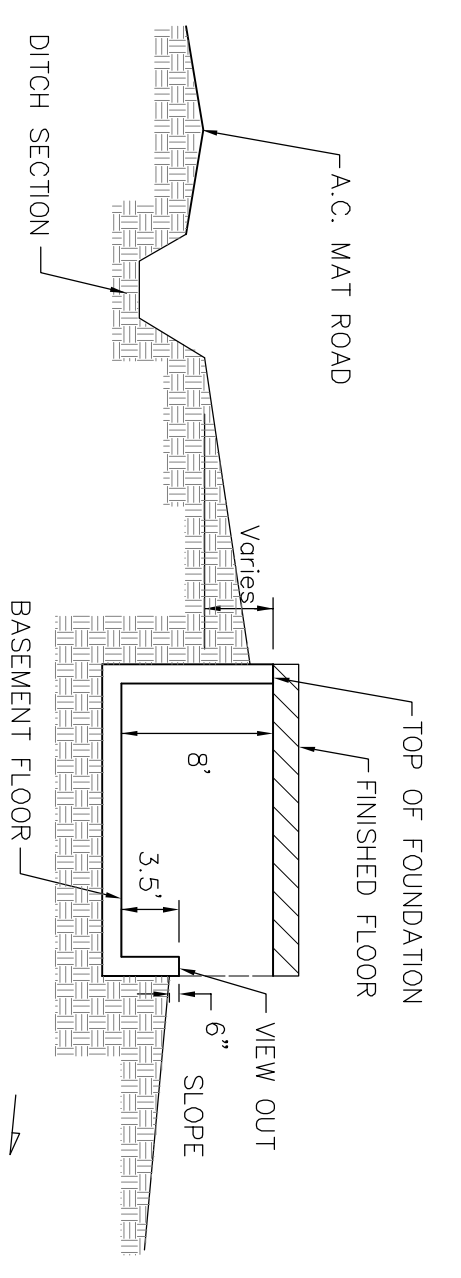
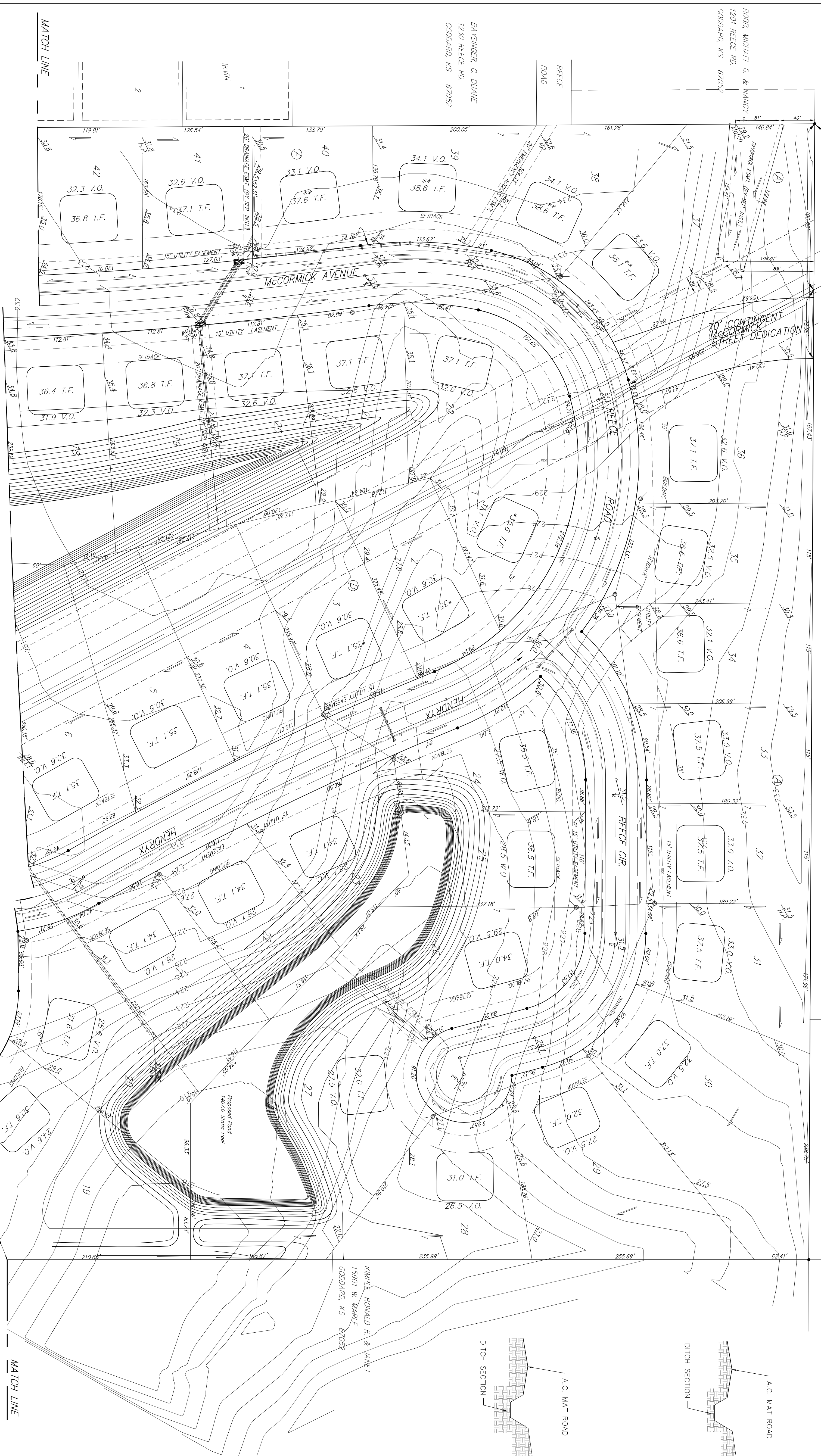
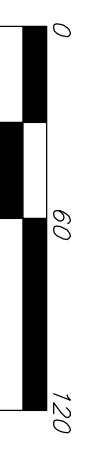


NEVILLE FAMILY TRUST II  
9625 W MAPLE  
WICHITA, KS 67209

HICKA, REX A. & DONA K.  
501 S. 162ND ST. W.  
GODDARD, KS 67052

KIMBLE, RONALD R. & JANET  
15901 W MAPLE  
GODDARD, KS 67052



BOUNDARY:  
TOP OF 1" FIN. 12" DEEP E1/4 COR.  
SEC. 27, T8S, R-2E, S-4W  
ELEV. 4 (2005 CITY DATUM)

\*\* Lots 37-40, Block A will  
require 30" entrance pipe.

MINIMUM BUILDING PAD ELEVATION FOR  
LOWEST OPENING TO THE STRUCTURES

LOT	BLOCK	CITY DATUM	MSL
1-22	B	228.6	1416
19-28	A	223.6	1411
1,3,4,5	A	222.6	1410

Revised 11/20/04 by AEG per NEM (Ditch Grades, Lots 37-40, Bk. A)  
Revised 3/9/04 by AEG per NEM (Back Yard Grades, Lots 31-35, Bk. A)  
Revised 2/17/03 by BDT per NEM (Lot 29, Bk. A)  
Revised 8/19/02 by AEG per NEM  
Revised 7/8/02 by AEG per NEM

**REECE FARMS ESTATES  
GRADING PLAN  
WICHITA, KANSAS**

**BAUGHMAN COMPANY P.A.**  
ENGINEERING, SURVEYING, & PLANNING  
318-262-7271 • 315 ELLIS • WICHITA, KANSAS 67211

DESIGN	DRAWN	APPROVED	DATE	SCALE
NGW	AH/LAB	NGW	6/15/98	1"=60'
PROJECT NUMBER			SHEET	OF
			1	3