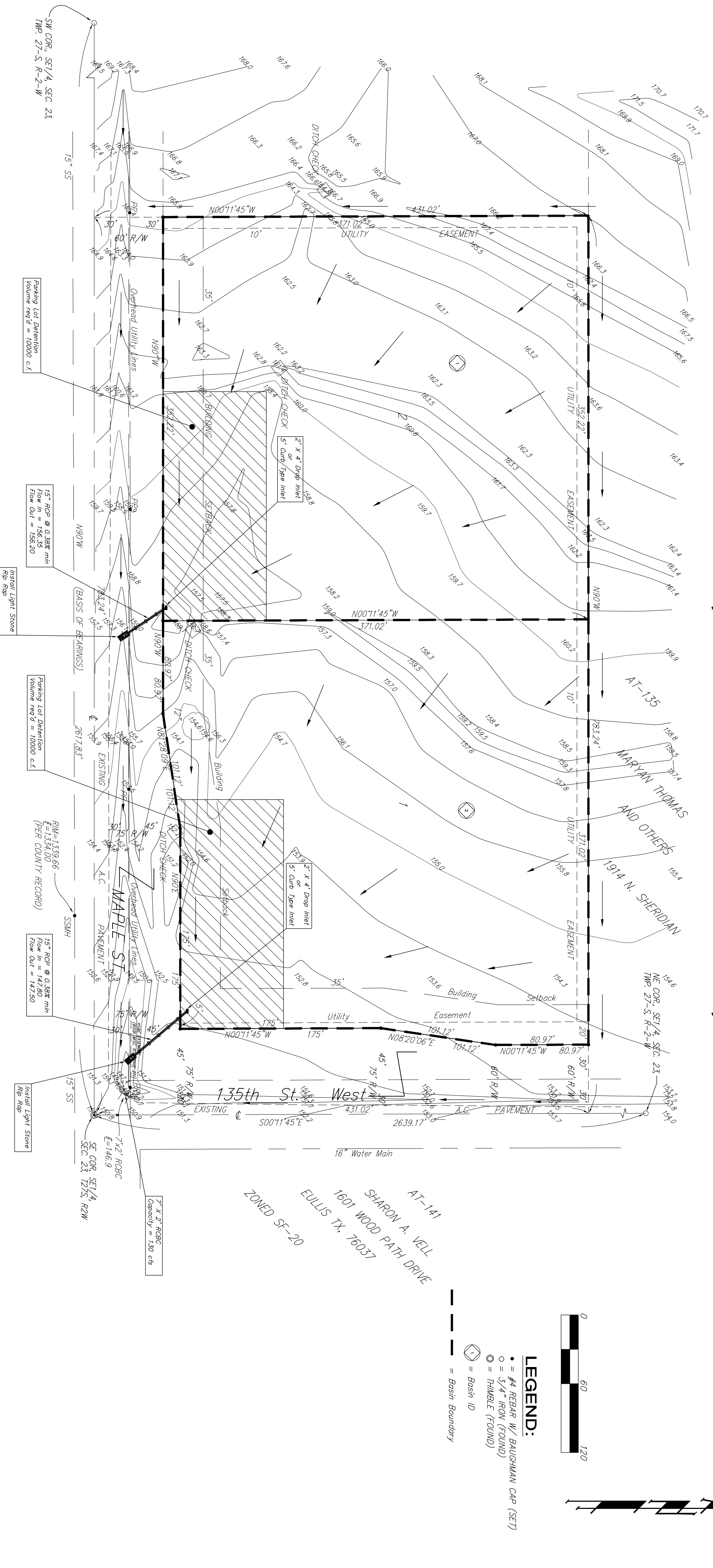


DRAINAGE PLAN

RIVERSIDE HEALTH SYSTEM ADDITION

WICHITA, SEDGWICK COUNTY, KANSAS



Developed Flow Rates by the Rational Method

Drainage Area (acres)	C ₂	C ₁₀₀	T _c (min.)	I _s (in/hr)	I ₁₀₀ (in/hr)	Q _s (cfs)	Q ₁₀₀ (cfs)
1	0.9	0.9	15	4.56	7.37	12.3	19.9
2	0.4	0.4	15	4.56	7.37	5.5	8.8

Pre-Developed Flow Rates by the Rational Method

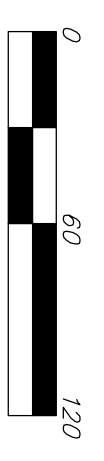
Drainage Area (acres)	C ₂	C ₁₀₀	T _c (min.)	I _s (in/hr)	I ₁₀₀ (in/hr)	Q _s (cfs)	Q ₁₀₀ (cfs)
1	0.4	0.4	15	4.56	7.37	5.5	8.8
2	0.4	0.4	15	4.56	7.37	5.5	8.8

Pre-Developed Flow Rates by the Rational Method

AT-146-12
ZONED SF-20

HOMER L. SHULTS
14431 MAPLE
WICHITA, KS

AT-141
SHARON A. VELL
1601 WOOD PATH DRIVE
EULLIS TX. 76037
ZONED SF-20



- LEGEND:**
- = #4 REBAR W/ BAUGHMAN CAP (SET)
 - = 3/4" IRON (FOUND)
 - ⊙ = THIMBLE (FOUND)
 - = Basin ID
 - = Basin Boundary



NOTE: The proposed drainage plan provided herein is a generally defined plan to follow for design. It is recognized and assumed that upon the final design of street and storm sewer improvements within this plat that the designer will modify or alter the general drainage plan as necessary in order to implement the installation of the improvements to obtain the most economical design and construction possible.

VICINITY MAP

BENCHMARK
City of Wichita Bench Mark Disc - NE Corner
of Intersection on Roadway, 34' SW to Iron
In Section Corner.
Elev = 150.20

SW COR, SE1/4, SEC. 23
T14N, R21S, K-2-W

NE COR, SE1/4, SEC. 23
T14N, R21S, K-2-W

SE COR, SE1/4,
SEC. 23, T21S, R21W