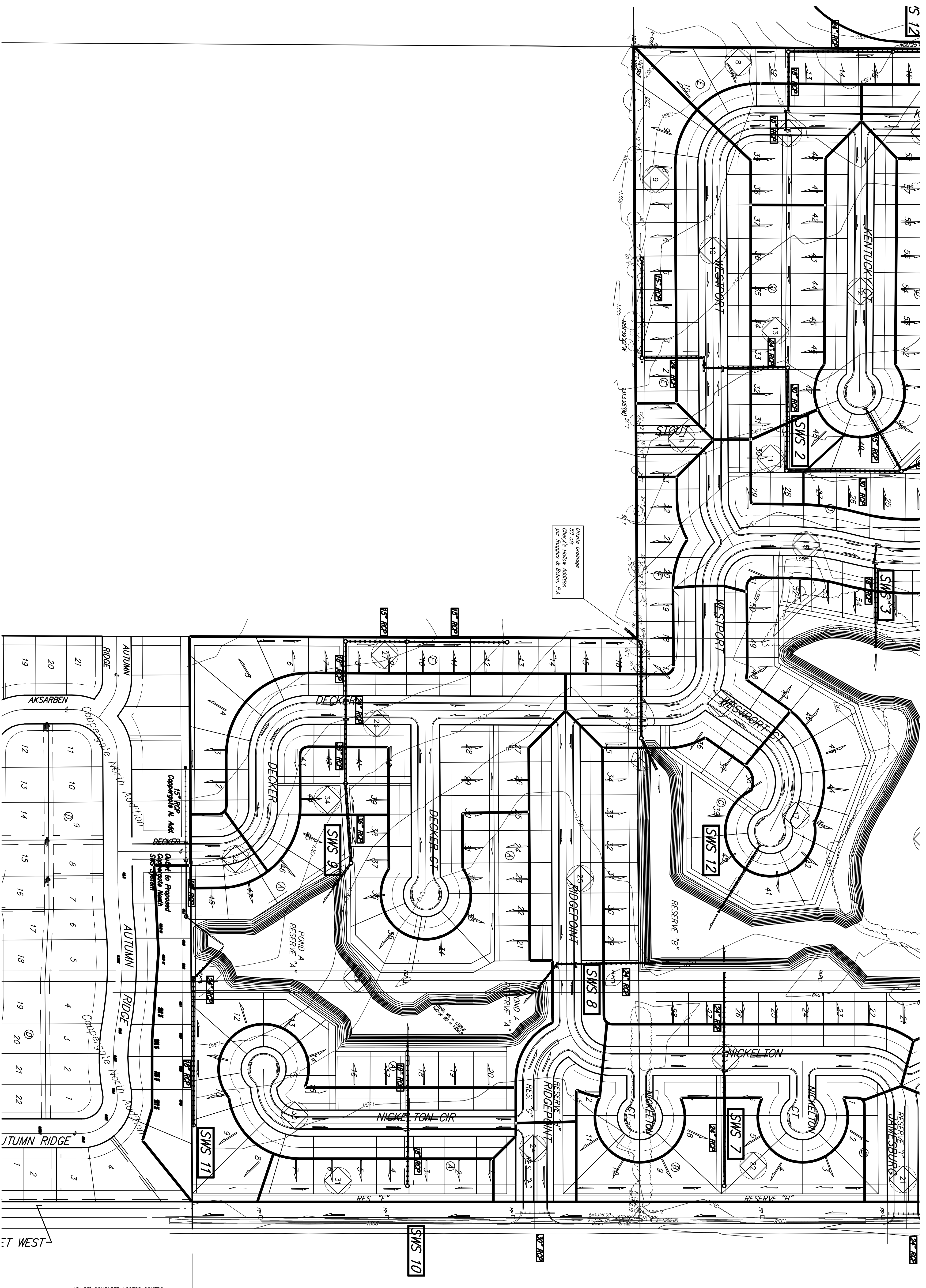
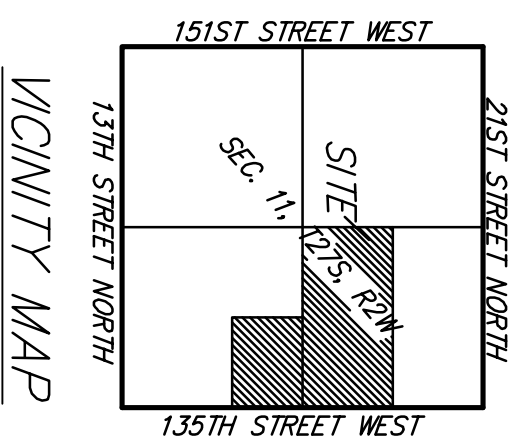
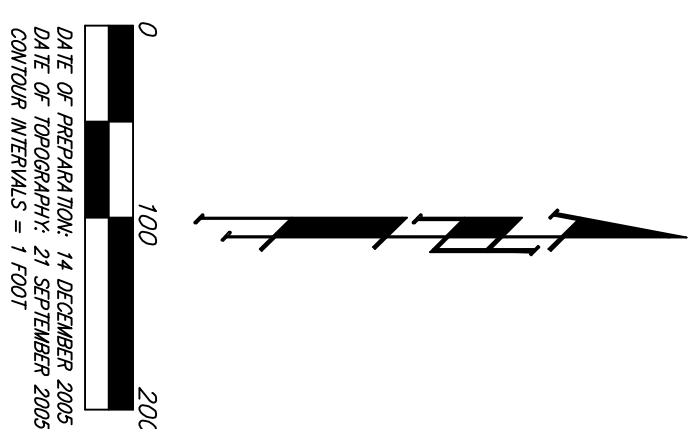


DRAINAGE PLAN SILVERTON ADDITION WICHITA, SEDGWICK COUNTY, KANSAS



Onsite Drainage
SWS are Higher Addition
per Ruppel & Bohn, P.A.

454.53' COMPLETE ACCESS CONTROL



NOTE : Floodway, Floodplain, and Base Flood Elevations are scaled per location per Preliminary FEMA FIRW Map Panel 310 of 700 for Sedgwick County, Kansas.