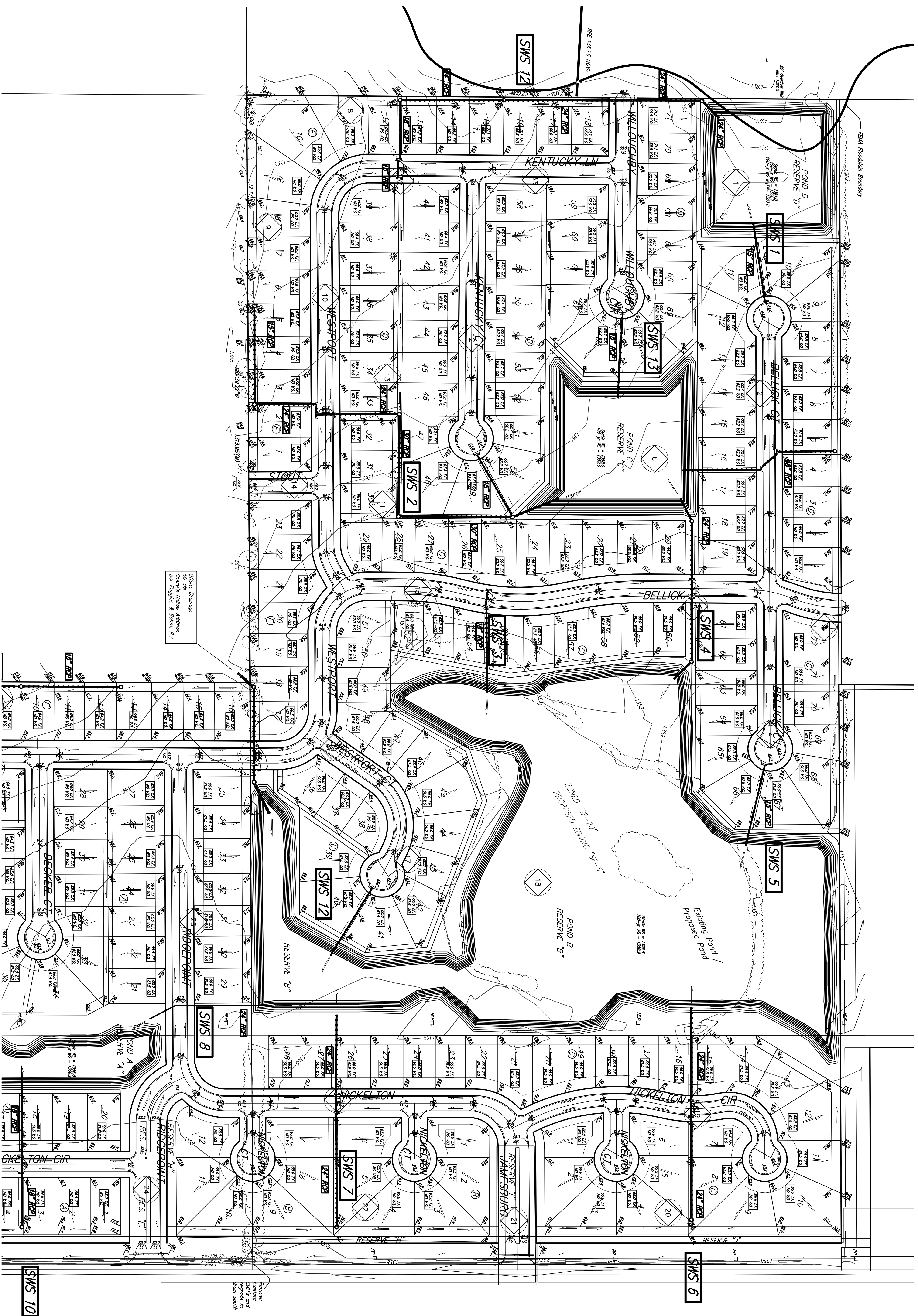


GRADING PLAN SILVERTON ADDITION WICHITA, SEDGWICK COUNTY, KANSAS



Onsite Drainage
50' Overlay's Hollow Addition
per Hughes & Bawn, P.A.

Remove
Existing
Cuts and
Pipes to
Per. 2004

NOTE : Floodway, Floodplain, and Base Flood Elevations are scaled per location per Preliminary FEMA FIRI Map Panel 310 of 700 for Sedgwick County, Kansas.

ANNUAL RAINFALL PAID ELEVATIONS FOR LOWEST OPENING TO THE STRUCTURES	LOT	BLOCK	ELEVATION
12-21, 33-37	A	1802.9	1802.9
45-48	A	1802.9	1802.9
12-36	C	1802.9	1802.9
39-68	C	1802.9	1802.9
10-11	D	1806.0	1806.0
13-29	D	1802.1	1802.1
49-53, 62-65	D	1802.1	1802.1
67-71	D	1805.6	1805.6
10-18	E	1806.6	1806.6

