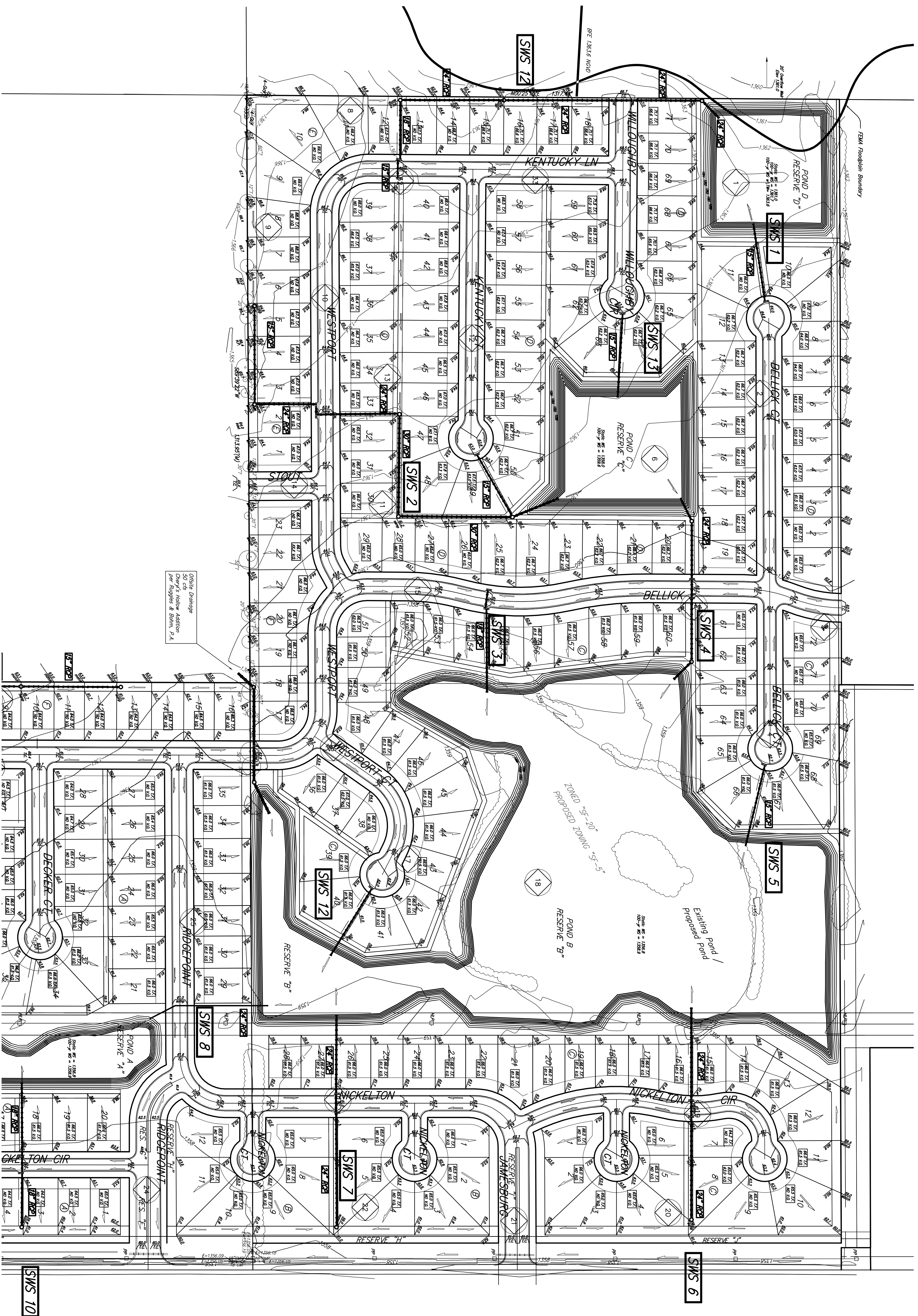


# GRADING PLAN SILVERTON ADDITION WICHITA, SEDGWICK COUNTY, KANSAS



On-site Drainage  
50' Overlay's Hollow Addition  
per Hughes & Bawn, P.A.

NOTE : Floodway, Floodplain, and Base Flood Elevations are scaled per location per Preliminary FEMA FIR Map Panel 310 of 700 for Sedgwick County, Kansas.

