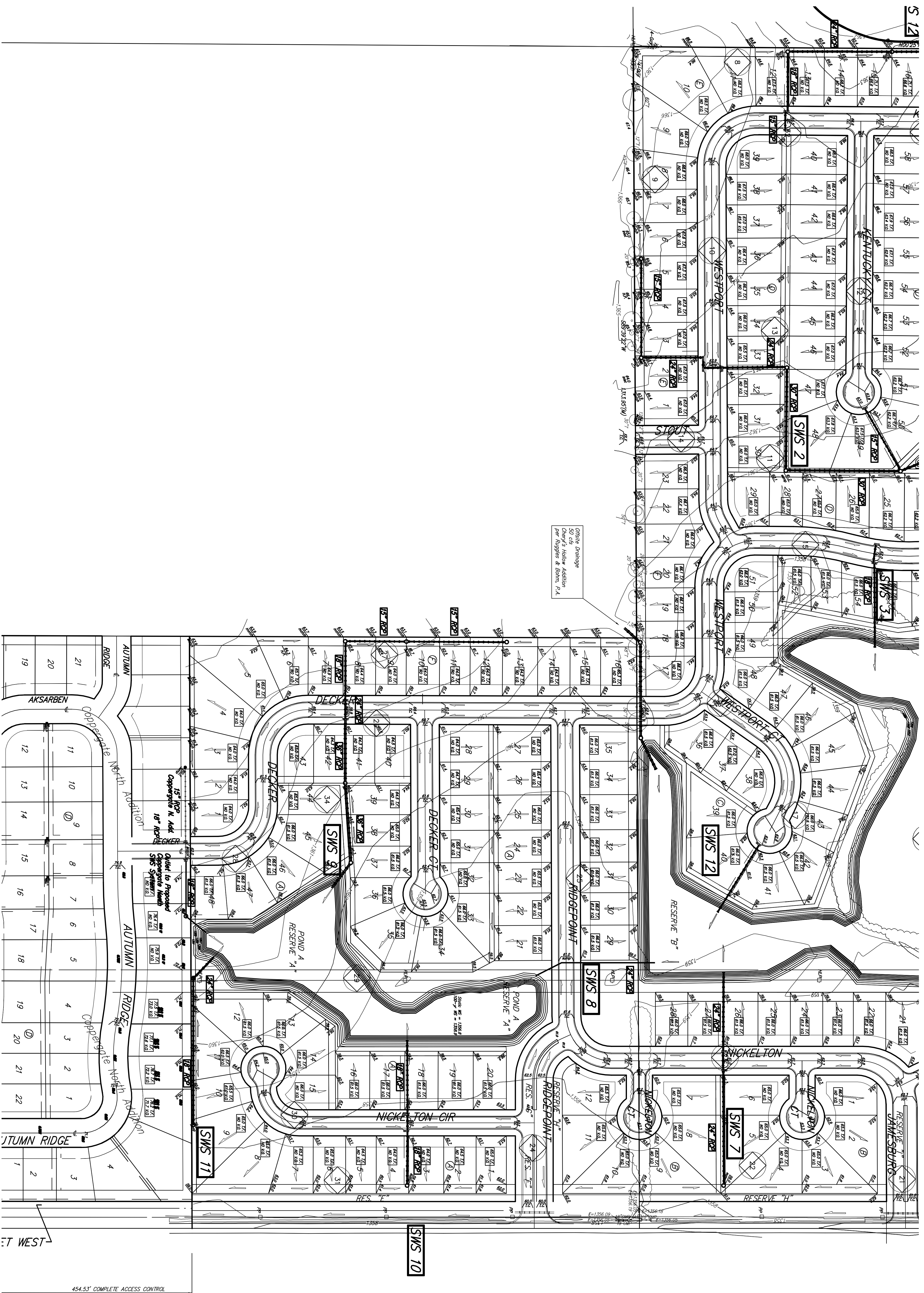


GRADING PLAN SILVERTON ADDITION WICHITA, SEDGWICK COUNTY, KANSAS



Onsite Drainage
50 cfs Higher Addition
Per Ruppberg & Bohn, P.A.

NOTE : Floodway, Floodplain, and Base Flood Elevations are scaled per location per Preliminary FEMA FIRW Map Panel 310 of 700 for Sedgwick County, Kansas.



454.53' COMPLETE ACCESS CONTROL