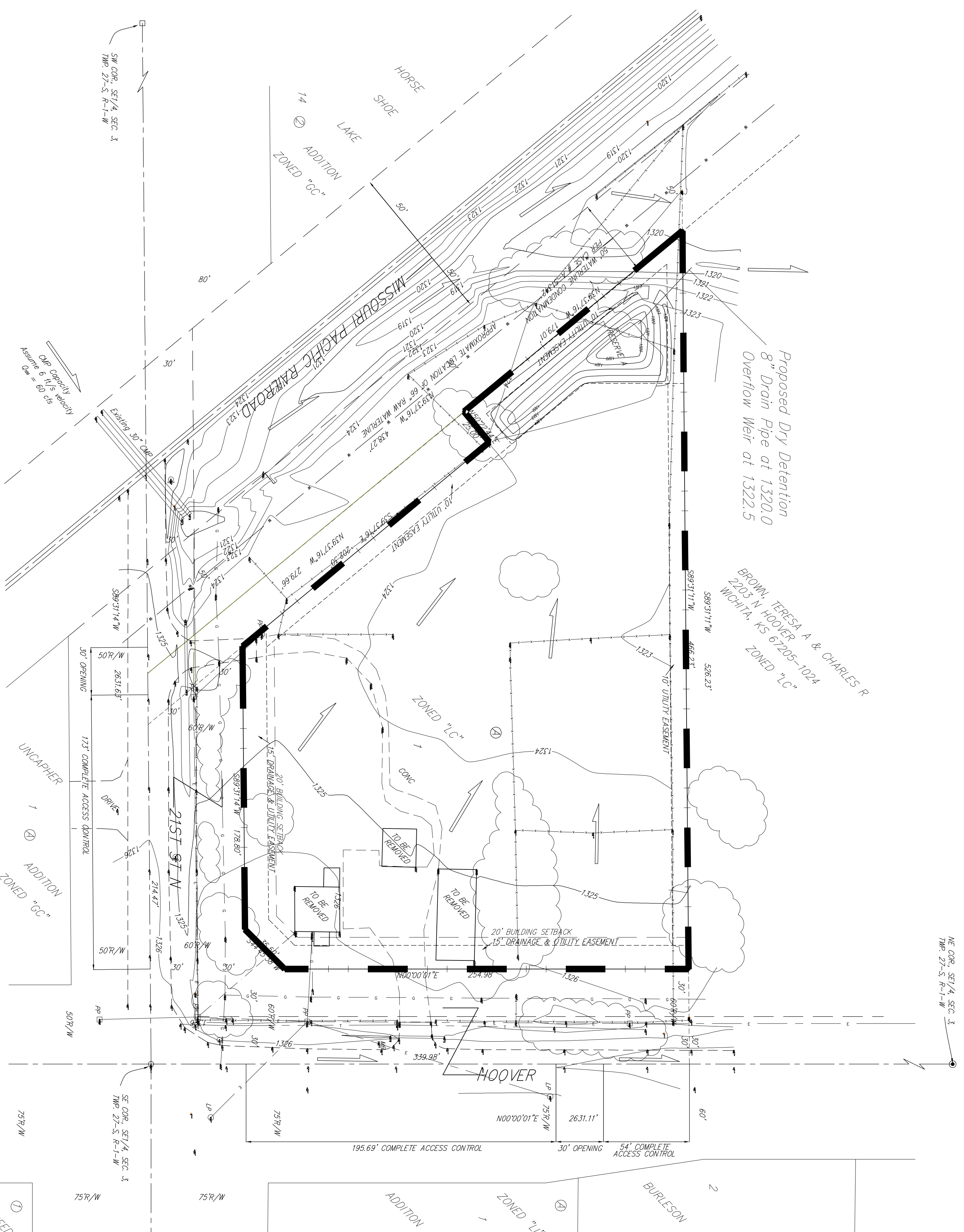


DRAINAGE PLAN SLATE CREEK

AN ADDITION TO WICHITA, SEDGWICK COUNTY, KANSAS



ME COR. SE 1/4, SEC. 3
TWP. 27-S, R-1-W

Proposed Dry Detention
8" Drain Pipe at 1320.0
Overflow Weir at 1322.5

BROWN, TERESA A & CHARLES R
2203 N. HOOPER
WICHITA, KS 67205-1024
ZONED "LC"

POND DISCHARGE SUMMARY

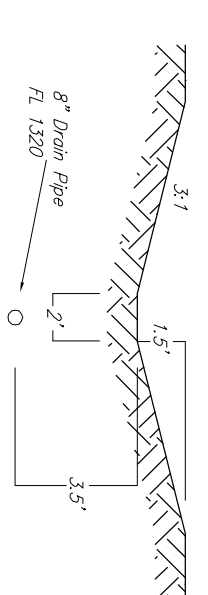
Q_2 in = 4.9 cfs	Q_2 out = 2.4 cfs
Q_3 in = 7.1 cfs	Q_3 out = 3.7 cfs
Q_{100} in = 15 cfs	Q_{100} out = 11 cfs
Elev ₁ = 1320.4	
Elev ₂ = 1322.9	
Elev ₁₀₀ = 1323.9	

DEVELOPED CONDITIONS

Area = 2.1 acres
CN = 84
$T_c = 15$ min
$Q_2 = 5$ cfs
$Q_3 = 7$ cfs
$Q_{100} = 15$ cfs

EXISTING CONDITIONS

Area = 2.1 acres
CN = 70
$T_c = 15$ min
$Q_2 = 2.4$ cfs
$Q_3 = 4.2$ cfs
$Q_{100} = 11$ cfs



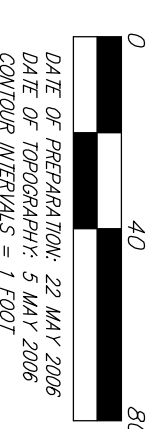
Typical Swale / Outlet

(M) = MEASURED
(P) = AS PAVED
(C-P) = CALCULATED PER
PAVED INFO.

#4 REBAR W/ BAUGHMAN CAP (SET)
#4 REBAR W/ BAUGHMAN CAP (FOUND)
#4 REBAR W/ BAUGHMAN CAP (FOUND)
#4 REBAR W/ BAUGHMAN CAP (FOUND)
#4 REBAR W/ BAUGHMAN CAP (FOUND)
#4 REBAR W/ BAUGHMAN CAP (FOUND)
#4 REBAR W/ BAUGHMAN CAP (FOUND)
#4 REBAR W/ BAUGHMAN CAP (FOUND)
#4 REBAR W/ BAUGHMAN CAP (FOUND)
#4 REBAR W/ BAUGHMAN CAP (FOUND)

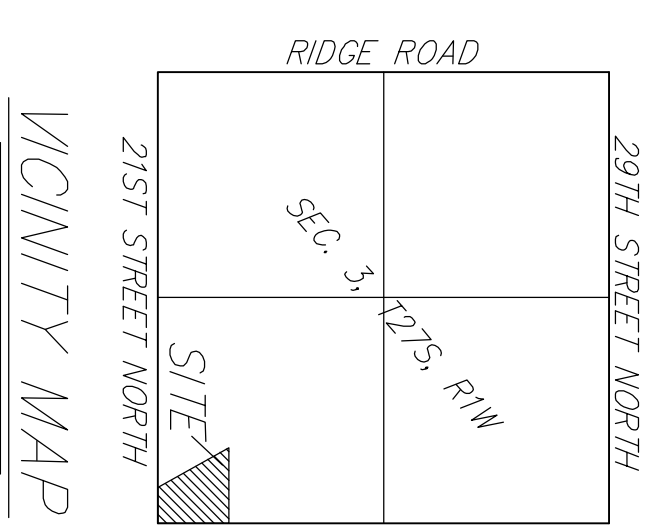
NOTE: 8" PVC Drain Pipe to include concrete headwalls at the inlet and outlet to control clogging and crushing of the pipe.

U-NEDA
SELF STORAGE
ADDITION
ZONED "LI"



DATE OF PREPARATION: 22 MAY 2006
DATE OF REVISION: 22 MAY 2006
CONTRACT NUMBER: SLATE/CR
CONTRACT AREA: 1.001

CONTRACT BIDDERS:
SLATE HOLDINGS, LLC
2200 E. 34TH ST N
SLIDE 1001
WICHITA, KS 67226
402-960-4600



VICINITY MAP

NOTE:
Under existing site for drainage has been developed for this addition and is on file with the City of Wichita, Kansas. All drainage easements, right-of-ways, or reserves shall remain at established grades or as modified with the approval of the City Engineer of the City of Wichita. No obstructions which impede the flow of this drainage system be allowed.

1" = 100'

DESIGNER:
21st Street North & Hoover St.
Elev = 1326.47 10/02/09