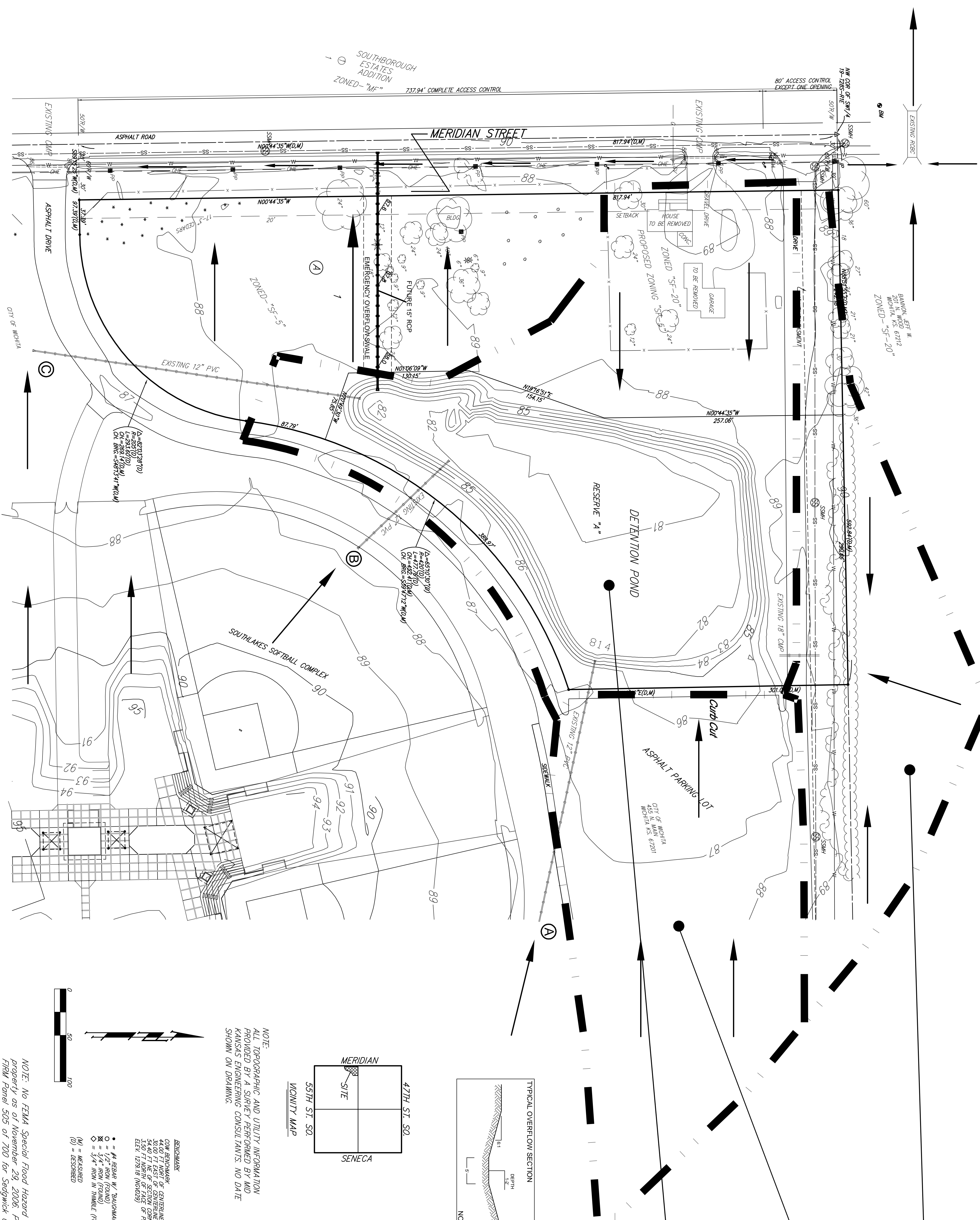


SOUTH LAKES SPORTS COMPLEX ADDITION

WICHITA, SEDGWICK COUNTY, KANSAS

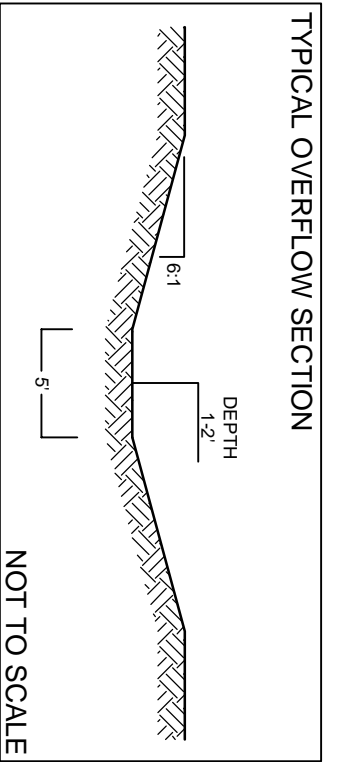
DRAINAGE PLAN



NORTH OFFSITE DRAINAGE
 Area = 2.2 acres
 Soil Type = B
 CN = 73
 Q₂ = 3.0 cfs
 Q₅ = 5.0 cfs
 Q₁₀₀ = 13 cfs

EAST PAVEMENT DRAINAGE
 Area = 2.7 acres
 Soil Type = B
 CN = 98
 Q₂ = 9.4 cfs
 Q₅ = 12 cfs
 Q₁₀₀ = 21 cfs

DEVELOPED AREA & POND
 Area = 4.5 acres
 Soil Type = B
 CN = 86
 Q₂ = 11 cfs
 Q₅ = 16 cfs
 Q₁₀₀ = 32 cfs



EXISTING 12" PVC DRAINAGE PIPES

PIPE LOCATION	LENGTH	HEAD	MAX OUTFLOW
A	700 ft	3 ft	4 cfs
B	120 ft	2.5 ft	5 cfs
C	375 ft	3.8 ft	5 cfs

ABOVE PIPE FLOWS CALCULATED PER H+H SOFTWARE. ASSUMPTIONS MADE INCLUDE PIPE SLOPE (0.5%), MANNINGS 'N' VALUE (0.10), AND NO TAILWATER CONTROL. HEAD VALUE IS VERY CONSERVATIVE AND IN SOME CASES DO NOT EXIST. PONDPACK SOFTWARE OUTPUTS ADJUSTED TO MATCH ABOVE MAXIMUM TOTAL FLOWS.

EXISTING POND (BOTTOM = 81.0)

STAGE	INFLOW	OUTFLOW	ELEVATION
2 Yr	59 cfs	0 cfs	83.1
5 Yr	39 cfs	0 cfs	83.6
100 Yr	77 cfs	0 cfs	85.4

EXISTING POND

ELEVATION	AREA (acres)
81.0	0.37
82.0	1.2
83.0	1.5
84.0	1.6
85.0	1.7
86.0	2.0

MINIMUM BUILDING AND ELEVATIONS FOR LOWEST OPENING TO THE STRUCTURES

LOT	BLOCK	ELEVATION
1 <td>A <td>1277.5</td> </td>	A <td>1277.5</td>	1277.5

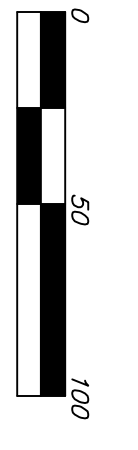
NOTE: ALL TOPOGRAPHIC AND UTILITY INFORMATION PROVIDED BY A SURVEY PERFORMED BY MID KANSAS ENGINEERING CONSULTANTS. NO DATE SHOWN ON DRAWING.

BENCHMARK
 44.00 FT NORTH OF CENTERLINE
 54.40 FT NE OF SECTION CORNER MON
 1350 FT NORTH OF FACE OF PP
 ELEV. 1275.8 (MAD25)

• = 4" REBAR W/ "BULLDOGMAN" CAP (SET)
 ○ = 1/2" IRON (ROUND)
 ⊗ = 3/4" IRON W/ THIMBLE (ROUND)
 (M) = MESSAGED
 (D) = DESCRIBED

NOTE: Existing house, garages, and gravel to be removed and replaced by a new structure and associated parking. Minimal change in impervious area is expected.

Storm Water Sewer sized for future use with improvements to Meridian Avenue. 15" RCP expected as pond outlet to Meridian curb and gutter.



NOTE: No FEMA Special Flood Hazard Area exists on this property as of November 23, 2006. Per Preliminary FEMA FIRM Panel 505 of 700 for Sedgwick County, Kansas.

SOUTH LAKES SPORTS COMPLEX ADDITION

Baughman Company, P.A.
 315 Ellis St., Wichita, KS 67211 P 316.262.7171 F 316.262.4040
 baughman.com | www.baughman.com | 1 PARKWAY | LABORERS ADMINISTRATIVE CENTER

27 NOVEMBER 2006