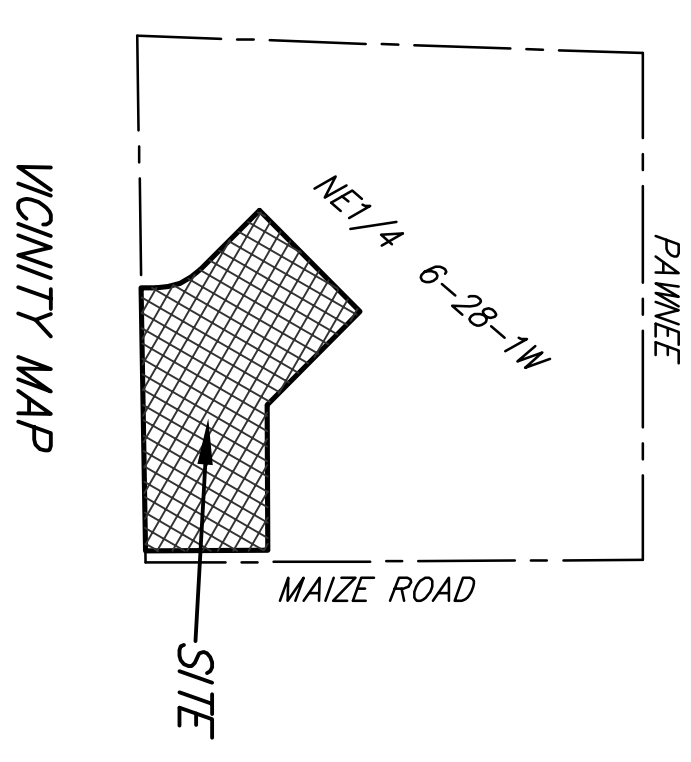
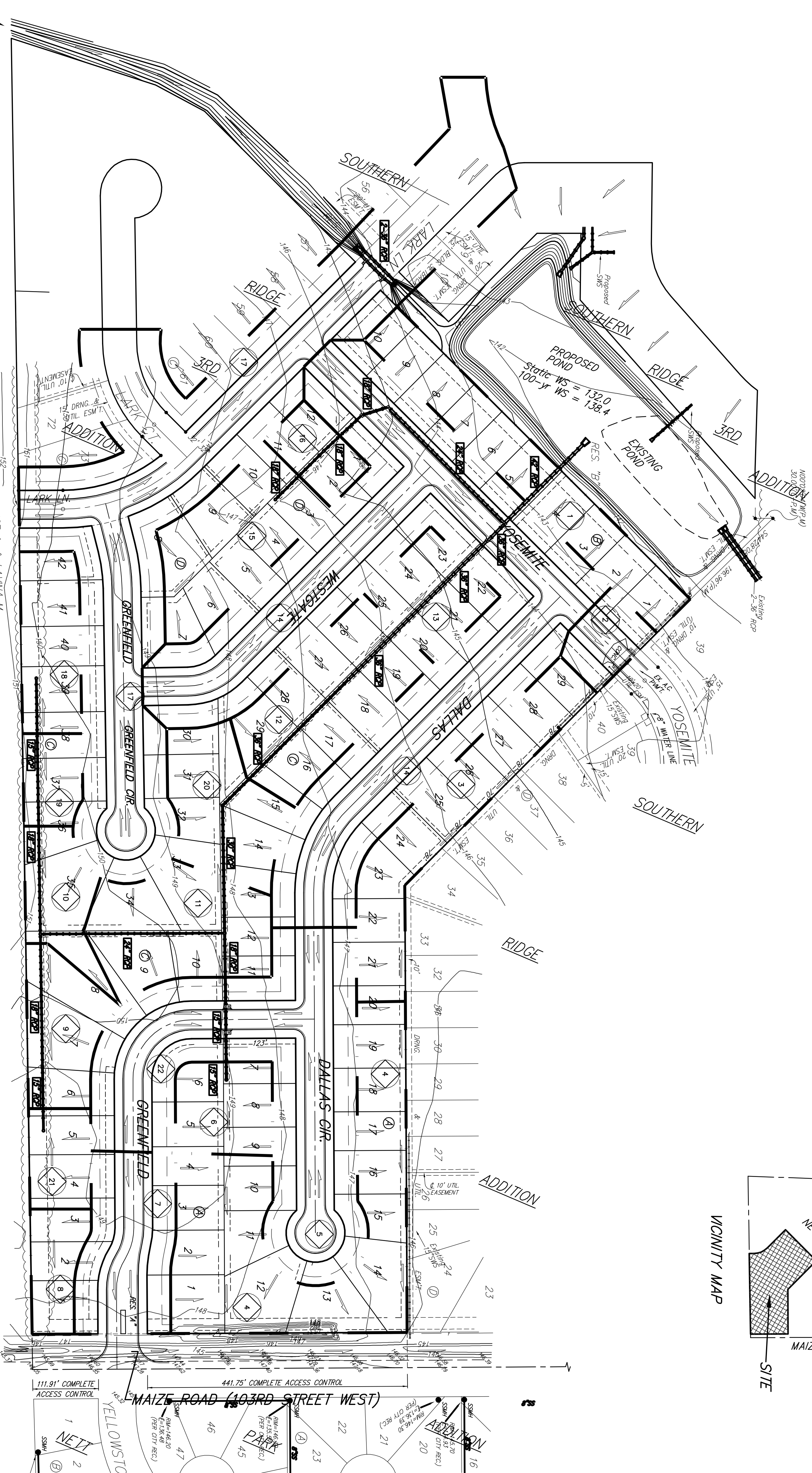


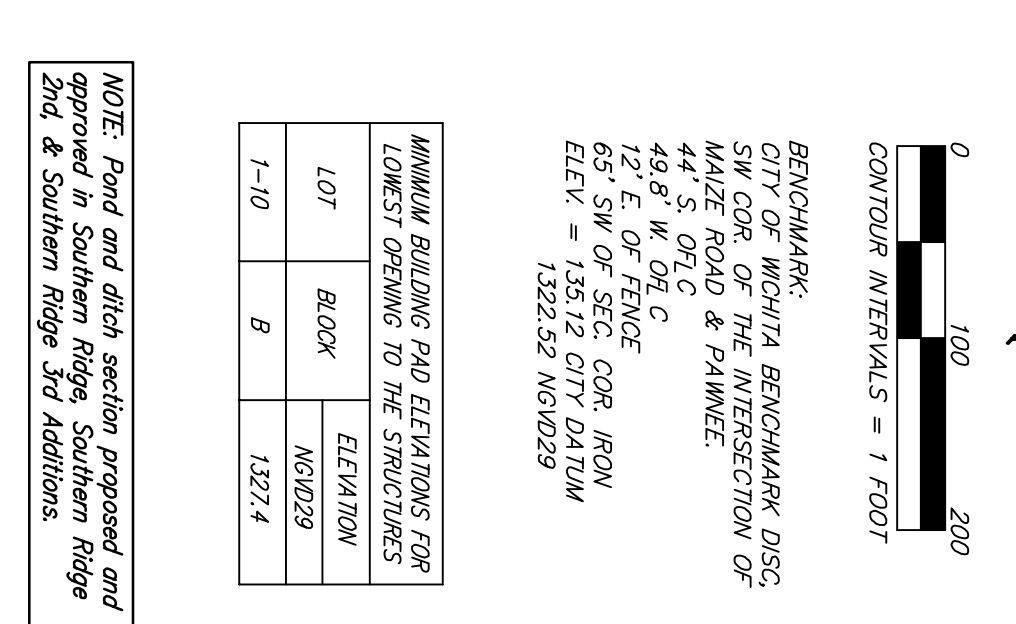
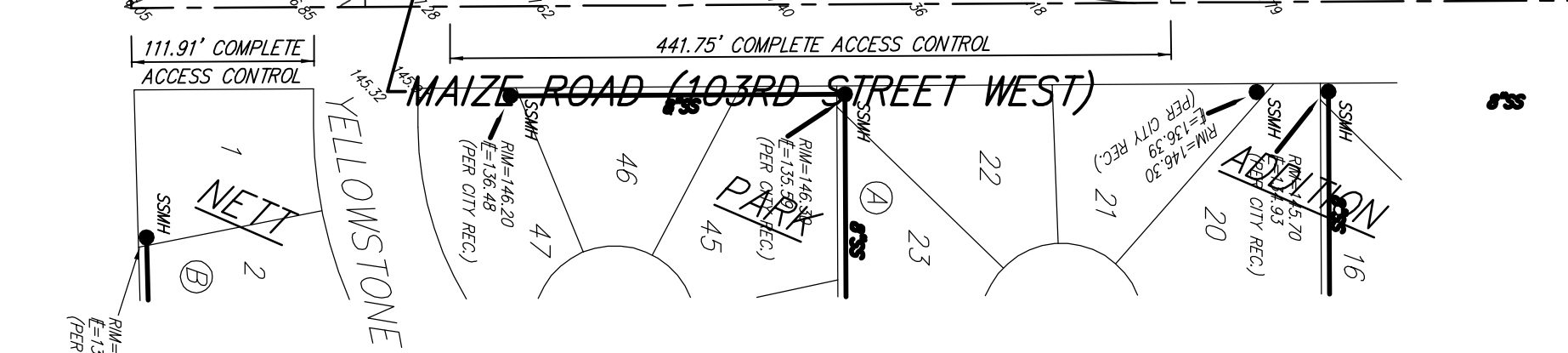
# DRAINAGE PLAN SOUTHERN RIDGE 4TH ADDITION WICHITA, SEDGWICK COUNTY, KANSAS



Basin ID	Area acres	Existing Flowrates			Developed Flowrates		
		2-yr cfs	5-yr cfs	100-yr cfs	2-yr cfs	5-yr cfs	100-yr cfs
1	1.0	1.6	2.2	4.4	1.6	2.2	4.4
2	0.4	0.6	0.9	1.8	0.6	0.9	1.8
3	1.4	2.3	3.1	6.2	2.3	3.1	6.2
4	2.5	4.0	5.5	11	4.8	6.3	13
5	1.2	1.9	2.6	5.3	2.3	3.0	6.2
6	0.6	1.0	1.3	2.7	1.1	1.5	3.1
7	1.1	1.8	2.4	4.9	2.1	2.8	5.7
8	0.4	0.6	0.9	1.8	0.8	1.0	2.1
9	0.7	1.1	1.5	3.1	1.3	1.8	3.6
10	0.6	1.0	1.3	2.7	1.1	1.5	3.1
11	1.4	2.3	3.1	6.2	2.7	3.5	7
12	1.3	2.1	2.8	5.7	2.5	3.3	6.7
13	0.6	1.0	1.3	2.7	1.1	1.5	3.1
14	6.8	11	15	30	13	17	35
15	1.2	1.9	2.6	5.3	2.3	3.0	6.2
16	0.4	0.6	0.9	1.8	0.8	1.0	2.1
17	6.0	9.7	13	27	11	15	31
18	0.7	1.1	1.5	3.1	1.3	1.8	3.6
19	0.4	0.6	0.9	1.8	0.8	1.0	2.1
20	0.8	1.3	1.8	3.5	1.5	2.0	4.1
21	0.4	0.6	0.9	1.8	0.8	1.0	2.1
22	1.5	2.4	3.3	6.6	2.9	3.8	7.7
<b>TOTAL</b>	<b>31.4</b>	<b>51</b>	<b>69</b>	<b>139</b>	<b>59</b>	<b>78</b>	<b>160</b>

Offsite Drainage  
Area = 55 acres  
Soil Type C  
Tc = 36 min  
CN = 90  
Q<sub>500</sub> = 206 cfs

SCHULTE, LAWRENCE A. & LAVINIA M.  
P.O. BOX 4  
311 PIERCE  
MAPLE HILL, KS 66507-0004



MANHOLE BUILDING PAD ELEVATIONS FOR LOWEST OPENING TO THE STRUCTURES

LOT	BLOCK	ELEVATION
1-10	B	1227.4

NOTE: Road and ditch sections proposed and shown on this plan are for informational purposes only. Final design and construction shall be in accordance with the approved final plan and specifications.