

CITY HALL - ENGINEERING  
MAIL STOP 1-71  
Arceli Rosas  
FOR YOUR FILES

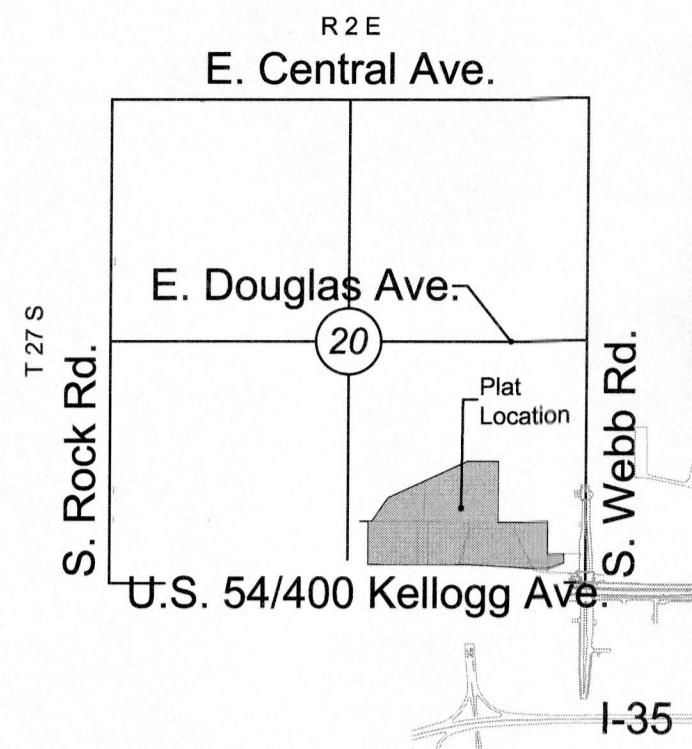
FINAL TRACING REC'D  
RECEIVED AUG 23 2024

# FINAL PLAT

## CORPORATE HILLS ADDITION

AN ADDITION TO WICHITA, SEDGWICK COUNTY, KANSAS

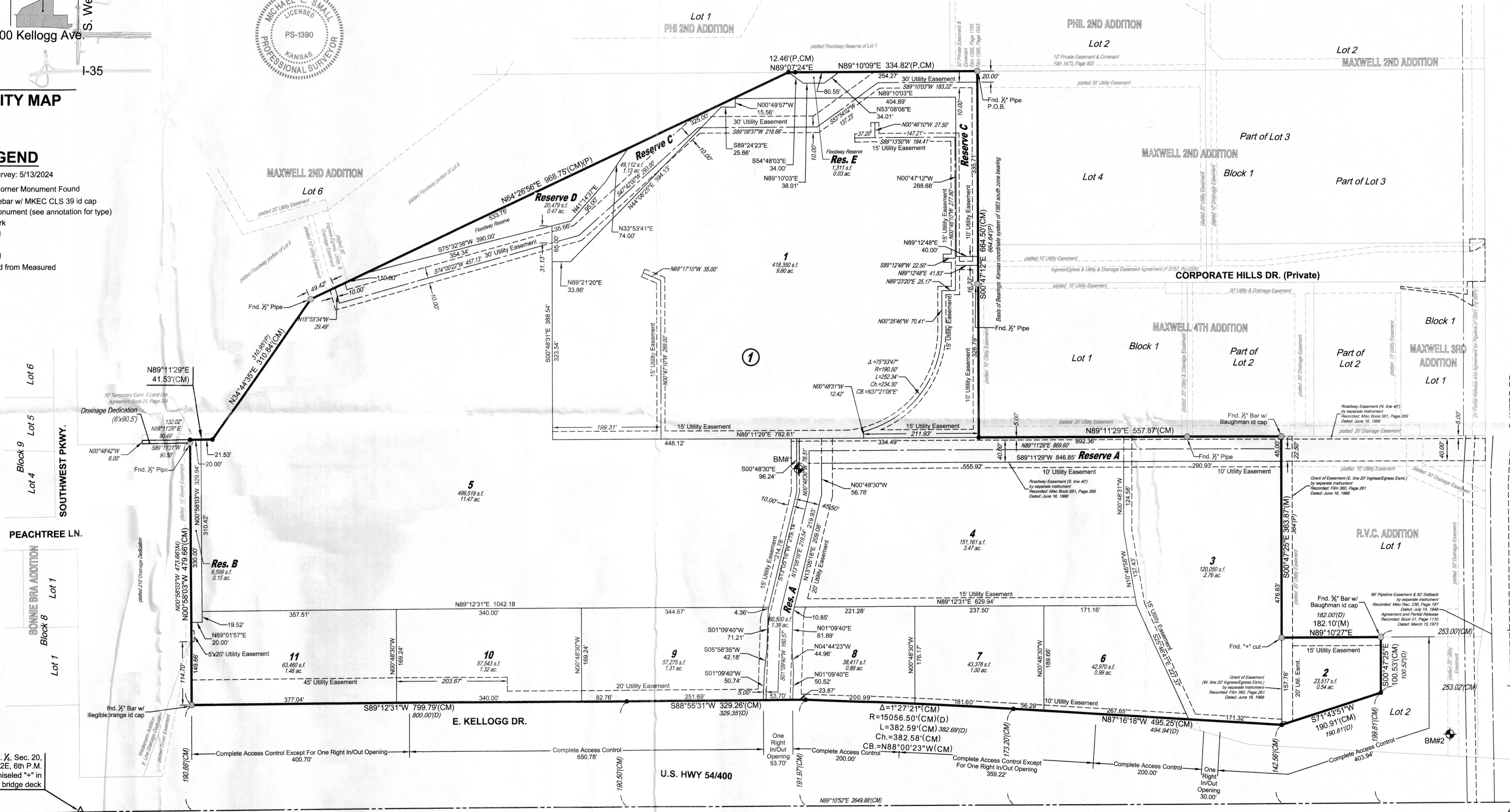
NE cor., SE 1/4, Sec. 20,  
T27S, R2E, 6th P.M.  
Fnd. 1/2" Pipe in Thimble



### VICINITY MAP

### LEGEND

- Date of Survey: 5/13/2024
- ▲ = Section Corner Monument Found
  - = Set 3/4" Rebar w/ MKEC CLS 39 id cap
  - = Found monument (see annotation for type)
  - ⊕ = Benchmark
  - (M) = Measured
  - (P) = Platted
  - (D) = Described
  - (CM) = Calculated from Measured
  - ① = Lot
  - ② = Block

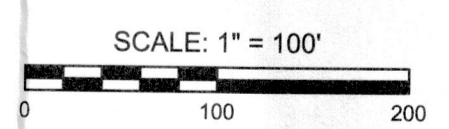


SW cor., SE 1/4, Sec. 20,  
T27S, R2E, 6th P.M.  
Fnd. Chiseled "\*" in  
bridge deck

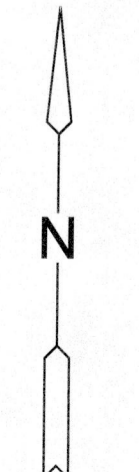
### NOTE

This plat shall comply with the recitals of Community Unit Plan (CUP) DP-15, as amended, on file at the Wichita-Sedgwick County Planning Department.

LOT(S)	BLOCK	ELEVATION
1	1	1338.0
5	1	1338.0
11	1	1337.4



Basis of Bearings: Kansas coordinate system of 1983 south zone bearing of S00°47'12"E on the east line of Lot 1, Block 1, Corporate Hills Addition, an addition to Wichita, Sedgwick County, Kansas. This plat is surveyed and platted on NAD83 using Kansas state plane south zone coordinates, modified to the surface, having a combined adjustment scale factor of 1.0001200144



### BENCHMARKS

- BM#1 Plus cut NW corner of curb inlet, approx. 1332 feet west and 590 feet north of SE Cor. Sec. 20, T27S, R2E. N: 1684352.980 E: 1679841.645 Elev: 1354.869 (NAVD88)
- BM#2 Square cut on northeast corner of concrete pad at the northwest corner of Kellogg Dr. and Webb Rd., between sidewalk and curb, approx. 120 feet north and west of SE Cor. Sec. 20, T27S, R2E. N: 1683884.422 E: 1681046.329 Elev: 1366.131 (NAVD88)

SE cor., SE 1/4, Sec. 20,  
T27S, R2E, 6th P.M.  
Fnd. Chiseled "\*" in bridge deck



