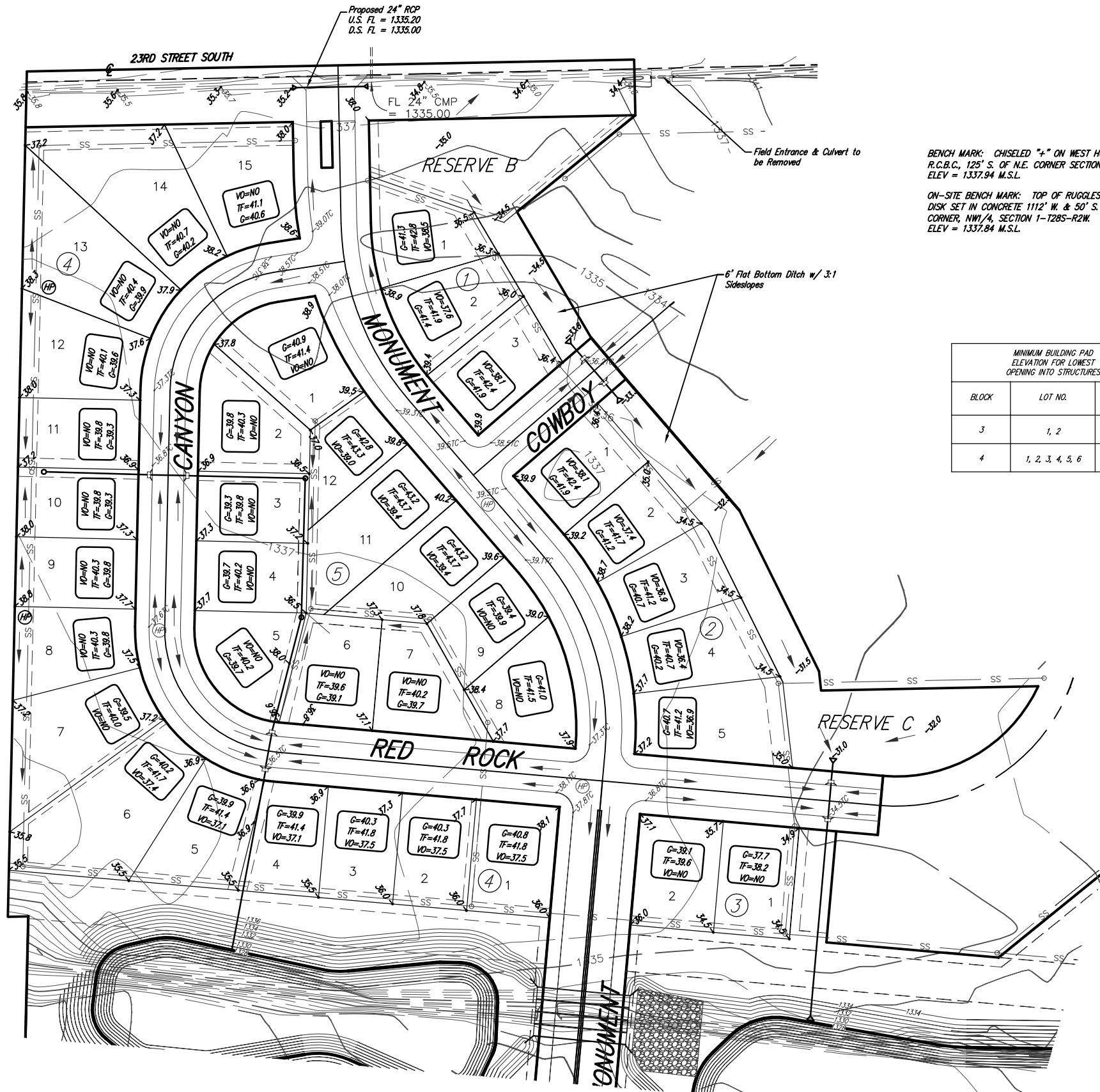


# SOUTHWEST PASSAGE ADDITION

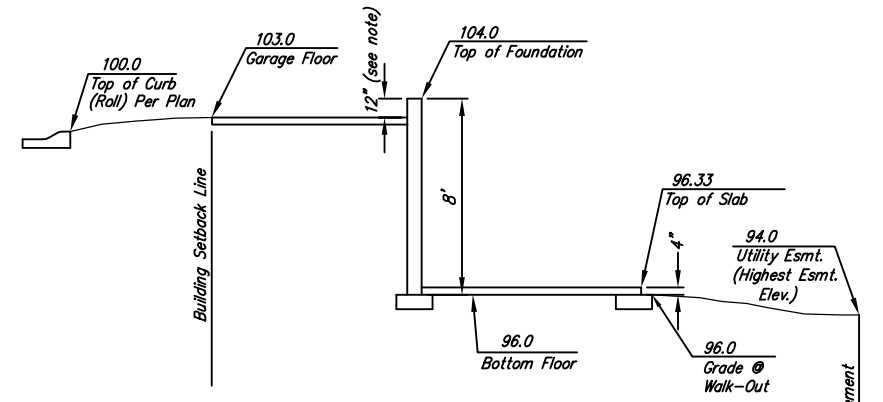
Wichita, Sedgwick County, Kansas



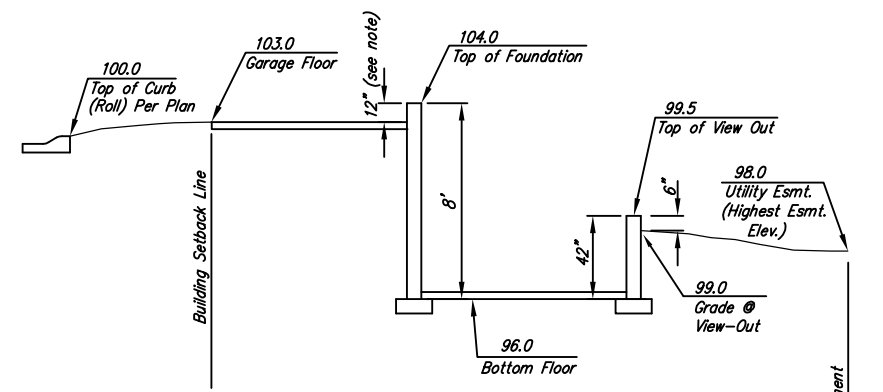
BENCH MARK: CHISELED "+" ON WEST HUBGUARD OF R.C.B.C., 125' S. OF N.E. CORNER SECTION 1-T28S-R2W. ELEV = 1337.94 M.S.L.

ON-SITE BENCH MARK: TOP OF RUGGLES & BOHM BRASS DISK SET IN CONCRETE 1112' W. & 50' S. OF THE NE CORNER, NW1/4, SECTION 1-T28S-R2W. ELEV = 1337.84 M.S.L.

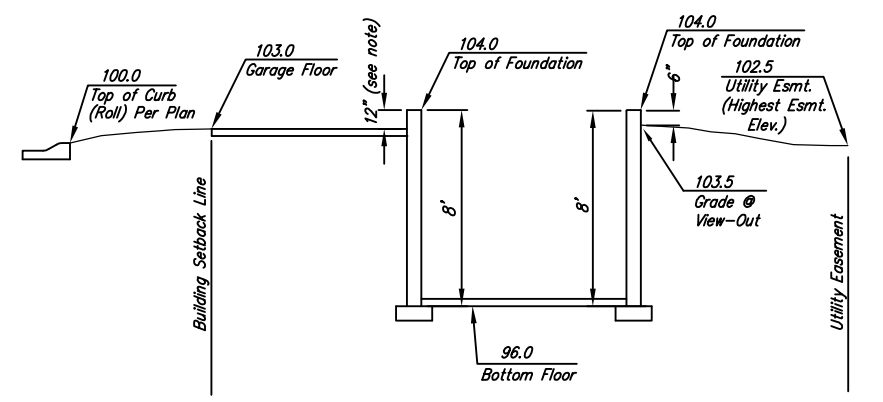
MINIMUM BUILDING PAD ELEVATION FOR LOWEST OPENING INTO STRUCTURES		
BLOCK	LOT NO.	ELEVATION (N.G.V.D.)
3	1, 2	1334.5
4	1, 2, 3, 4, 5, 6	1336.5



\* Varies (Check Individual Lot)  
**Section Through Typical Walk-Out Lot**



\* Varies (Check Individual Lot)  
**Section Through Typical View-Out Lot**



\* Varies (Check Individual Lot)  
**Section Through Typical Full Basement**



**Ruggles & Bohm, P.A.**  
Engineering, Surveying, Land Planning  
824 North Main  
Wichita, Kansas 67203  
www.rbkansas.com  
(316) 264-8008  
(316) 264-4821 fax  
E-mail: info@rbkansas.com