

# Preliminary Plat SPANGLES ADDITION

WICHITA, SEDGWICK COUNTY, KANSAS

Legal Description:

The north 100 feet of the south 275 feet of the west 160 feet of Lot 17, except the west 10 feet there, dedicated for street, Block 4, Lynncrest Heights an Addition to Wichita, Sedgwick County, Kansas.

OWNER:  
Spangles, Inc.  
437 N Hillside  
Wichita, Kansas 67214  
Ph 685-8817

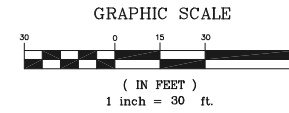
GROSS SIZE  
14999.71 Sq. Ft.  
0.34 Acres±

NET SIZE  
14999.71 Sq. Ft.  
0.34 Acres±

MINIMUM LOT SIZE  
14999.71 Sq. Ft.  
0.34 Acres±

ZONING  
LC - Limited Commercial

CONTROL NUMBER  
177727



C.A.C. = Complete Access Control

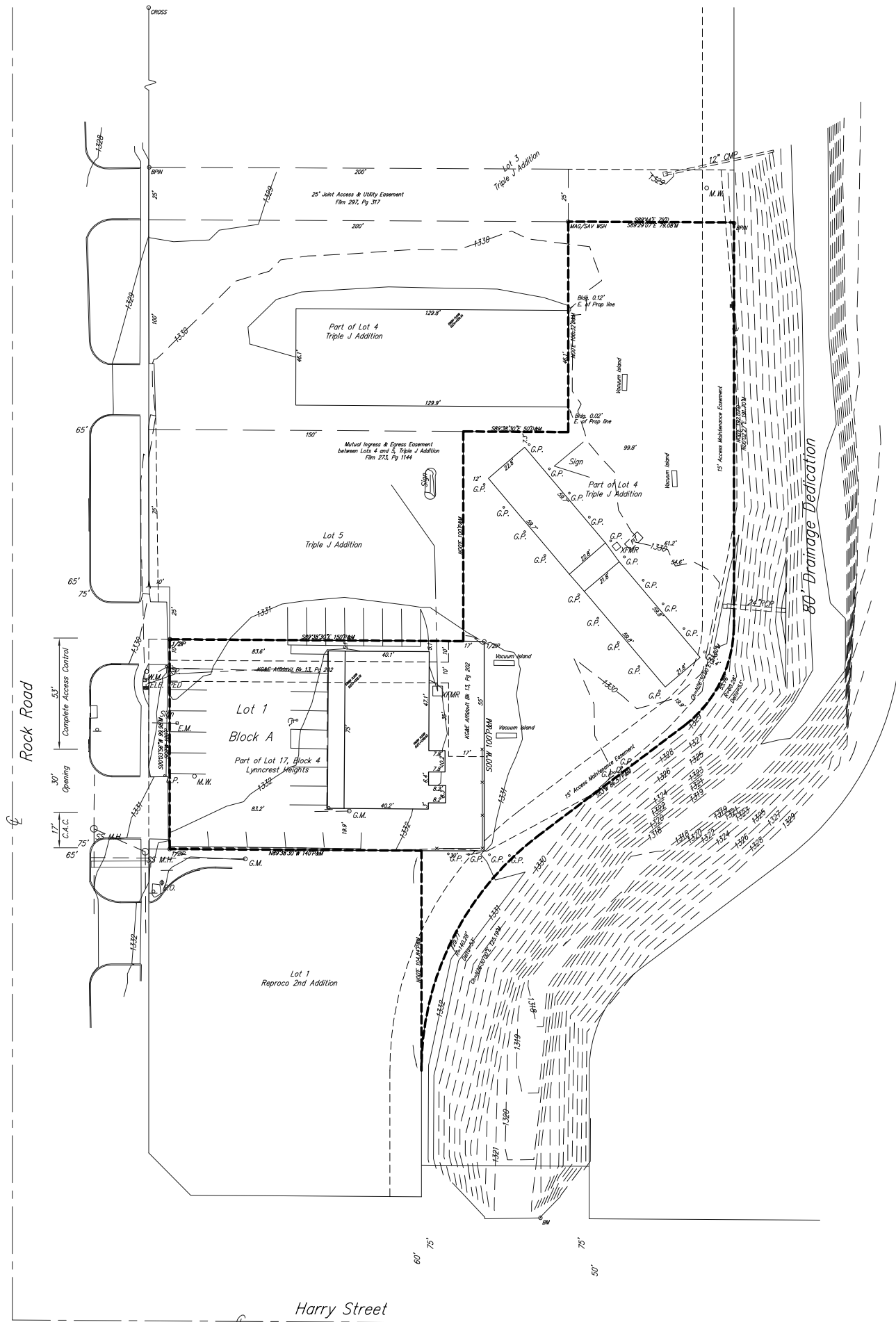
LEGEND:

P = Platted  
M = Measured

- 1/2" IP ..... 1/2" IRON PIPE (FOUND)
- BPN ..... 1/2" REBAR W/BAUGHMAN CAP (FOUND)
- SAV ..... 1/2" REBAR W/SAVOY CAP (SET)
- MAG/SAV WSH ..... MAG NAIL W/SAVOY WASHER (SET)
- CROSS ..... CHISELED CROSS (FOUND)
- VN ..... CHISELED V-NOTCH (SET)

LEGEND:

- G = GAS MAIN
- W = WATER MAIN
- SS = SANITARY SEWER
- SWS = STORM WATER SEWER
- UGE = UNDER GROUND ELECTRIC
- UGT = UNDER GROUND TELEPHONE
- TELE. PED ..... TELEPHONE PEDESTAL
- E.M. .... ELECTRIC METER
- E.O. .... ELECTRIC OUTLET
- ← ..... GUY ANCHOR
- G.M. .... GAS METER
- G.P. .... GUARD POST
- ..... HIGH LINE POLE
- M.W. .... MONITOR WELL
- ..... TELEPHONE
- ..... POWER POLE
- ..... SIGN
- W.M. .... WATER METER
- XFMR ..... ELECTRIC TRANSFORMER
- SS M.H. .... SANITARY SEWER MANHOLE



S.W. Cor. SW1/4  
Sec. 29-27S-2E

PROJECT NO. 060006341 P



Savoy Company, P.A.  
Land Surveyors

PH (316) 265-0005

FAX (316) 265-0275

535 S. Emporia, Suite 104, Wichita, KS 67202

www.savoyco.com

24 May 06