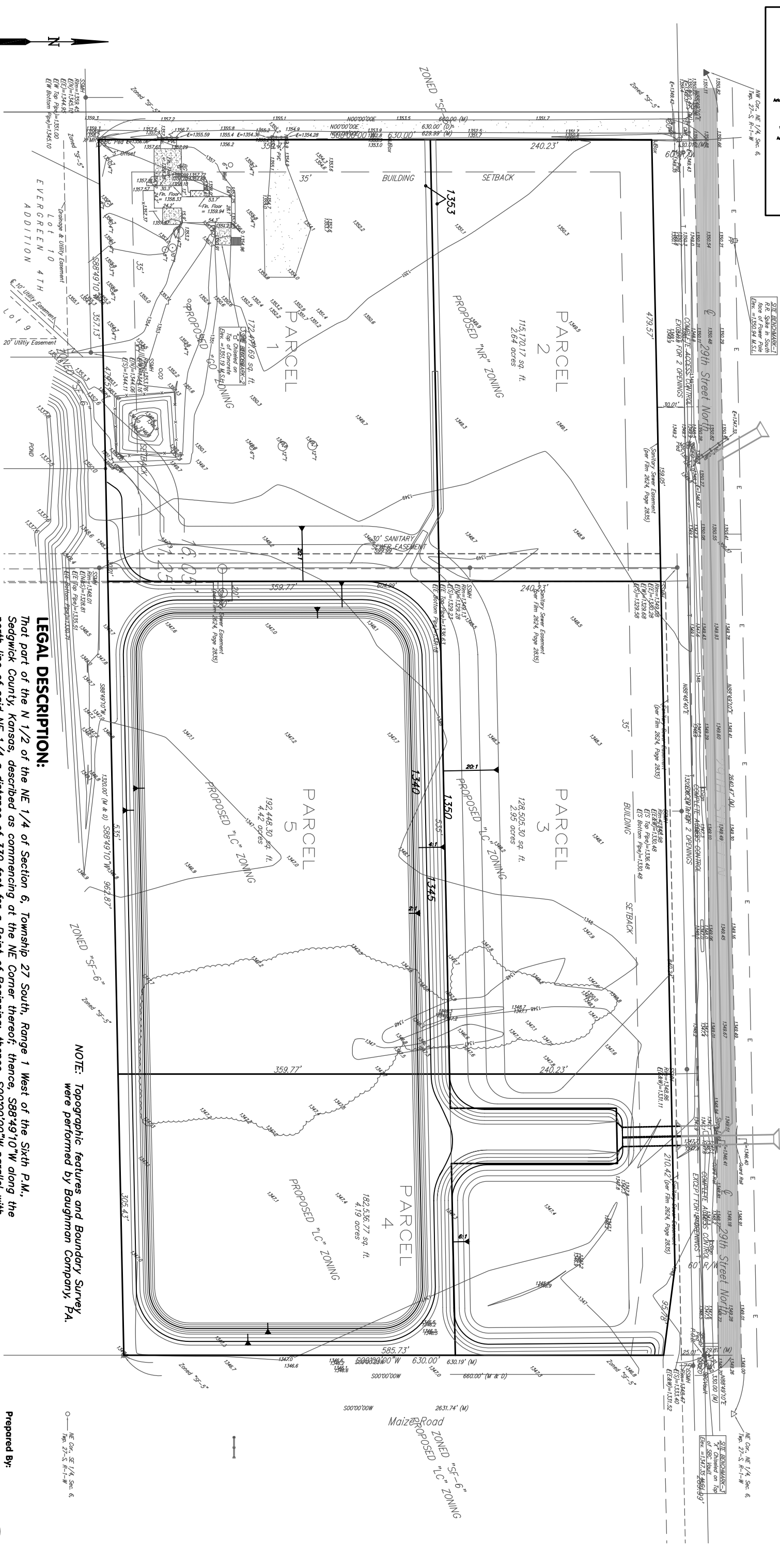


SKETCH PLAN SPENCER'S COVE WICHITA, KANSAS



LEGAL DESCRIPTION:

That part of the N 1/2 of the NE 1/4 of Section 6, Township 27 South, Range 1 West of the Sixth P.M., Sedgwick County, Kansas, described as commencing at the NE Corner thereof; thence, S88°49'10"W along the north line of said NE 1/4 a distance of 330 feet for a Point of Beginning; thence, S00°00'00"W parallel with the east line of the NE 1/4 a distance of 660.00 feet; thence, S88°49'10"W parallel with the North line of the NE 1/4 a distance of 1320.00 feet; thence N00°00'00"E parallel with the east line of the NE 1/4 a distance of 660.00 feet to a point on the north line of the NE 1/4; thence N88°49'10"E along the north line of the NE 1/4 a distance of 1320.00 feet to the Point of Beginning, subject to public right-of-ways of record.

NOTE: Topographic features and Boundary Survey were performed by Baughman Company, PA.

