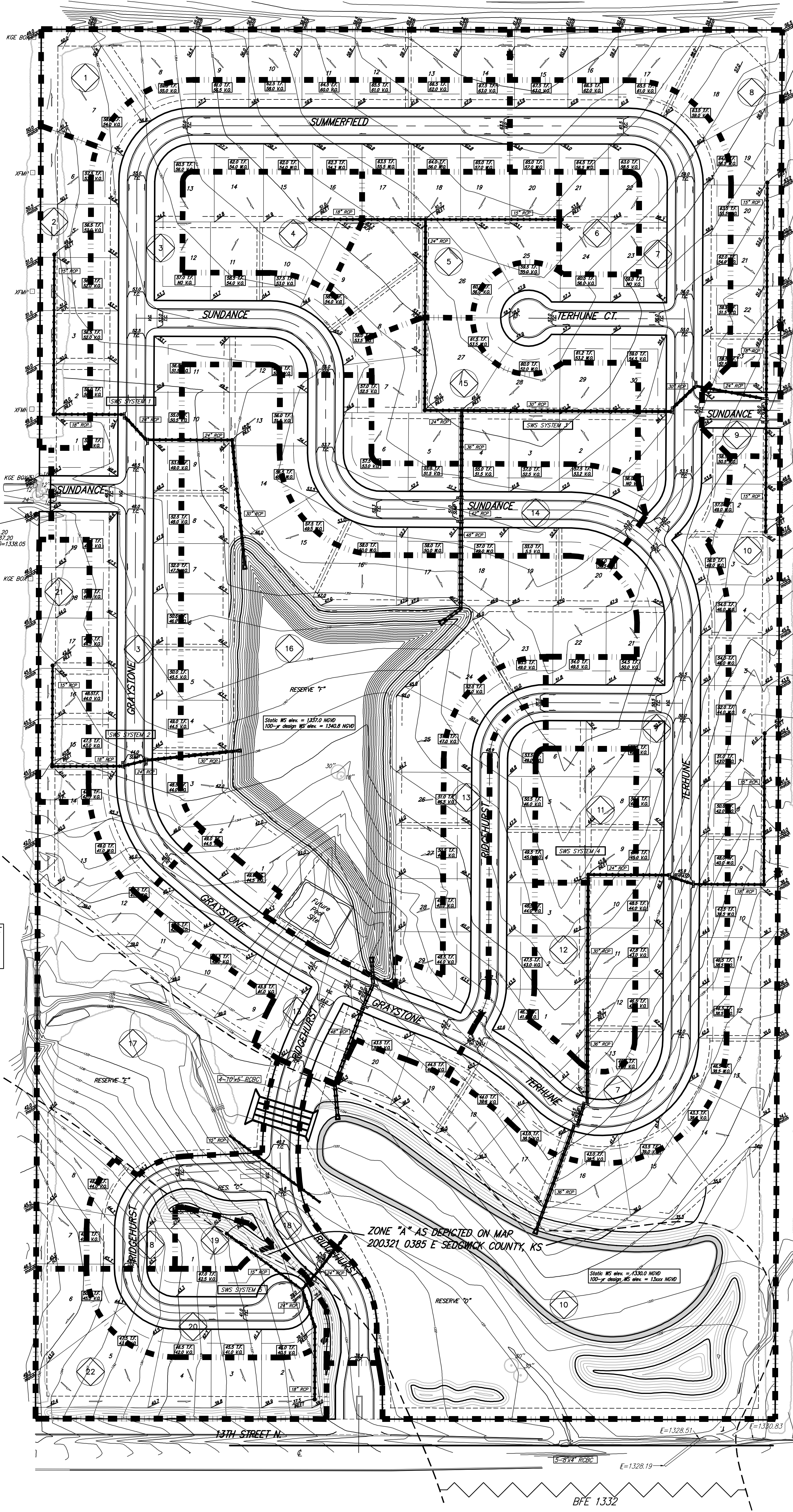


# DRAINAGE PLAN STONEBRIDGE 2ND ADDITION SEDGWICK COUNTY, KANSAS

ST. LOUIS, WICHITA, AND WESTERN RAILWAY  
(NOW BURLINGTON NORTHERN & SANTA FE RAILROAD)



OFF-SITE DRAINAGE  
D.A. = 470 acres  
Q<sub>2</sub> = 425 cfs  
Q<sub>5</sub> = 630 cfs  
Q<sub>100</sub> = 1470 cfs

Existing	2yr	5yr	100yr	Developed	2yr	5yr	100yr
Intensity	3.83	4.56	7.37	Intensity	3.83	4.56	7.37
Rational C	0.38	0.42	0.50	Rational C	0.46	0.5	0.73

Basin ID	Area acres	Existing Flowrates			Developed Flowrates		
		2-yr cfs	5-yr cfs	100-yr cfs	2-yr cfs	5-yr cfs	100-yr cfs
1	2.1	3.1	4.0	7.7	3.7	4.8	11
2	1.6	2.3	3.1	5.9	2.8	3.6	8.6
3	8.8	13	17	32	16	20	47
4	1.3	1.9	2.5	4.8	2.3	3.0	7.0
5	2.0	2.9	3.8	7.4	3.5	4.6	11
6	0.6	0.9	1.1	2.2	1.1	1.4	3.2
7	11	16	21	41	20	25	60
8	2.2	3.2	4.2	8.1	3.9	5.0	12
9	0.5	0.7	1.0	1.8	0.9	1.1	2.7
10	13	19	25	48	23	30	70
11	1.0	1.5	1.9	3.7	1.8	2.3	5.4
12	1.1	1.6	2.1	4.1	1.9	2.5	5.9
13	3.5	5.1	6.7	13	6.2	8.0	19
14	2.5	3.6	4.8	9.2	4.4	5.7	13
15	2.3	3.3	4.4	8.5	4.1	5.2	12
16	10	15	19	37	18	23	54
17	5.8	8.4	11	21	10	13	31
18	2.1	3.1	4.0	7.7	3.7	4.8	11
19	0.3	0.4	0.6	1.1	0.5	0.7	1.6
20	1.4	2.0	2.7	5.2	2.5	3.2	7.5
21	1.6	2.3	3.1	5.9	2.8	3.6	8.6
22	1.8	2.6	3.4	6.6	3.2	4.1	9.7
<b>TOTAL</b>	<b>77</b>	<b>109</b>	<b>143</b>	<b>276</b>	<b>132</b>	<b>171</b>	<b>402</b>

OFF-SITE DRAINAGE  
D.A. = 310 acres  
Q<sub>2</sub> = 330 cfs  
Q<sub>5</sub> = 500 cfs  
Q<sub>100</sub> = 1140 cfs

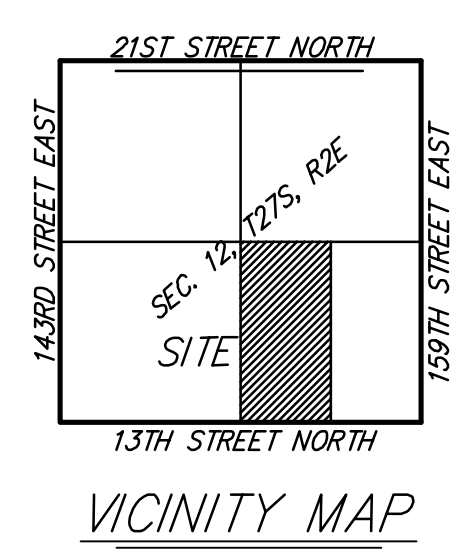
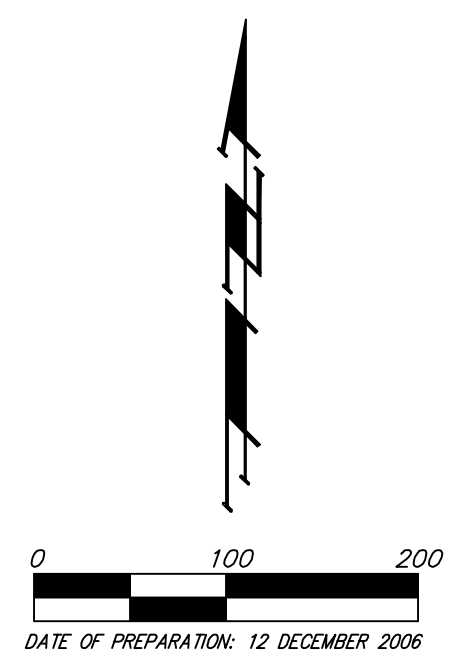
ZONE "A" AS DEPICTED ON MAP  
200321 0385 E SEDGWICK COUNTY, KS

LOT	BLOCK	ELEVATION NGVD29
1	A	1337.0
8-13	A	1339.0
1-8, 14-18	D	1344.0
23-29	D	1344.0
13-20	F	1337.0

BENCHMARK:  
"□" CUT, TOP OF CURB, S. SIDE OF SUNDANCE AS DEDICATED IN SAVANNAH AT CASTLE ROCK RANCH 7TH ADDITION, 25' W. OF THE WEST LINE OF THE SE 1/4 OF SEC. 12, TWP. 27-S, R-2-E. ELEV. = 1347.33 NGVD29  
604 NAIL IN HIGH LINE POLE, 30' SOUTH OF S1/4 CORN. SEC. 12, TWP. 27-S, R-2-E. ELEV. = 1348.58 NGVD29 (PER COUNTY RECORD)

NOTE: A DWR Permit will be needed for the box crossing. BFE's were established using HEC software and were submitted in Stonebridge Addition.

NOTE: FEMA Floodplain boundary scaled per location per FEMA FIRM 200321 0385 E, Community Panel 20173C0385E for Sedgwick County, Kansas, Effective Feb 2, 2007



12 DECEMBER 2006

**Baughman Company, P.A.**  
315 Ellis St., Wichita, KS 67211 P 316-262-7271 F 316-262-0149  
Baughman ENGINEERING | SURVEYING | PLANNING | LANDSCAPE ARCHITECTURE  
F:\HYDRO\Projects\Stonebridge2nd\STONEBRIDGE2F\_drainage.dwg