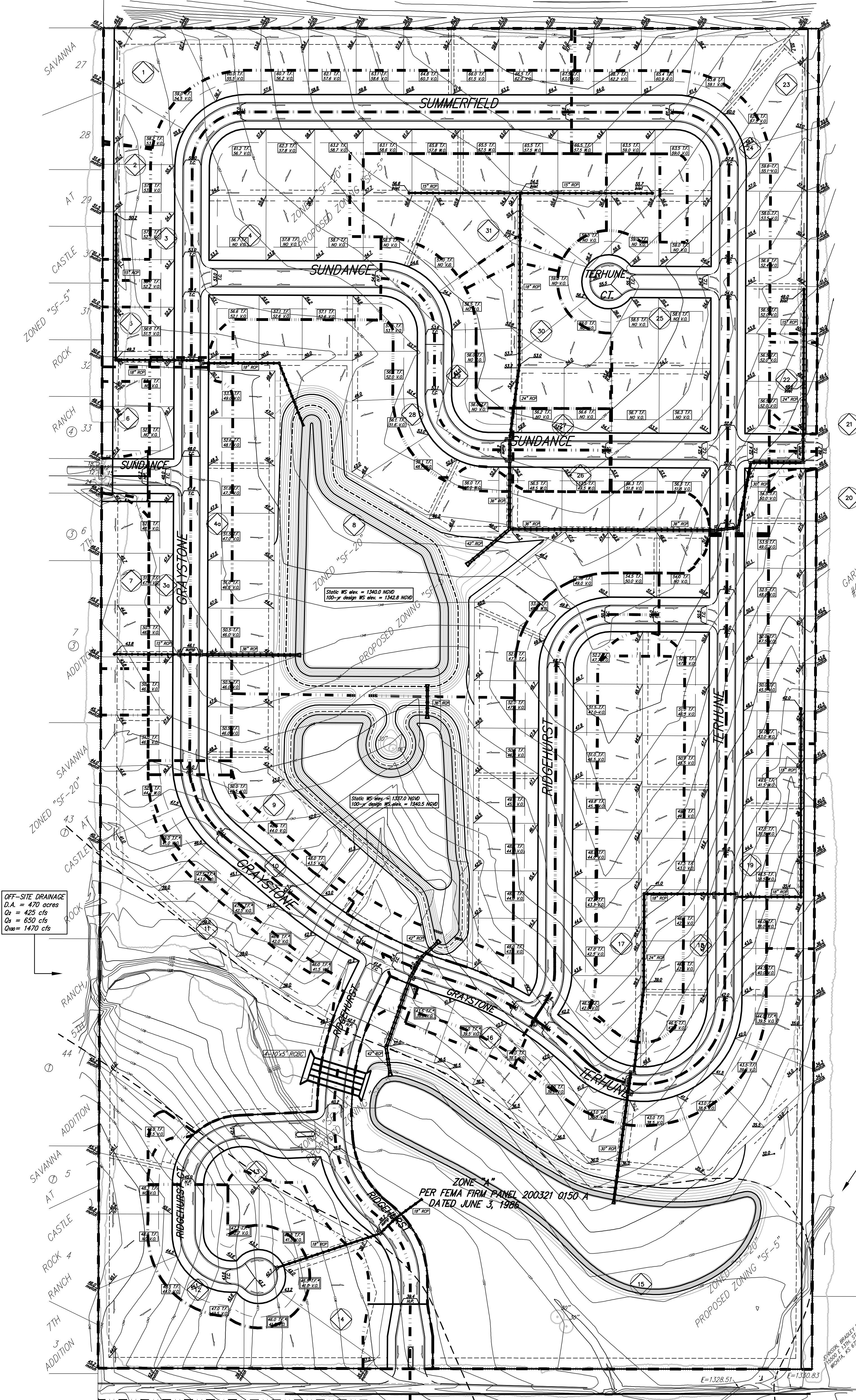


DRAINAGE PLAN STONEBRIDGE 2ND ADDITION SEDGWICK COUNTY, KANSAS

ST. LOUIS, WICHITA, AND WESTERN RAILWAY
(NOW BURLINGTON NORTHERN & SANTA FE RAILROAD)



OFF-SITE DRAINAGE
D.A. = 470 acres
Q₂ = 425 cfs
Q₅ = 630 cfs
Q₁₀₀ = 1470 cfs

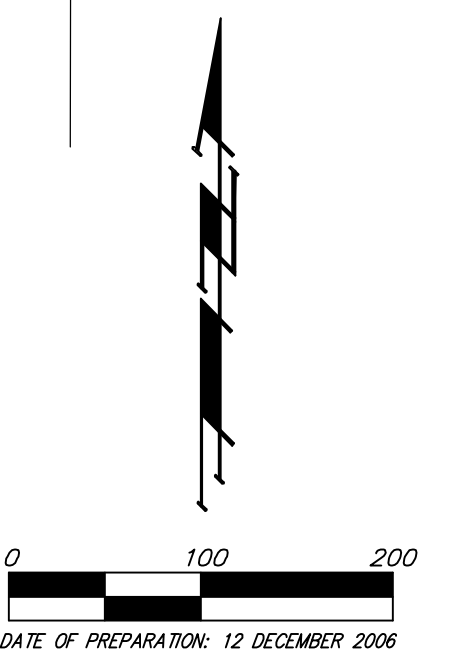
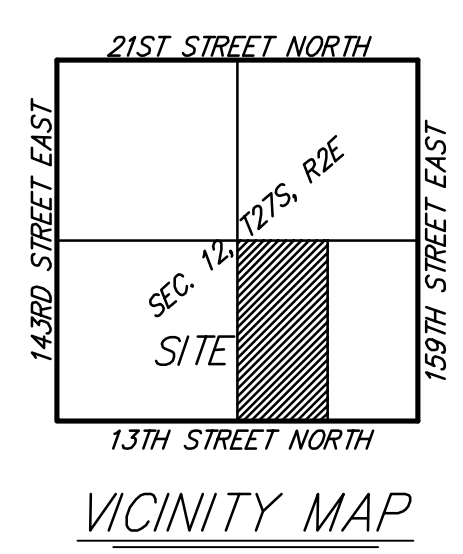
CARVEY, JEAN K.
#400 W. DOUGLASS
WICHITA, KS 67202
ZONED "SF-20"

Basin	Area acres	EXISTING			DEVELOPED		
		Q ₂ cfs	Q ₅ cfs	Q ₁₀₀ cfs	Q ₂ cfs	Q ₅ cfs	Q ₁₀₀ cfs
1	2.0	3.7	3.8	5.2	3.8	4.9	11
2	0.5	0.9	1.0	1.3	1.0	1.2	2.7
3	2.1	3.9	4.0	5.5	4.0	5.2	11
3a	1.3	2.4	2.5	3.4	2.5	3.2	7.1
4	3.5	6.4	6.7	9.1	6.7	8.6	19
4a	1.3	2.4	2.5	3.4	2.5	3.2	7.1
5	0.3	0.6	0.6	0.8	0.6	0.7	1.6
6	0.5	0.9	1.0	1.3	1.0	1.2	2.7
7	0.6	1.1	1.1	1.6	1.1	1.5	3.3
8	8.4	15	16	22	16	21	46
9	5.0	9.2	9.6	13	9.6	12	27
10	2.6	4.8	5.0	6.8	5.0	6.4	14
11	5.4	9.9	10	14	10	13	29
12	1.3	2.4	2.5	3.4	2.5	3.2	7.1
13	3.0	5.5	5.7	7.8	5.7	7.4	16
14	0.2	0.4	0.4	0.5	0.4	0.5	1.1
15	13	24	25	35	25	33	73
16	0.6	1.1	1.1	1.6	1.1	1.5	3.3
16a	0.5	0.9	1.0	1.3	1.0	1.2	2.7
17	2.6	4.8	5.0	6.8	5.0	6.4	14
18	3.8	7.0	7.3	9.9	7.3	9.4	21
19	2.5	4.6	4.8	6.5	4.8	6.2	14
20	0.1	0.2	0.2	0.3	0.2	0.2	0.5
21	0.1	0.2	0.2	0.3	0.2	0.2	0.5
22	0.3	0.6	0.6	0.8	0.6	0.7	1.6
23	2.0	3.7	3.8	5.2	3.8	4.9	11
24	1.9	3.5	3.6	4.9	3.6	4.7	10
25	3.7	6.8	7.1	9.6	7.1	9.1	20
26	0.3	0.6	0.6	0.8	0.6	0.7	1.6
27	0.3	0.6	0.6	0.8	0.6	0.7	1.6
28	0.7	1.3	1.3	1.8	1.3	1.7	3.8
29	0.8	1.5	1.5	2.1	1.5	2.0	4.4
30	1.3	2.4	2.5	3.4	2.5	3.2	7.1
31	2.4	4.4	4.6	6.3	4.6	5.9	13
TOTAL	75	138	144	196	144	185	410

OFF-SITE DRAINAGE
D.A. = 310 acres
Q₂ = 330 cfs
Q₅ = 500 cfs
Q₁₀₀ = 1140 cfs

MURFIN, NANCY TRUST
SUITE 300
250 N. WATER
WICHITA, KS 67202-1216
ZONED "SF-20"

LOT	BLOCK	ELEVATION NGVD29
1-3	A	1,337.0
9-15	A	1,339.0
1-5, 30-34	D	1,342.0
6-21, 26-29	D	1,344.0
13-20	F	1,337.0



BENCHMARK:
500 rail step Benchmark in high line pole
40 feet southwest of the Southwest
corner of Section 12, T-27-S, R-2-E.
(N.G.V.D. = 1347.03)

NOTE: FEMA Floodplain boundary scaled per location per FEMA FIRM 200321 0150.A.