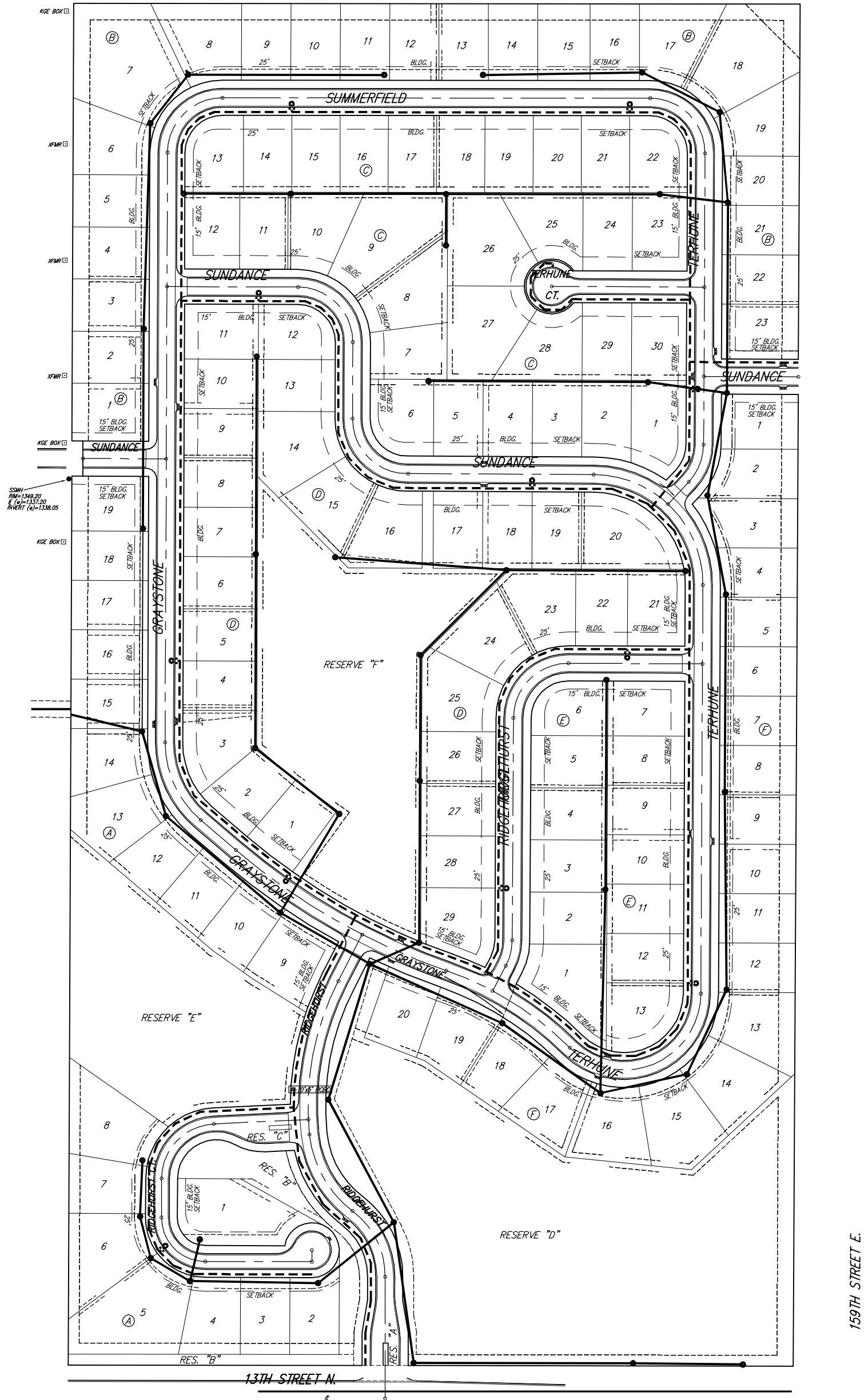
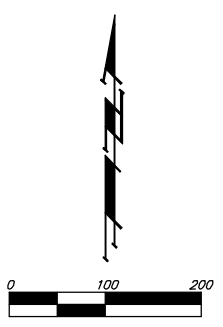


# UTILITY PLAN STONEBRIDGE 2ND ADDITION SEDGWICK COUNTY, KANSAS

ST. LOUIS, WICHITA, AND WESTERN RAILWAY  
(NOW BURLINGTON NORTHERN & SANTA FE RAILROAD)

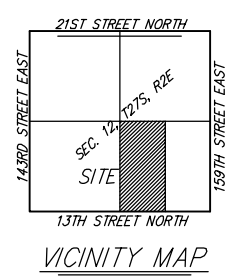


SSMH  
FORM=1348.20  
E (u)=1337.20  
INVERT (e)=1338.05



**LEGEND**

	Proposed Water Line (8" Unless Noted Otherwise)
	Existing Water Line (8" Unless Noted Otherwise)
	Proposed Sanitary Sewer Line (8" Unless Noted Otherwise)
	Existing Sanitary Sewer Line (8" Unless Noted Otherwise)
	Proposed Sanitary Sewer Manhole
	Proposed Fire Hydrant
	Proposed Sanitary Sewer Flow



**BENCHMARK:**  
600 nail step Benchmark in high line pole  
40 feet southwest of the Southeast  
corner of Section 12, T-27-S, R-2-E.  
(N.G.V.D.=1347.03)

12 DECEMBER 2006

**Baughman Company, P.A.**  
315 Ellis St. Wichita, KS 67211 P 316-262-7271 F 316-262-0149  
Baughman ENGINEERING | SURVEYING | PLANNING | LANDSCAPE ARCHITECTURE  
F:\HYDRO\Projects\Stonebridge2nd\STONEBRIDGE2F\_draingrade.dwg

159TH STREET E.