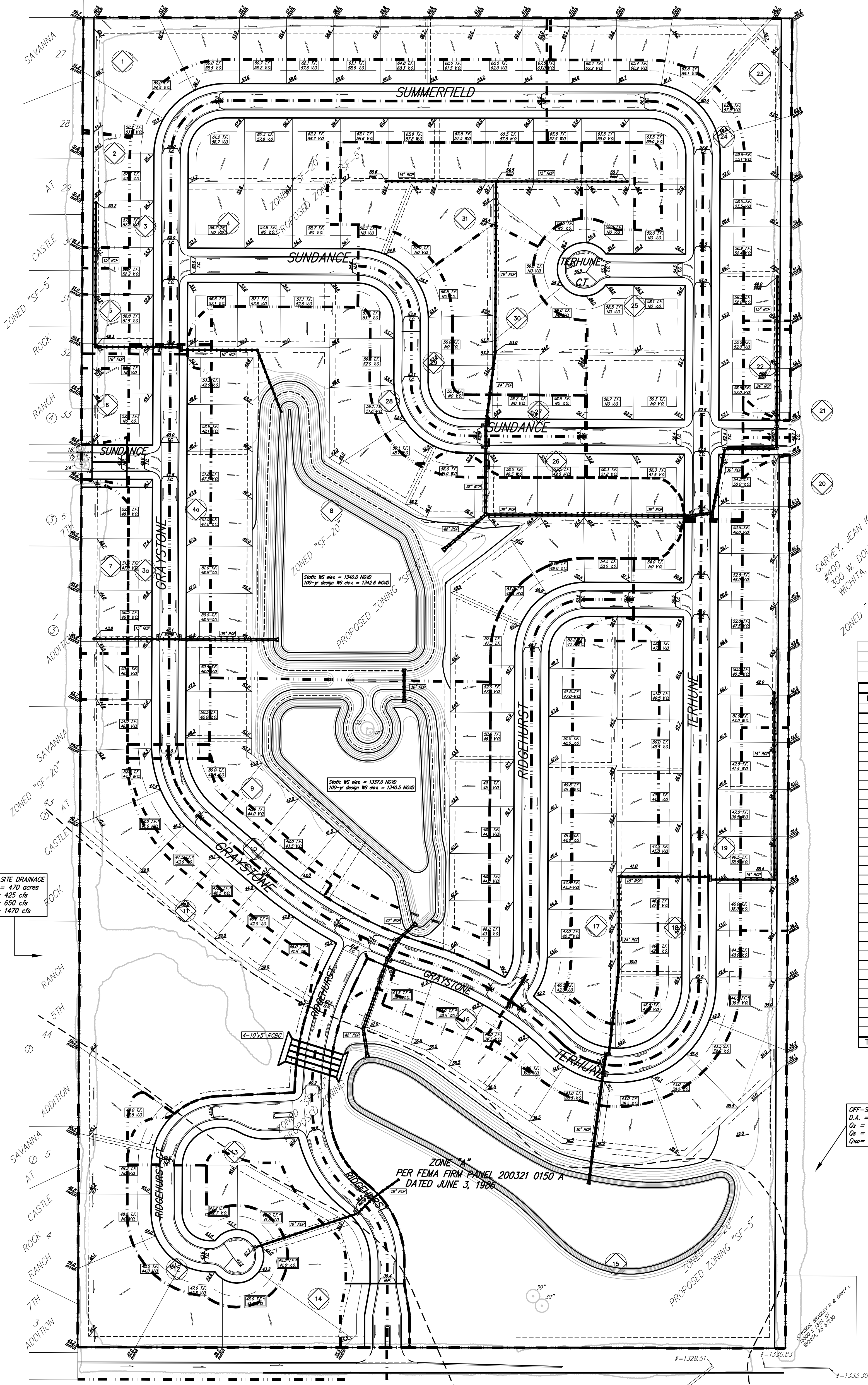


DRAINAGE PLAN STONEBRIDGE 2ND ADDITION SEDGWICK COUNTY, KANSAS

ST. LOUIS, WICHITA, AND WESTERN RAILWAY
(NOW BURLINGTON NORTHERN & SANTA FE RAILROAD)



OFF-SITE DRAINAGE
D.A. = 470 acres
Q₂ = 425 cfs
Q₅ = 630 cfs
Q₁₀₀ = 1470 cfs

EXISTING		DEVELOPED			
C2	C5	C100	C2	C5	C100
0.48	0.50	0.68	0.50	0.54	0.74

Basin	Area acres	EXISTING			DEVELOPED		
		Q2 cfs	Q5 cfs	Q100 cfs	Q2 cfs	Q5 cfs	Q100 cfs
1	2.0	3.7	3.8	5.2	3.8	4.9	11
2	0.5	0.9	1.0	1.3	1.0	1.2	2.7
3	2.1	3.9	4.0	5.5	4.0	5.2	11
3a	1.3	2.4	2.5	3.4	2.5	3.2	7.1
4	3.5	6.4	6.7	9.1	6.7	8.6	19
4a	1.3	2.4	2.5	3.4	2.5	3.2	7.1
5	0.3	0.6	0.6	0.8	0.6	0.7	1.6
6	0.5	0.9	1.0	1.3	1.0	1.2	2.7
7	0.6	1.1	1.1	1.6	1.1	1.5	3.3
8	8.4	15	16	22	16	21	46
9	5.0	9.2	9.6	13	9.6	12	27
10	2.6	4.8	5.0	6.8	5.0	6.4	14
11	5.4	9.9	10	14	10	13	29
12	1.3	2.4	2.5	3.4	2.5	3.2	7.1
13	3.0	5.5	5.7	7.8	5.7	7.4	16
14	0.2	0.4	0.4	0.5	0.4	0.5	1.1
15	13	24	25	35	25	33	73
16	0.6	1.1	1.1	1.6	1.1	1.5	3.3
16a	0.5	0.9	1.0	1.3	1.0	1.2	2.7
17	2.6	4.8	5.0	6.8	5.0	6.4	14
18	3.8	7.0	7.3	9.9	7.3	9.4	21
19	2.5	4.6	4.8	6.5	4.8	6.2	14
20	0.1	0.2	0.2	0.3	0.2	0.2	0.5
21	0.1	0.2	0.2	0.3	0.2	0.2	0.5
22	0.3	0.6	0.6	0.8	0.6	0.7	1.6
23	2.0	3.7	3.8	5.2	3.8	4.9	11
24	1.9	3.5	3.6	4.9	3.6	4.7	10
25	3.7	6.8	7.1	9.6	7.1	9.1	20
26	0.3	0.6	0.6	0.8	0.6	0.7	1.6
27	0.3	0.6	0.6	0.8	0.6	0.7	1.6
28	0.7	1.3	1.3	1.8	1.3	1.7	3.8
29	0.8	1.5	1.5	2.1	1.5	2.0	4.4
30	1.3	2.4	2.5	3.4	2.5	3.2	7.1
31	2.4	4.4	4.6	6.3	4.6	5.9	13
TOTAL	75	138	144	196	144	185	410

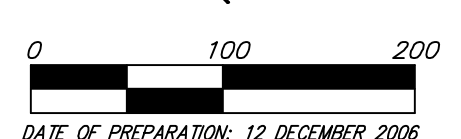
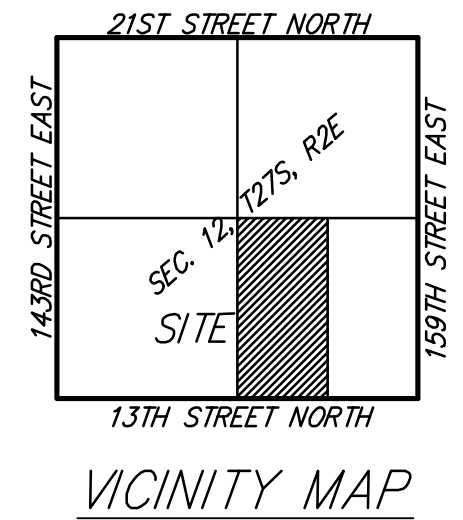
OFF-SITE DRAINAGE
D.A. = 310 acres
Q₂ = 330 cfs
Q₅ = 500 cfs
Q₁₀₀ = 1140 cfs

ZONE "A"
PER FEMA FIRM PANEL 200321 0150 A
DATED JUNE 3, 1996

MINIMUM BUILDING PAD ELEVATIONS FOR LOWEST OPENING TO THE STRUCTURES

LOT	BLOCK	ELEVATION NGVD29
1-3	A	1,337.0
9-15	A	1,339.0
1-5, 30-34	D	1,342.0
6-21, 26-29	D	1,344.0
13-20	F	1,337.0

BENCHMARK:
600 nail step Benchmark in high line pole
40 feet southwest of the Southwest
corner of Section 12, T-27-S, R-2-E.
(N.G.V.D. = 1347.03)



DATE OF PREPARATION: 12 DECEMBER 2006
CONTOUR INTERVALS = 1 FOOT

NOTE: FEMA Floodplain boundary scaled per location per FEMA FIRM 200321 0150A.

12 DECEMBER 2006

Baughman Company, P.A.
315 Ellis St. Wichita, KS 67211 P 316-262-7271 F 316-262-0149
ENGINEERING | SURVEYING | PLANNING | LANDSCAPE ARCHITECTURE