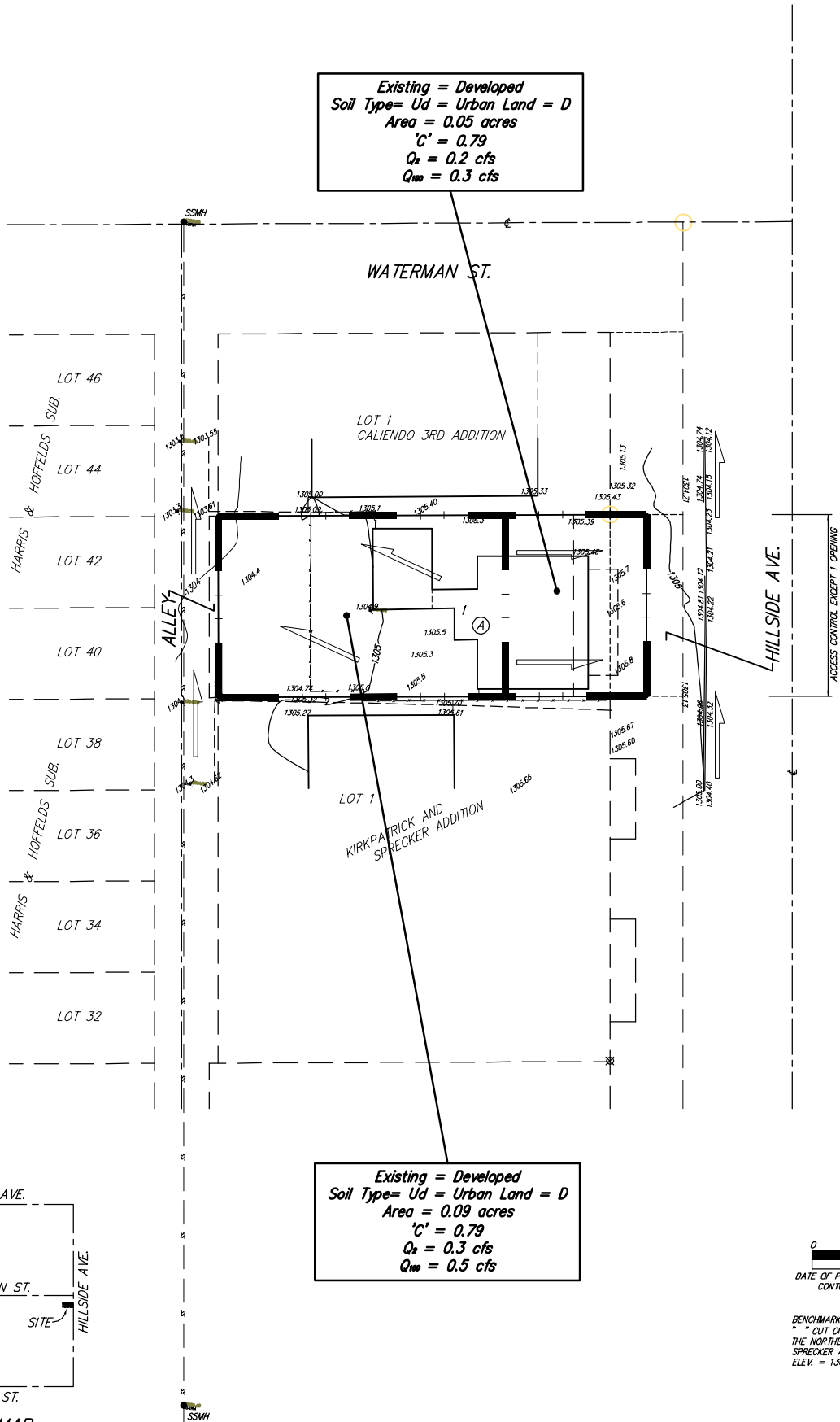


DRAINAGE PLAN

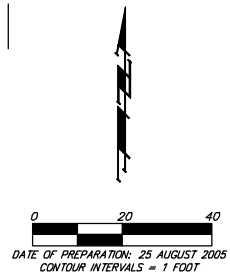
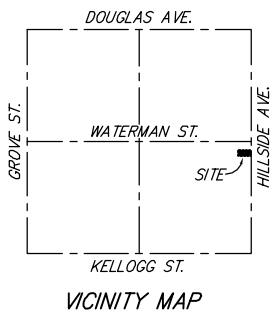
# T. & L. JOHNSON ADDITION

## WICHITA, SEDGWICK COUNTY, KANSAS

Existing = Developed  
 Soil Type= Ud = Urban Land = D  
 Area = 0.05 acres  
 $C' = 0.79$   
 $Q_2 = 0.2$  cfs  
 $Q_{100} = 0.3$  cfs



Existing = Developed  
 Soil Type= Ud = Urban Land = D  
 Area = 0.09 acres  
 $C' = 0.79$   
 $Q_2 = 0.3$  cfs  
 $Q_{100} = 0.5$  cfs



DATE OF PREPARATION: 25 AUGUST 2005  
 CONTOUR INTERVALS = 1 FOOT  
 BENCHMARK:  
 " " OUT ON FACE OF SIDEWALK, 4' E. & 5' S. OF  
 THE NORTHEAST CORNER OF KIRKPATRICK AND  
 SPRECKER ADDITION.  
 ELEV. = 1306.72 NGVD029