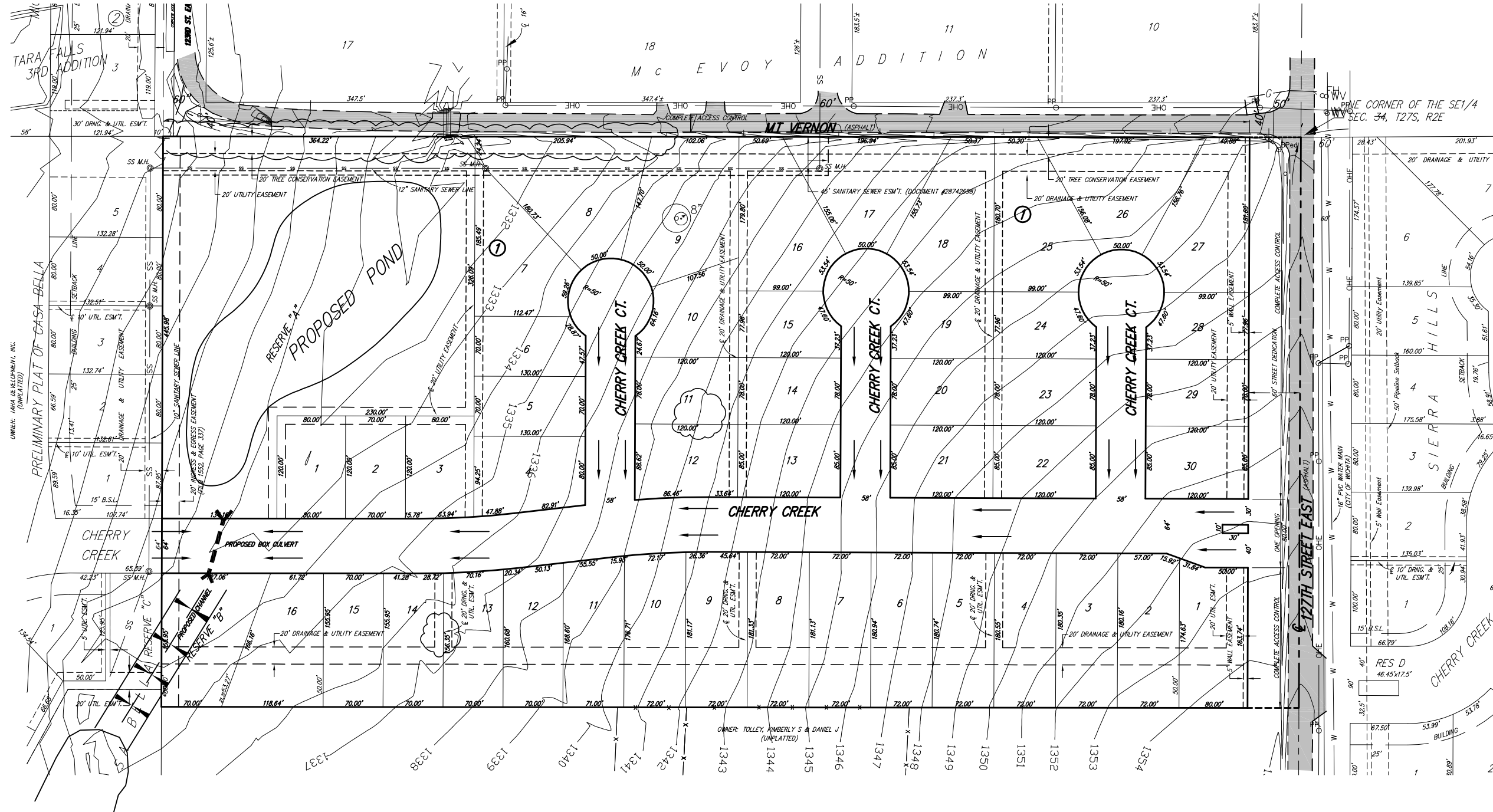


# Drainage Concept TARA CREEK

## Wichita, Sedgwick County, Kansas



- LEGEND**
- SS . . . . . SANITARY SEWER (CITY OF WICHITA)
  - OHE . . . . . OVERHEAD ELECTRIC (WESTAR)
  - T . . . . . UNDERGROUND TELEPHONE (SBC)
  - W . . . . . WATER MAIN (CITY OF WICHITA)
  - °FH . . . . . FIRE HYDRANT
  - °WV . . . . . WATER VALVE
  - ↑ . . . . . SIGN
  - BPed . . . . . TELEPHONE PEDESTAL
  - °PP . . . . . POWER POLE (WESTAR)
  - SS M.H. . . . . SANITARY SEWER MANHOLE (CITY OF WICHITA)
  - . . . . . DECIDUOUS TREE (CALIPER INDICATED)

**LEGAL DESCRIPTION:**  
The E1/2 of the N1/2 of the N1/2 of the SE1/4 of Sec. 34, T27S, R2E of the 6th P.M., Sedgwick County, Kansas.

**OWNER:**  
Eugene Vitarelli  
1822 S. Longfellow, Suite 10  
Wichita, Kansas 67207

Ph. (316) 807-6330

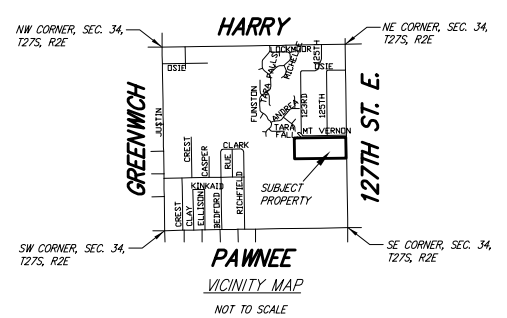
**SUBDIVIDER & ENGINEER:**  
Ruggles & Bohm, P.A.

**EXISTING ZONING:**  
Subject property and the surrounding property is zoned SF-5. Existing use is agricultural

**FLOOD ZONE:**  
According to the FEMA/FIRM Community Panel No. 200321 0225 A, effective June 3, 1986; the property shown hereon is located in Zone C

**GROSS AREA:**  
884,561.8 Sq. Ft. ±  
20.31 Acres ±

**DATE OF TOPOGRAPHY:**  
December 16, 2003



BUILDING SETBACKS PER ZONING REGULATIONS

BENCH MARK: SPR BRASS DISC 55.45' E. & 5.13' S. OF THE N.W. COR., SW1/4, SEC. 35, T27S, R2E. ELEV.=1348.35 (NGVD) = 160.95 (CITY DATUM)



**Ruggles & Bohm, P.A.**  
Engineering, Surveying, Land Planning  
824 North Main  
Wichita, Kansas 67203  
www.rbkansas.com  
(316) 264-8008  
(316) 264-4621 fax  
E-mail: info@rbkansas.com

REVISED AUGUST 24, 2006  
DWG FILE: SURVEY BASE  
PROJECT NO. 2929P  
AUGUST 1, 2006