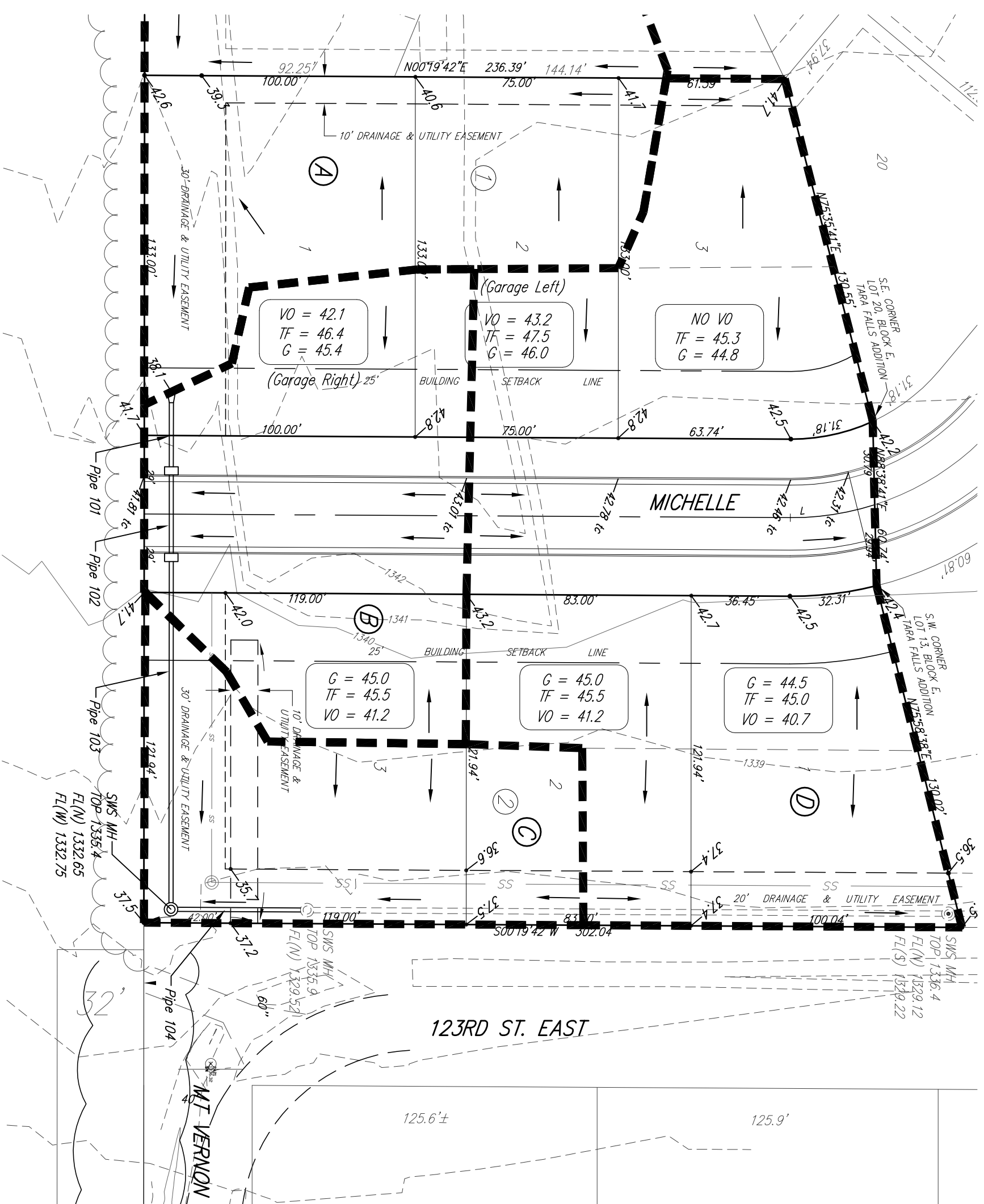


# TARA FALLS 3RD ADDITION

## Wichita, Sedgwick County, Kansas.

### GRADING AND DRAINAGE PLAN



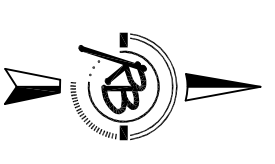
**DRAINAGE BASIN SUMMARY**

BASIN	AREA (Ac)	Tc	1/2	1/00	C <sub>1</sub>	C <sub>2</sub>	C <sub>100</sub>	Q <sub>1</sub>	Q <sub>2</sub>	Q <sub>100</sub>
A	1.02	15	3.83	7.37	0.46	0.55	0.65	1.8	5.1	5.1
B	0.40	15	3.83	7.37	0.45	0.75	0.75	0.8	2.2	2.2
C	0.34	15	3.83	7.37	0.46	0.65	0.65	0.6	1.6	1.6
D	0.75	15	3.83	7.37	0.55	0.75	0.75	1.6	4.1	4.1

Tc = 18 minutes

**PIPE SUMMARY**

Pipe	Size	Grade	Q (cfs)
101	18"	0.50%	5.1
102	18"	0.50%	6.7
103	18"	0.50%	7.3
104	18"	0.50%	8.9



1" = 20'

BENCH MARK: SBB BRASS DISC 55.49' E. & 5.13' S. OF THE N.W. COR. SW/4, SEC. 35, T27S, R2E  
ELEV.=1348.35 (NGVD) = 160.95 (CITY DATUM)

**NOTES:**

Drainage from this plot was included in detention pond and storm sewer for Tara Falls Addition. No changes are necessary to the existing storm sewer or ponds as a result of this plot.

Runoff from Area D will drain in curb and gutter to existing storm sewer in Tara Falls.

Existing utility pedestals in utility easements may require relocation or support during construction. Coordination with utility companies will be required when storm sewers and pavement is designed.