

FINAL PLAT

TOBEN FIFTH ADDITION

AN ADDITION TO WICHITA, SEDGWICK COUNTY, KANSAS

I, Gregory J. Allison, a registered Land Surveyor in Kansas, do hereby certify that I have been in responsible charge of surveying and platting of "TOBEN FIFTH ADDITION" an addition to Wichita, Sedgwick County, Kansas, into Lots, Blocks, Reserves, and Streets, the same being accurately set forth in the accompanying plat and described herein:

A replat of all of TOBEN FOURTH ADDITION, an addition to Wichita, Sedgwick County, Kansas, lying within a portion the Southeast Quarter of Section 29, Township 26 South, Range 2 East of the 6th P.M.

All reserves, streets, utility easements, drainage easement, building setbacks, access controls, together with any and all public dedications, rights-of-way, and easements within the above described property are hereby vacated and replatted by virtue of K.S.A. 12-512(b).

I hereby certify that the details of this plat are correct to the best of my knowledge and belief this ____ day of _____, 2006.

Gregory J. Allison, PE, LS #1257
MKEC Engineering Consultants, Inc.
411 North Webb Road
Wichita, Kansas 67206

Know all men by these presents that we the undersigned property owners of the land above set forth in the Registered Land Surveyor's Certificate, have caused the same to be surveyed and platted into Lots, Blocks, Reserves, and Streets the same to be known as "TOBEN FIFTH ADDITION," an addition to Wichita, Sedgwick County, Kansas. Easements for the construction and maintenance of public utilities and drainage, as indicated on the accompanying plat are hereby granted to the public. The streets are hereby dedicated to and for the use of the public. All abutters right to access to or from 41st Street North over and across the North line of "TOBEN FIFTH ADDITION," are hereby granted to the appropriate governing body, as indicated hereon. A drainage plan has been developed for this plat and all drainage easements, right-of-way, or reserves shall remain at established grades or as modified with the approval of the applicable City or County Engineer, and unobstructed to allow for the conveyance of storm water. Lots 3, 4, 5, 6, Block 1, and Lot 1, Block 2, are required to adhere to the minimum pad elevation as shown on the "Minimum Pad Elevations" table. Reserves "A" and "B" are platted for landscaping, irrigation, open space, and monuments. Additionally, Reserves "B" and "C" are platted for drainage and ponds. The Reserves shall be owned and maintained by the Lot Owners Association.

Kanza Bank, holder of a mortgage on a portion of the above described property, does hereby consent to the plat of "TOBEN FIFTH ADDITION."

KANZA BANK

_____, Vice President
James D. Ashcraft, Vice President

STATE OF KANSAS, SEDGWICK COUNTY) ss:

This instrument was acknowledged before me on ____ day of _____, 2006, by James D. Ashcraft, Vice President, Kanza Bank.

IN WITNESS WHEREOF, I have hereunto set my hand and affixed my official seal, the day and year last above written.

_____, Notary Public
My Term Expires: _____

STATE OF KANSAS, SEDGWICK COUNTY) SS:

This plat of "TOBEN FIFTH ADDITION" has been submitted to and approved by the Wichita-Sedgwick County Metropolitan Area Planning Commission, Wichita, Kansas.

Dated this ____ day of _____, 2006.

WICHITA-SEDGWICK COUNTY METROPOLITAN AREA PLANNING COMMISSION

_____, Chair
Harold Warner Jr., Chair

Attest: _____, Secretary
John L. Schlegel, Secretary

This plat of "TOBEN FIFTH ADDITION" has been submitted to and approved by the City Council of the City of Wichita, Sedgwick County, Kansas. The easements, rights-of-way and other public dedications are accepted by the City Council of the City of Wichita.

At the direction of the City Council. Dated this ____ day of _____, 2006.

_____, Mayor
Carlos Mayans, Mayor
Attest: _____, City Clerk
Karen Sublett, City Clerk

STATE OF KANSAS, SEDGWICK COUNTY) ss:

Entered on transfer record this ____ day of _____, 2006.

_____, County Clerk
Don Brace, County Clerk

This is to certify that this instrument was filed for record in the Register of Deeds office this ____ day of _____, 2006, at _____ o'clock _____, and is duly recorded.

_____, Register of Deeds
Bill Meek, Register of Deeds

Attest: _____, Deputy
Tonya E. Buckingham, Deputy

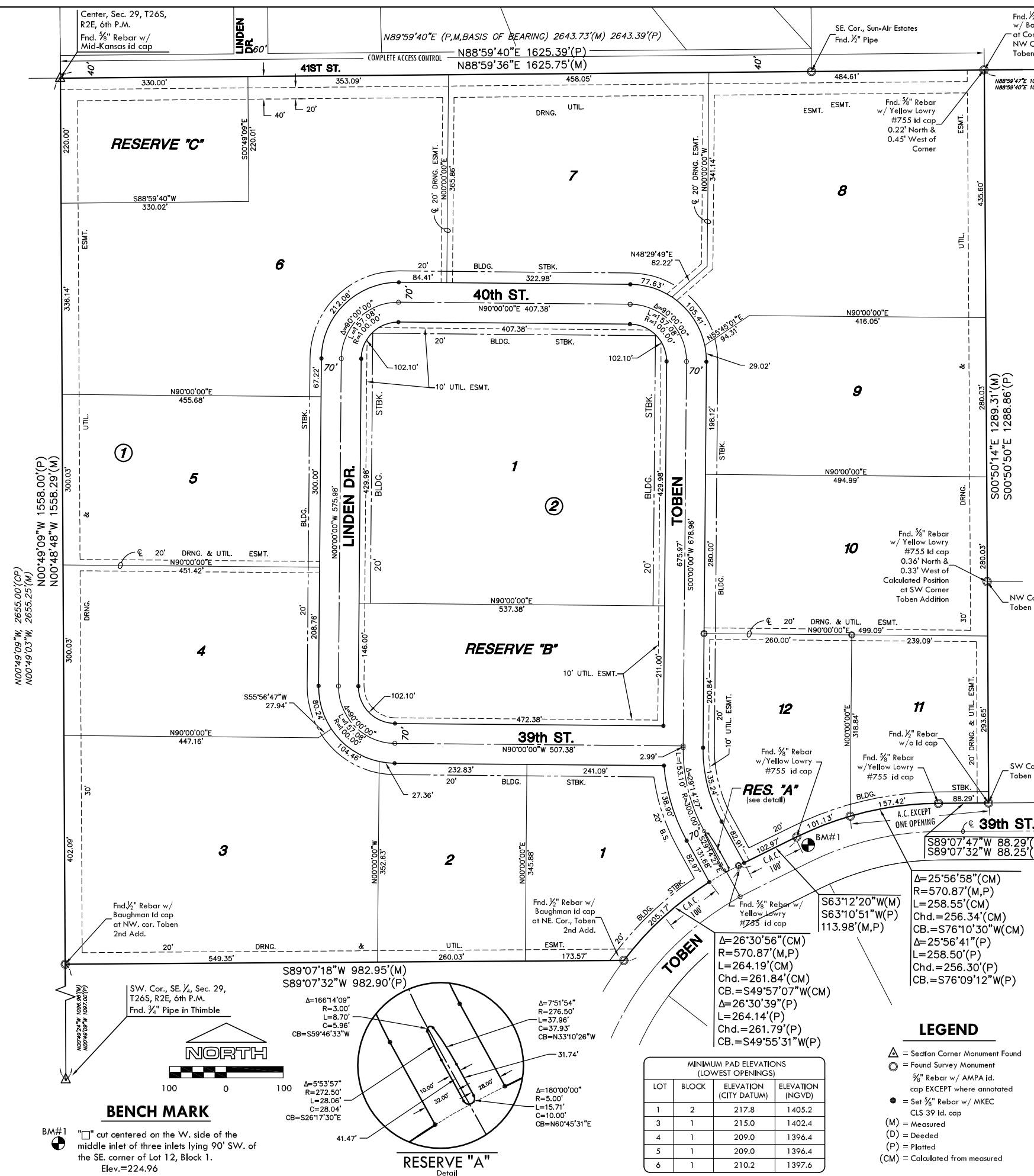
Reviewed in accordance with K.S.A. 58-2006 on this ____ day of _____, 2006.

_____, Deputy County Surveyor
Tricia L. Robello, LS #1246

_____, Deputy County Surveyor
Deputy County Surveyor
Sedgwick County, Kansas

MKEC
ENGINEERING
CONSULTANTS, INC.

411 N. WEBB ROAD
WICHITA, K.S. 67206
316-684-9600



LOT	BLOCK	ELEVATION (CITY DATUM)	ELEVATION (NGVD)
1	2	217.8	1405.2
3	1	215.0	1402.4
4	1	209.0	1396.4
5	1	209.0	1396.4
6	1	210.2	1397.6

LEGEND

- △ = Section Corner Monument Found
- = Found Survey Monument
- = 3/8" Rebar w/ AMPA id. cap EXCEPT where annotated
- = Set 3/8" Rebar w/ MKEC CLS 39 id. cap
- (M) = Measured
- (D) = Deeded
- (P) = Platted
- (CM) = Calculated from measured

First National Bank of Anthony, holder of a mortgage on a portion of the above described property, does hereby consent to the plat of "TOBEN FIFTH ADDITION."

FIRST NATIONAL BANK OF ANTHONY

_____, Vice President
Richard L. Clemmy, Vice President

STATE OF KANSAS, SEDGWICK COUNTY) ss:

This instrument was acknowledged before me on ____ day of _____, 2006, by Richard L. Clemmy, Vice President, First National Bank of Anthony.

IN WITNESS WHEREOF, I have hereunto set my hand and affixed my official seal, the day and year last above written.

_____, Notary Public
My Term Expires: _____

PLAT 12-25-33 PM CST 3/26/2006