

STORM SEWER IMPROVEMENTS INCLUDING DETENTION POND

FOR

TOWNE PARC 3rd AND 4th ADDITION

Private Project Number

CITY OF WICHITA, KANSAS
Michael E. Lindebak City Engineer

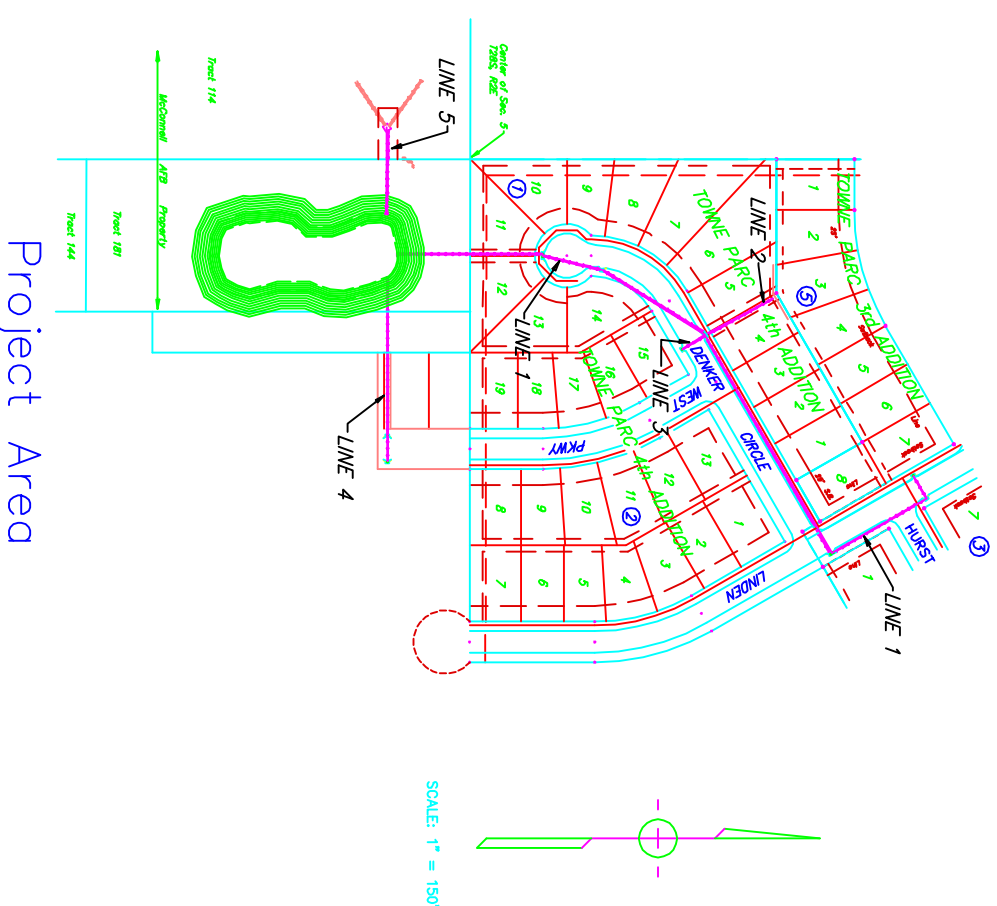
POND STAKING COORDINATES

Pt.	Northing	Easting	Pt.	Northing	Easting
10	1140.67	71.00	63	744.4	309.1
11	1140.39	223.00	64	747.1	303.1
12	1140.8	84.5	65	765.7	285.3
13	1140.6	92.5	66	750.4	245.8
14	1140.6	105.1	67	715.4	271.6
15	1140.6	107.2	68	688.4	279.5
16	1140.6	109.7	69	604.5	328.8
17	1121.0	111.6	70	599.3	313.4
18	1089.9	95.9	71	570.6	314.4
19	1082.7	106.9	72	585.2	308.1
20	1098.1	119.6	73	597.4	282.9
21	1105.1	127.6	74	611.7	287.9
22	1110.9	127.6	75	633.3	222.7
23	1118.6	133.6	76	646.8	228.2
24	1128.9	137.0	77	650.4	238.2
25	1128.9	137.0	78	704.7	233.1
26	1112.9	187.6	79	746.7	233.6
27	1101.9	189.0	80	750.8	193.2
28	1077.2	167.0	81	710.1	183.6
29	1067.4	167.0	82	701.3	180.6
30	1044.3	170.3	83	690.8	174.2
31	1016.3	180.2	84	678.6	165.4
32	1023.2	209.5	85	741.5	120.6
33	1053.4	207.3	86	746.0	134.9
34	1059.3	207.0	87	767.2	178.8
35	1063.7	207.2	88	804.1	170.7
36	1116.0	204.0	89	796.2	123.0
37	1124.9	201.0	90	794.7	108.1
38	1133.1	199.6	91	850.4	108.0
39	1139.5	213.9	92	849.9	123.1
40	1139.4	216.1	93	845.0	170.6
41	1134.0	223.3	94	869.5	182.0
42	1140.4	230.3	95	889.1	136.3
43	1132.1	238.9	96	897.2	123.7
44	1095.7	240.6	97	908.3	144.8
45	1125.1	269.8	98	906.6	129.9
46	1079.6	307.1	99	902.2	192.6
47	1061.4	257.3	100	944.5	185.3
48	1020.0	244.7	101	930.8	139.4
49	988.3	264.3	102	926.0	125.1
50	1005.8	302.7	103	964.6	112.6
51	1020.6	323.4	104	968.2	127.1
52	939.0	333.8	105	979.3	173.1
53	938.3	318.5	106	1002.8	171.8
54	937.1	276.4	107	1005.1	136.1
55	892.6	267.5	108	1006.7	107.3
56	884.6	309.3	109	1046.7	102.9
57	880.6	328.6	110	1048.2	116.5
58	851.9	307.0	111	1048.8	130.0
59	796.1	272.6	112	1049.8	140.8
60	793.1	315.2	113	1078.5	139.1
61					
62	797.8	320.6			

General Notes

The Contractor shall be responsible for preserving property irons. The Contractor will be required to re-establish any property irons which are damaged or destroyed by his construction operations. Such irons shall be re-established by a licensed land surveyor in accordance with state laws.

Bench Mark:
"□" Cut Top of Curb 68± W. of 1/4
Section Line, S. side of Hurst.
Elev. = 211.22 City Datum



Sheet Index

1. TITLE SHEET
- 2-3. LINE 1
4. LINE 1, LINE 2 & LINE 3
5. LINE 4, LINE 5
6. DETENTION POND
- 7-8. TYPE 1A INLET DETAILS
9. DROP INLET DETAILS

APPROVED AS NOTED
BY CITY ENGINEER OF WICHITA

Sanitary Sewers _____
Storm Sewers _____
Driveway Approaches _____
Water Mains _____
Paving _____

NOTE TO CONTRACTORS

Inspection and testing for this project is to be provided by a Licensed Consulting Engineering Firm under contract with the Owner/Developer. Said inspection to be in accordance with the City of Wichita standard construction engineering practices and certified by a Licensed Professional Engineer. No work shall be performed in dedicated easements or public right-of-way by the Contractor without such inspection nor shall any work be commenced without written authorization by the City Engineer.

Project Area