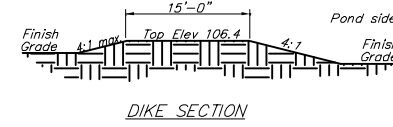
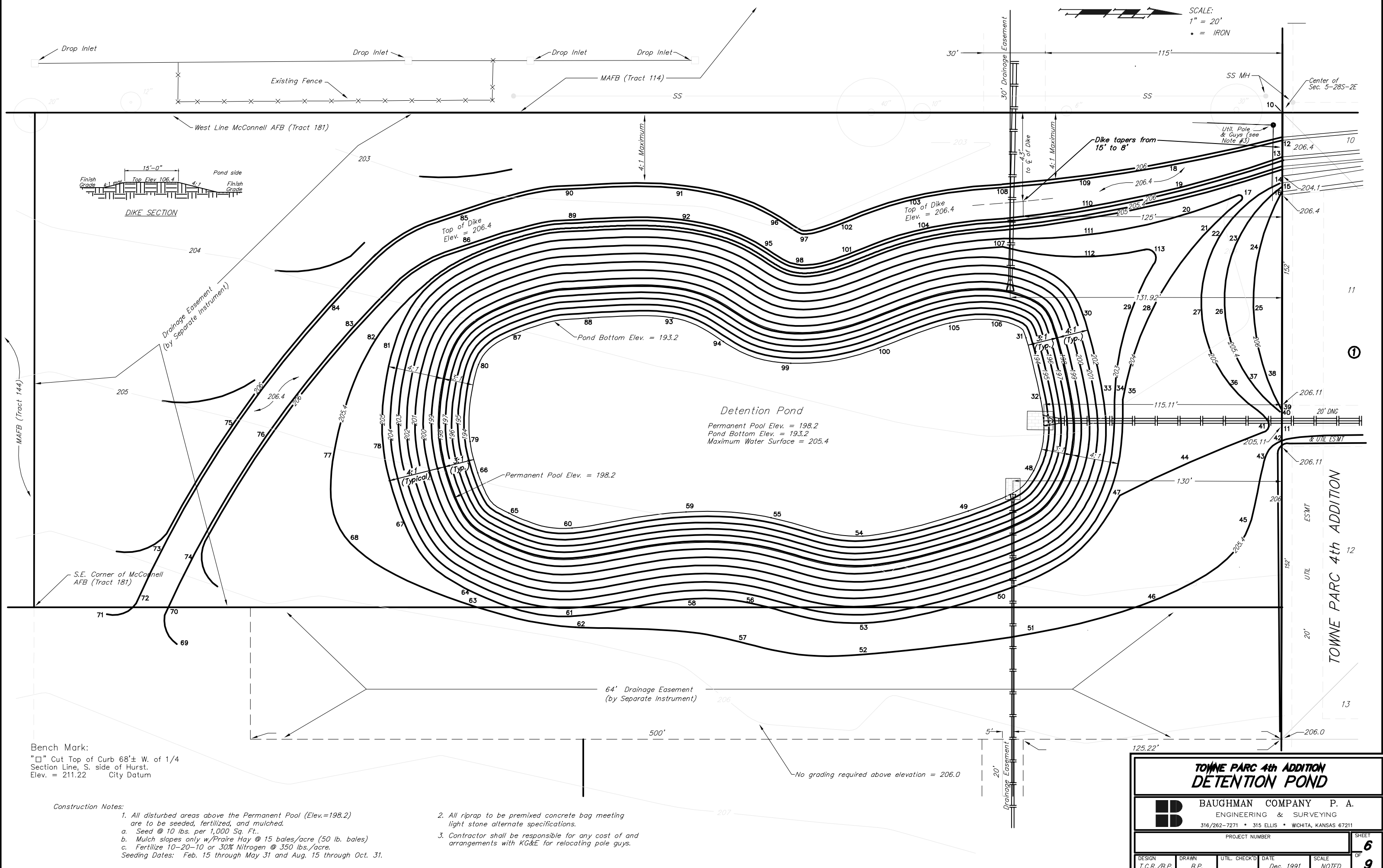


SCALE:
1" = 20'
• = IRON



Detention Pond
Permanent Pool Elev. = 198.2
Pond Bottom Elev. = 193.2
Maximum Water Surface = 205.4

Top of Dike Elev. = 206.4

Top of Dike Elev. = 206.4

Permanent Pool Elev. = 198.2

Pond Bottom Elev. = 193.2

Bench Mark:
"□" Cut Top of Curb 68'± W. of 1/4 Section Line, S. side of Hurst.
Elev. = 211.22 City Datum

Construction Notes:

- All disturbed areas above the Permanent Pool (Elev.=198.2) are to be seeded, fertilized, and mulched.
 - Seed @ 10 lbs. per 1,000 Sq. Ft.
 - Mulch slopes only w/Prairie Hay @ 15 bales/acre (50 lb. bales)
 - Fertilize 10-20-10 or 30% Nitrogen @ 350 lbs./acre.
 Seeding Dates: Feb. 15 through May 31 and Aug. 15 through Oct. 31.
- All riprap to be premixed concrete bag meeting light stone alternate specifications.
- Contractor shall be responsible for any cost of and arrangements with KG&E for relocating pole guys.

TOWNE PARC 4th ADDITION DETENTION POND			
BAUGHMAN COMPANY P. A. ENGINEERING & SURVEYING 316/262-7271 • 315 ELLIS • WICHITA, KANSAS 67211			
PROJECT NUMBER			SHEET
			6
DESIGN	DRAWN	UTIL. CHECK'D	DATE
T.C.R./B.P.	B.P.		Dec. 1991
SCALE		NOTED	
		9	