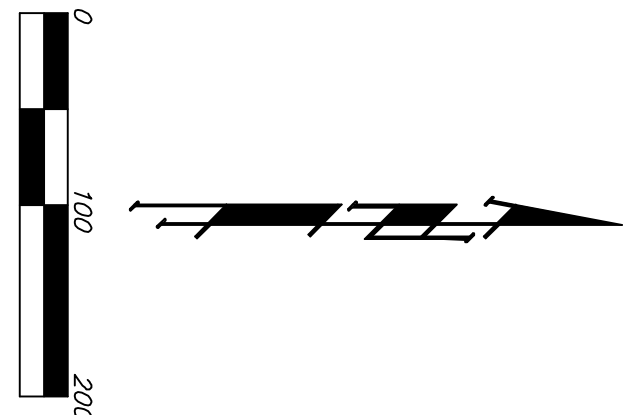
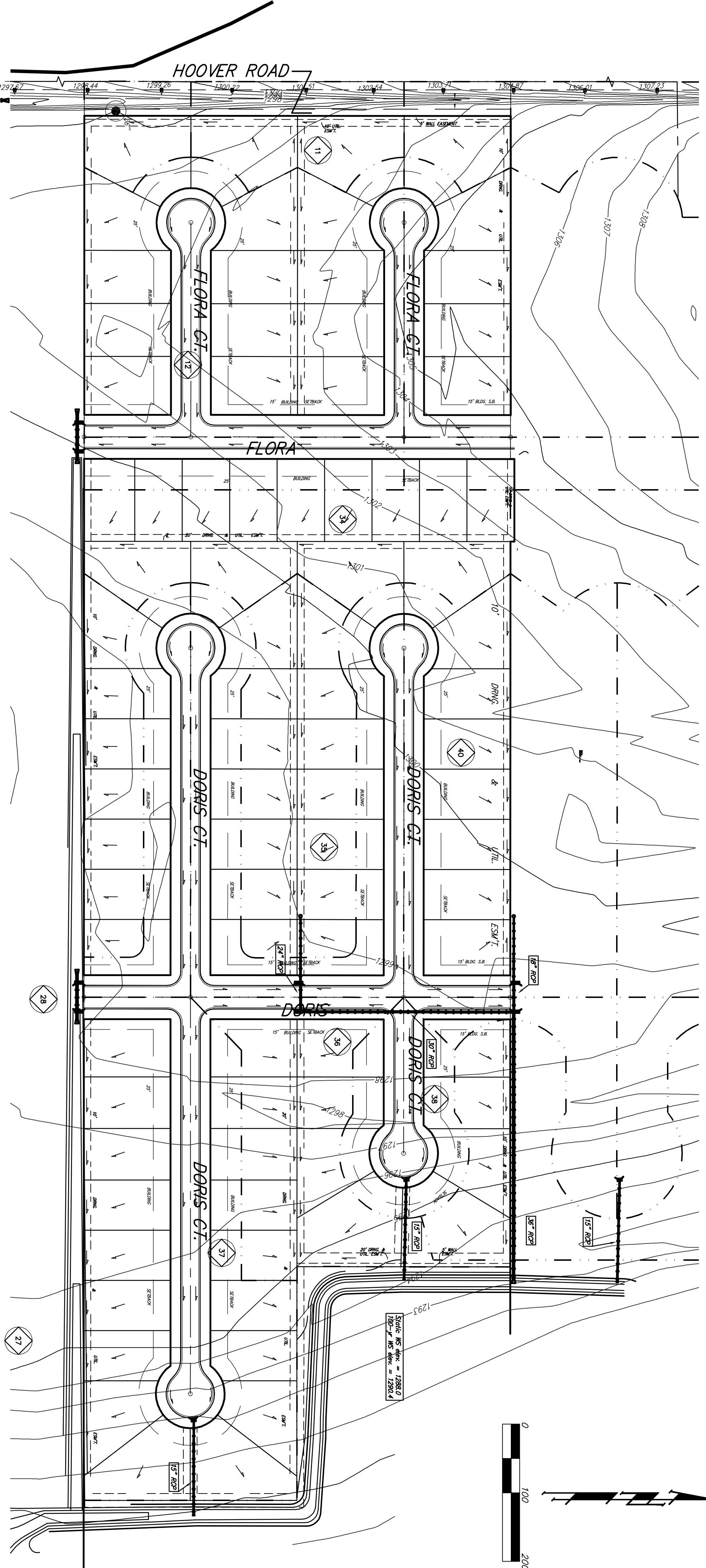


# DRAINAGE PLAN TRINITY POINT WICHITA, SEDGWICK COUNTY, KANSAS



Basin ID	Area acres	Runoff Coefficient				Peak Flowrate			
		2-yr in/in	5-yr in/in	100-yr in/in	2-yr cfs	5-yr cfs	100-yr cfs		
1	0.2	0.42	0.44	0.59	0.3	0.4	0.9		
2	1.2	0.42	0.44	0.59	1.9	2.4	5.2		
3	3.2	0.42	0.44	0.59	5.1	6.4	14		
4	0.3	0.42	0.44	0.59	0.5	0.6	1.3		
5	0.9	0.42	0.44	0.59	1.4	1.8	3.9		
6	11.7	0.42	0.44	0.59	19	24	51		
7	0.8	0.42	0.44	0.59	1.3	1.6	3.5		
8	0.8	0.42	0.44	0.59	1.3	1.6	3.5		
9	1.1	0.42	0.44	0.59	1.8	2.2	4.8		
10	5.1	0.42	0.44	0.59	8.2	10	22		
11	4.4	0.42	0.44	0.59	7.1	8.8	19		
12	5.0	0.42	0.44	0.59	8.0	10	22		
13	1.2	0.42	0.44	0.59	1.9	2.4	5.2		
14	1.3	0.42	0.44	0.59	2.1	2.6	5.7		
15	0.6	0.42	0.44	0.59	1.0	1.2	2.6		
16	0.7	0.42	0.44	0.59	1.1	1.4	3.0		
17	1.5	0.42	0.44	0.59	2.4	3.0	6.5		
18	3.9	0.42	0.44	0.59	6.3	7.8	17		
19	2.4	0.42	0.44	0.59	3.9	4.8	10		
20	1.3	0.42	0.44	0.59	2.1	2.6	5.7		
21	0.4	0.42	0.44	0.59	0.6	0.8	1.7		
22	1.3	0.42	0.44	0.59	2.1	2.6	5.7		

23	1.7	0.42	0.44	0.59	2.7	3.4	7.4
24	3.0	0.42	0.44	0.59	4.8	6.0	13
25	3.0	0.42	0.44	0.59	4.8	6.0	13
26	1.2	0.42	0.44	0.59	1.9	2.4	5.2
27	1.1	0.42	0.44	0.59	1.8	2.2	4.8
28	2.7	0.42	0.44	0.59	4.3	5.4	12
29	1.1	0.42	0.44	0.59	1.8	2.2	4.8
30	0.8	0.42	0.44	0.59	1.3	1.6	3.5
31	0.8	0.42	0.44	0.59	1.3	1.6	3.5
32	0.3	0.42	0.44	0.59	0.5	0.6	1.3
33	1.4	0.42	0.44	0.59	2.3	2.8	6.1
34	5.3	0.42	0.44	0.59	8.5	11	23
35	2.4	0.42	0.44	0.59	3.9	4.8	10
36	0.4	0.42	0.44	0.59	0.6	0.8	1.7
37	2.2	0.42	0.44	0.59	3.5	4.4	10
38	1.0	0.42	0.44	0.59	1.6	2.0	4.3
39	0.3	0.42	0.44	0.59	0.5	0.6	1.3
40	4.2	0.42	0.44	0.59	6.8	8.4	18
41	1.0	0.42	0.44	0.59	1.6	2.0	4.3
42	0.3	0.42	0.44	0.59	0.5	0.6	1.3
43	0.1	0.42	0.44	0.59	0.2	0.2	0.4
44	1.2	0.42	0.44	0.59	1.9	2.4	5.2
45	3.9	0.42	0.44	0.59	20	28	66

