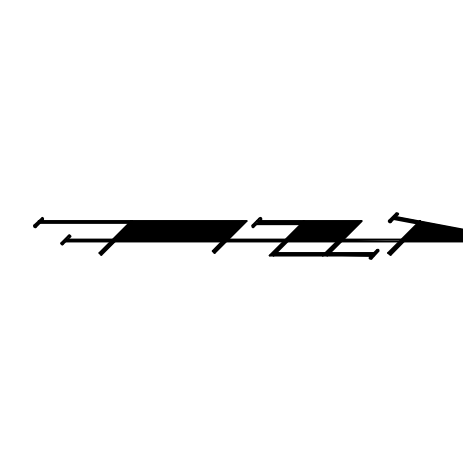
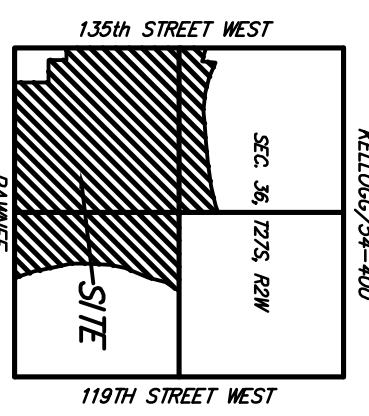
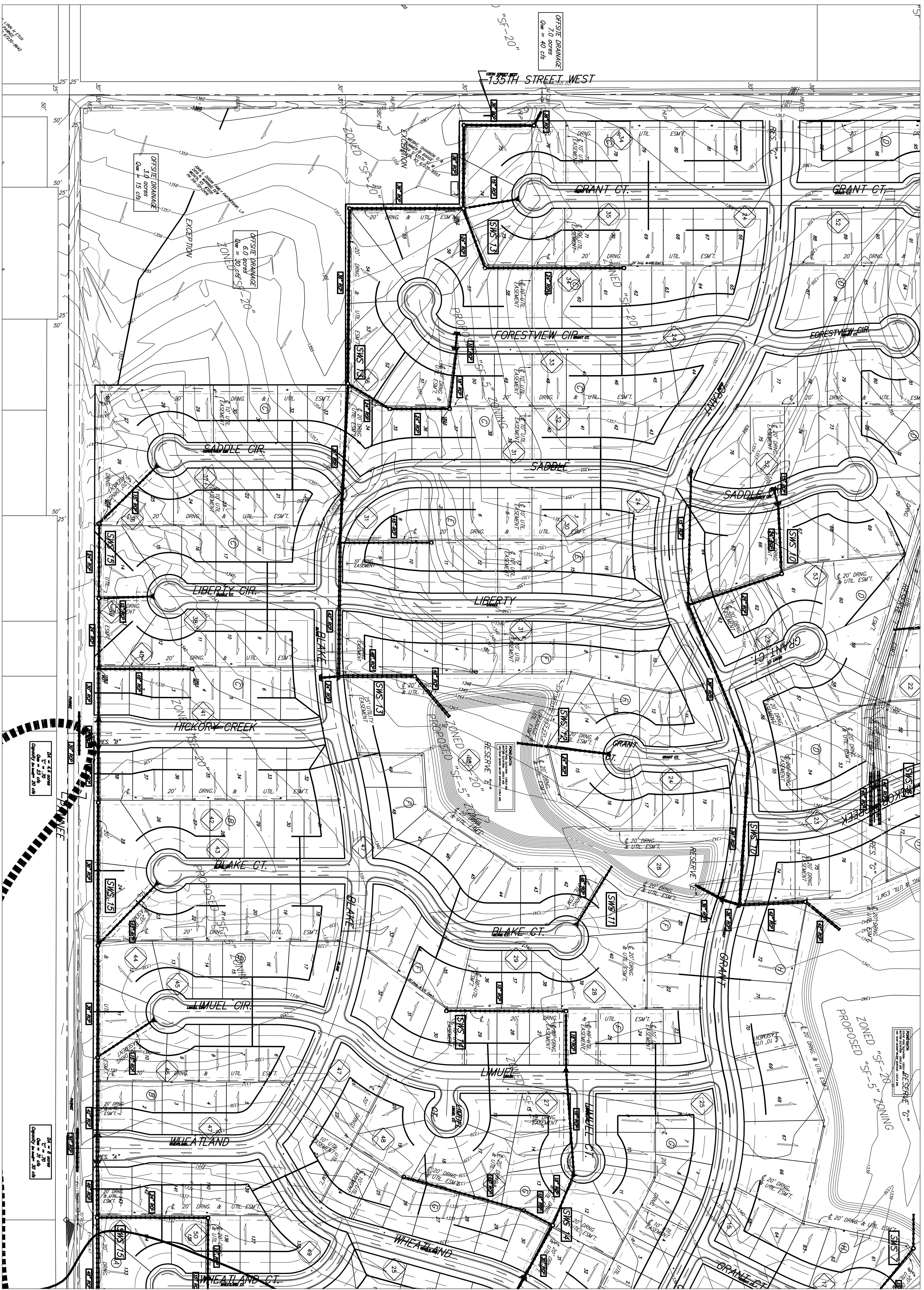
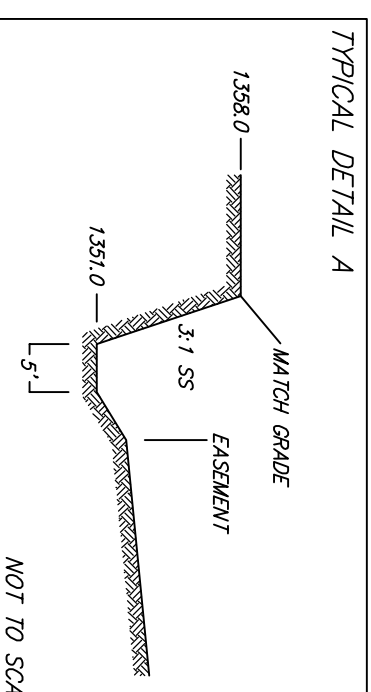


# DRAINAGE PLAN TURKEY CREEK 3RD ADDITION WICHITA, SEDGWICK COUNTY, KANSAS



DRAWN BY: M. & P. BAUGHMAN  
 CHECKED BY: M. & P. BAUGHMAN  
 DATE OF REVISION: 05 JAN 2004  
 DATE OF THROUGH: 05 JAN 2004  
 COUNTY: SEDGWICK  
 CITY: WICHITA  
 ELEV. = 1086.63 METERS @ 3580.00 FEET



Basin ID	Area acres	Existing Flowrates			Developed Flowrates		
		2Yr	5Yr	100Yr	2Yr	5Yr	100Yr
1	1.3	7.2	3.0	5.6	2.8	3.2	6.4
2	1.3	7.2	3.0	5.6	2.8	3.2	6.4
3	3.9	6.7	8.9	1.7	7.8	9.6	17.9
4	11	18	25	48	22	27	63
5	2.9	3.4	4.8	6.5	4.0	4.9	9.9
6	5.5	9.5	13	24	11	14	27
7	1.2	2.2	2.7	4.7	2.2	2.7	4.7
8	1.2	2.2	2.7	4.7	2.2	2.7	4.7
9	8.6	15	20	37	17	21	42
10	1.2	2.1	2.7	5.1	2.4	3.0	5.9
11	1.1	1.9	2.5	4.7	2.2	2.7	5.4
12	2.8	4.5	5.9	11	5.2	6.4	13
13	2.8	4.5	5.9	11	5.2	6.4	13
14	2.8	4.5	5.9	11	5.2	6.4	13
15	5.6	9.7	13	24	11	14	28
16	1.4	2.4	3.2	6.0	2.8	3.4	6.9
17	1.2	2.1	2.7	5.1	2.4	3.0	5.9
18	1.9	3.3	4.3	8.1	3.8	4.7	9.4
19	2.1	4.0	5.2	10	5.4	6.8	13
20	2.1	4.0	5.2	10	5.4	6.8	13
21	1.2	2.1	2.7	5.1	2.4	3.0	5.9
22	1.5	2.6	3.4	6.4	3.0	3.7	7.4
23	5.3	9.1	12	23	11	13	26
24	5.5	9.5	13	24	11	14	27
25	4.5	8.5	11	21	9.0	11	22
26	4.5	8.5	11	21	9.0	11	22
27	2.2	3.8	5.0	9.4	4.4	5.4	11
28	1.2	2.1	2.7	5.1	2.4	3.0	5.9
29	1.4	2.4	3.1	6.0	2.8	3.4	6.9
30	1.9	3.1	4.1	7.7	3.6	4.4	8.9
31	0.9	1.6	2.1	3.8	1.8	2.2	4.0
32	0.9	1.6	2.1	3.8	1.8	2.2	4.0
33	2.3	4.0	5.2	10.8	4.8	5.7	11
34	4.5	7.8	10	19	9.0	11	22
35	1.3	2.2	3.0	5.8	2.6	3.2	6.4
36	4.0	6.9	9.1	17	8.0	9.8	20
37	1.4	2.4	3.2	6.0	2.8	3.4	6.9
38	0.4	0.7	0.9	1.7	0.8	1.0	2.0
39	1.5	2.6	3.4	6.4	3.0	3.7	7.4
40	1.5	2.6	3.4	6.4	3.0	3.7	7.4
41	2.0	3.4	4.4	8.5	4.0	4.9	9.9
42	1.9	3.1	4.1	7.7	3.6	4.4	8.9
43	1.5	2.6	3.4	6.4	3.0	3.7	7.4
44	1.1	1.8	2.3	4.7	2.2	2.7	5.4
45	1.1	1.8	2.3	4.7	2.2	2.7	5.4
46	1.5	2.6	3.4	6.4	3.0	3.7	7.4
47	8.0	14	18	34	16	20	40
48	1.2	2.1	2.7	5.1	2.4	3.0	5.9
49	7.3	13	17	33	16	20	40
50	3.0	5.2	6.8	14	6.0	7.4	15
51	3.0	5.2	6.8	14	6.0	7.4	15
52	7.7	13	17	33	16	20	38
53	2.0	3.4	4.4	8.5	4.0	4.9	9.9
TOTAL	202	348	481	865	403	498	999

NOTE: FEMA Floodplain scaled per location  
 per FEMA Form 200321 02004, Effective  
 Date June 3, 1996.

Base Flood Elevations and Cross Sections  
 determined per HEC-2 modeling previously  
 submitted with Turkey Creek 2nd Addition.

A Floodplain Fill Permit will be obtained  
 from the Kansas Department of Water  
 Resources prior to development on lots in  
 the Floodplain, as established by the  
 HEC-2 model.