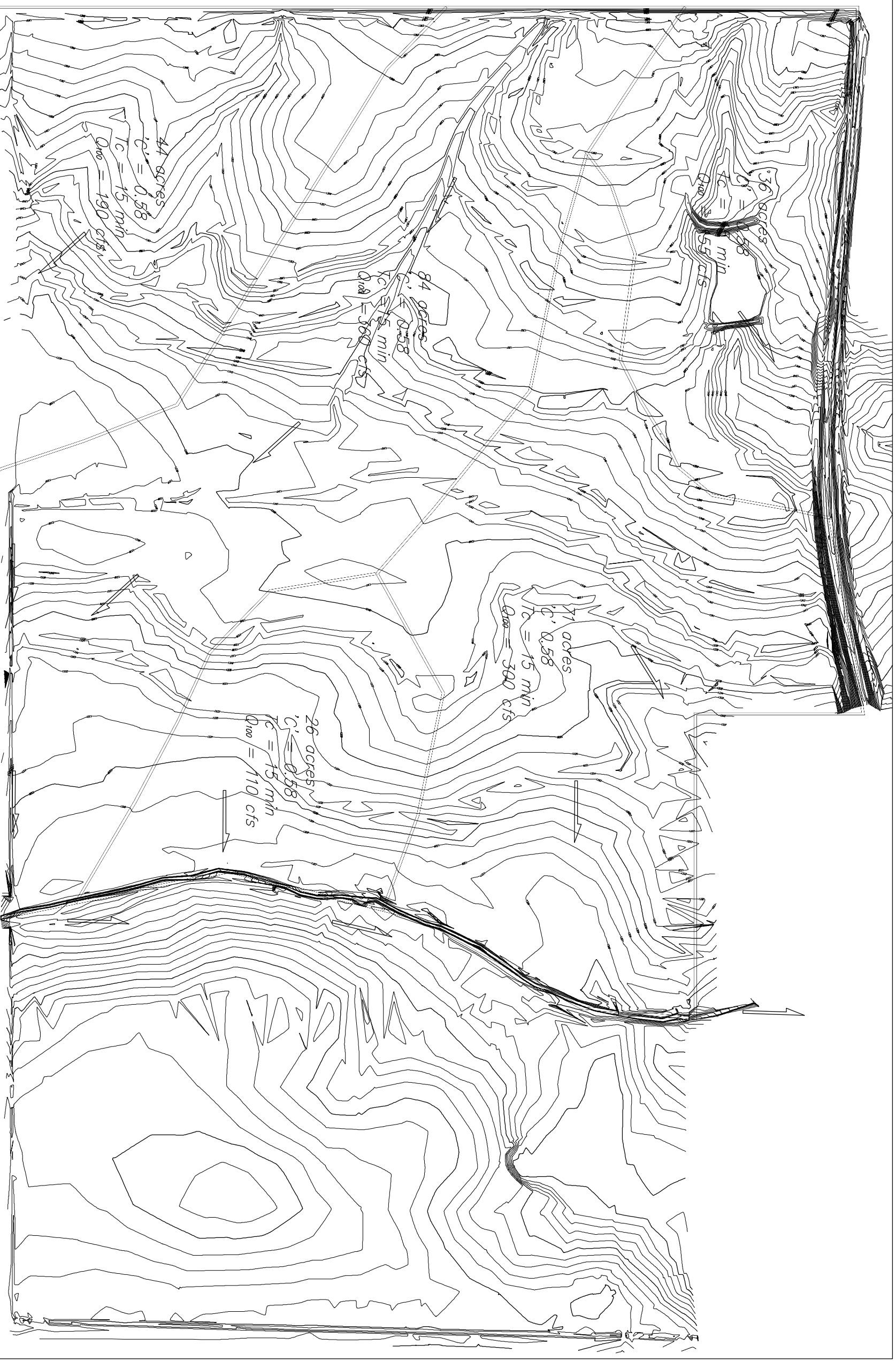


EXISTING SITE DRAINAGE
TURKEY CREEK 3RD ADDITION
WICHITA, SEDGWICK COUNTY, KANSAS

7 acres
CN = 65
Tc = 15 min
Q₁₀₀ = 40 cfs

45 acres
CN = 65
Tc = 23 min
Q₁₀₀ = 220 cfs

7 acres
CN = 65
Tc = 15 min
Q₁₀₀ = 40 cfs



Scale 1" = 1000'

