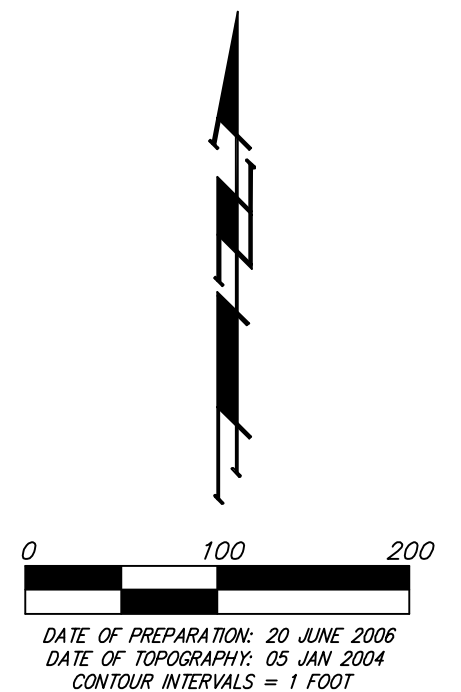
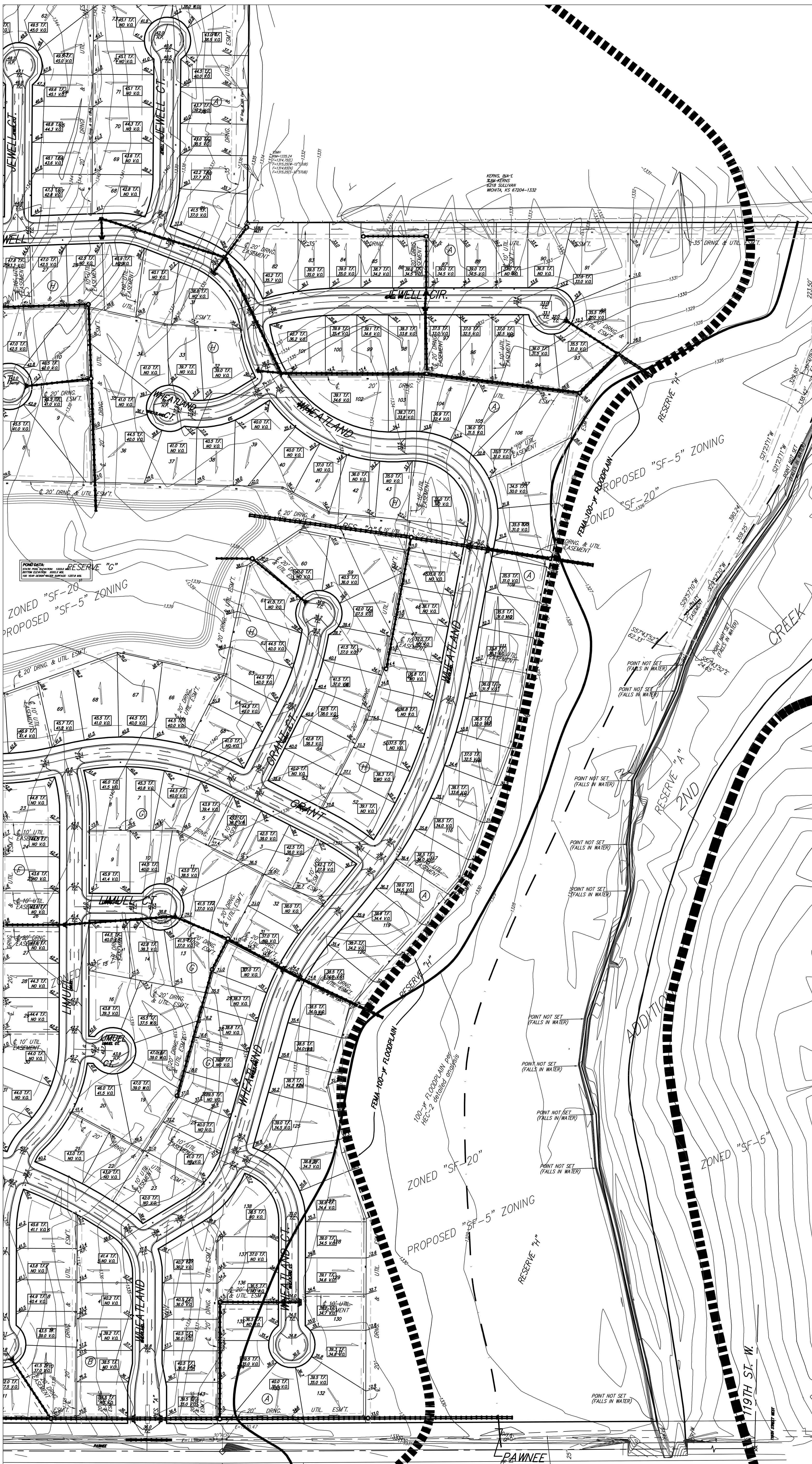
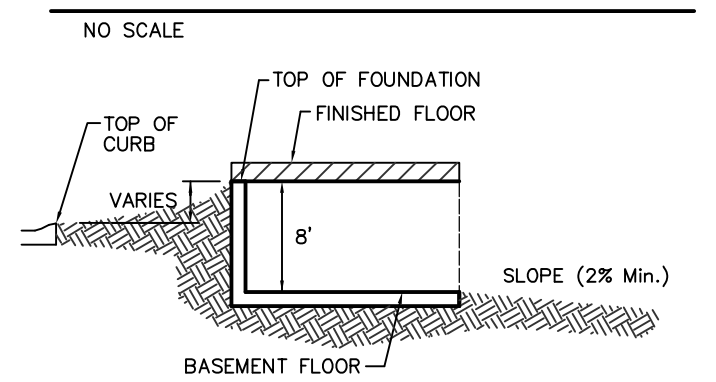
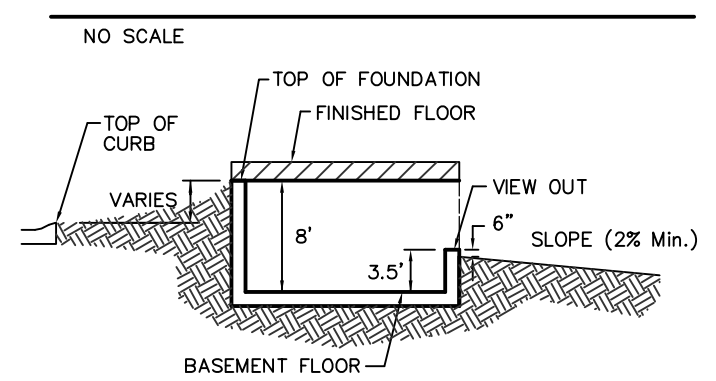
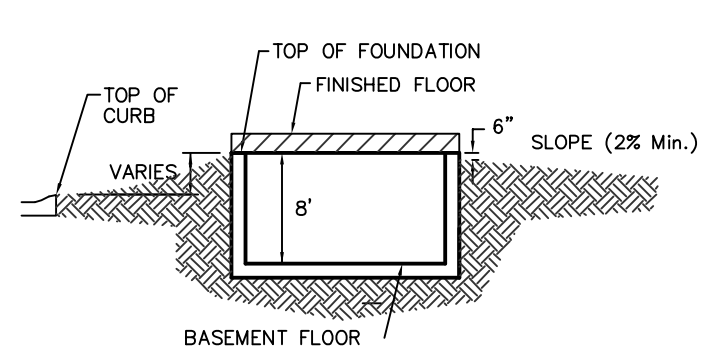
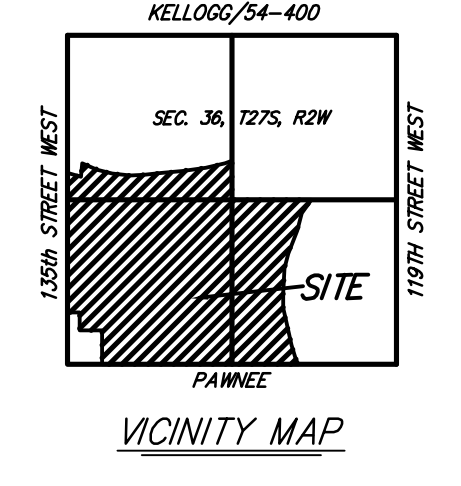


GRADING PLAN TURKEY CREEK 3RD ADDITION WICHITA, SEDGWICK COUNTY, KANSAS



DATE OF PREPARATION: 20 JUNE 2006
DATE OF TOPOGRAPHY: 05 JAN 2004
CONTOUR INTERVALS = 1 FOOT

BENCHMARK:
137H ST. W. & PAWNEE -
CITY OF WICHITA BENCHMARK DISC ON SW
CORNER OF CONCRETE BASE OF HIGH LINE POLE.
ELEV. = 1330.65 MDS29



- NOTES:**
1. PROPOSED TOP OF FOUNDATION ELEVATIONS ARE SHOWN ON PLANS. CONTRACTOR TO SET FINISHED FLOOR AND GARAGE FLOOR ELEVATIONS. ALL STREET ELEVATIONS SHOWN ON PLANS ARE FOR TOP OF CURB (FULL-HEIGHT).
 2. THIS GRADING PLAN IS DESIGNED WITH VIEW-OUTS AND WALK-OUTS. ELEVATIONS SHOWN AS XX.X V.O. DEPICT VIEW-OUT STRUCTURES. ELEVATIONS SHOWN AS XX.X W.O. DEPICT WALK-OUT STRUCTURES.
 3. ALL LOTS SHALL MEET MINIMUM PAD REQUIREMENT AS SHOWN ON THE RECORDED PLAT.

| LOT | BLOCK | ELEVATION |
|----------------|-------|-----------|
| 16-18 | 21-36 | A 1354.0 |
| 91-93, 106-108 | A | 1329.0 |
| 109-114 | A | 1330.0 |
| 115-117 | A | 1331.0 |
| 118-128 | A | 1333.0 |
| 129-133 | A | 1334.0 |
| 1-8, 12-20 | F | 1343.5 |
| 41-49 | F | 1343.0 |
| 2-9 | H | 1341.0 |
| 36-40 | H | 1341.0 |
| 60-64 | H | 1340.0 |
| 66-73 | H | 1340.0 |
| 75-77 | H | 1341.0 |

4. LOT DIMENSIONS HAVE BEEN OMITTED ON THIS PLAN. REFER TO THE RECORDED PLAT FOR FINAL DIMENSION, EASEMENT, & BUILDING SETBACK INFORMATION.
5. HOUSE PAD ELEVATIONS DEPICTED WITH BOLD OUTLINES AND NOTED WITH THIS SYMBOL ● INDICATE THAT DEEP FOOTINGS OR DEEP FOUNDATIONS MAY BE REQUIRED.
6. A DRAINAGE PLAN HAS BEEN DEVELOPED FOR THIS SUBDIVISION AND IS ON FILE WITH THE CITY OF WICHITA, KANSAS. DRAINAGE INTENT SHALL REMAIN AS DEPICTED OR AS MODIFIED WITH THE APPROVAL OF THE CITY ENGINEER OF THE CITY OF WICHITA, KANSAS. NO OBSTRUCTIONS WHICH IMPEDE THE FLOW OF THIS DRAINAGE PLAN SHALL BE ALLOWED.
7. ALL ELEVATIONS SHOWN ARE IN NVGD.

NOTE: FEMA Floodplain scaled per location per FEMA FIRM 200321 0200A, Effective Date June 3, 1996.

Base Flood Elevations and Cross Sections determined per HEC-2 modeling previously submitted with Turkey Creek 2nd Addition.