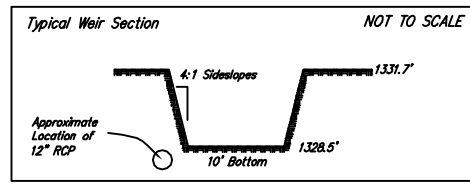


DRAINAGE & GRADING PLAN

USD 385 ADDITION

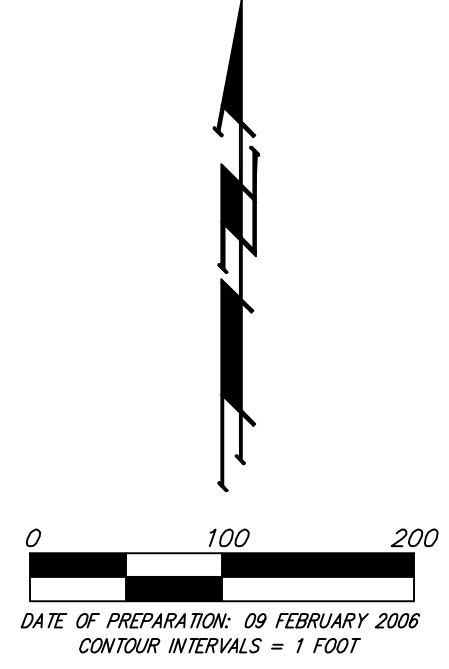
WICHITA, SEDGWICK COUNTY, KANSAS



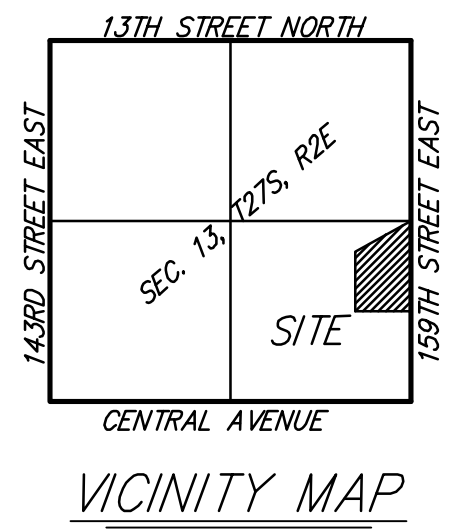
NOTE: Upon site development, all developed runoff will need to be directed to the detention pond in the north west corner of the property via internal storm sewer systems. Also, a berm and/or swale may need to be constructed along the west edge of the property to limit any offsite drainage.

Dry Detention Pond
 Bottom of Detention = 1327.0
 100-yr Water Surface = 1330.7
 12" Outlet @ 1327.0 into KTA ROW
 10' Overflow Weir @ 1328.5

INTERSTATE 35 KANSAS TURNPIKE
 (PER CONDEMNATION CASE A-54126)

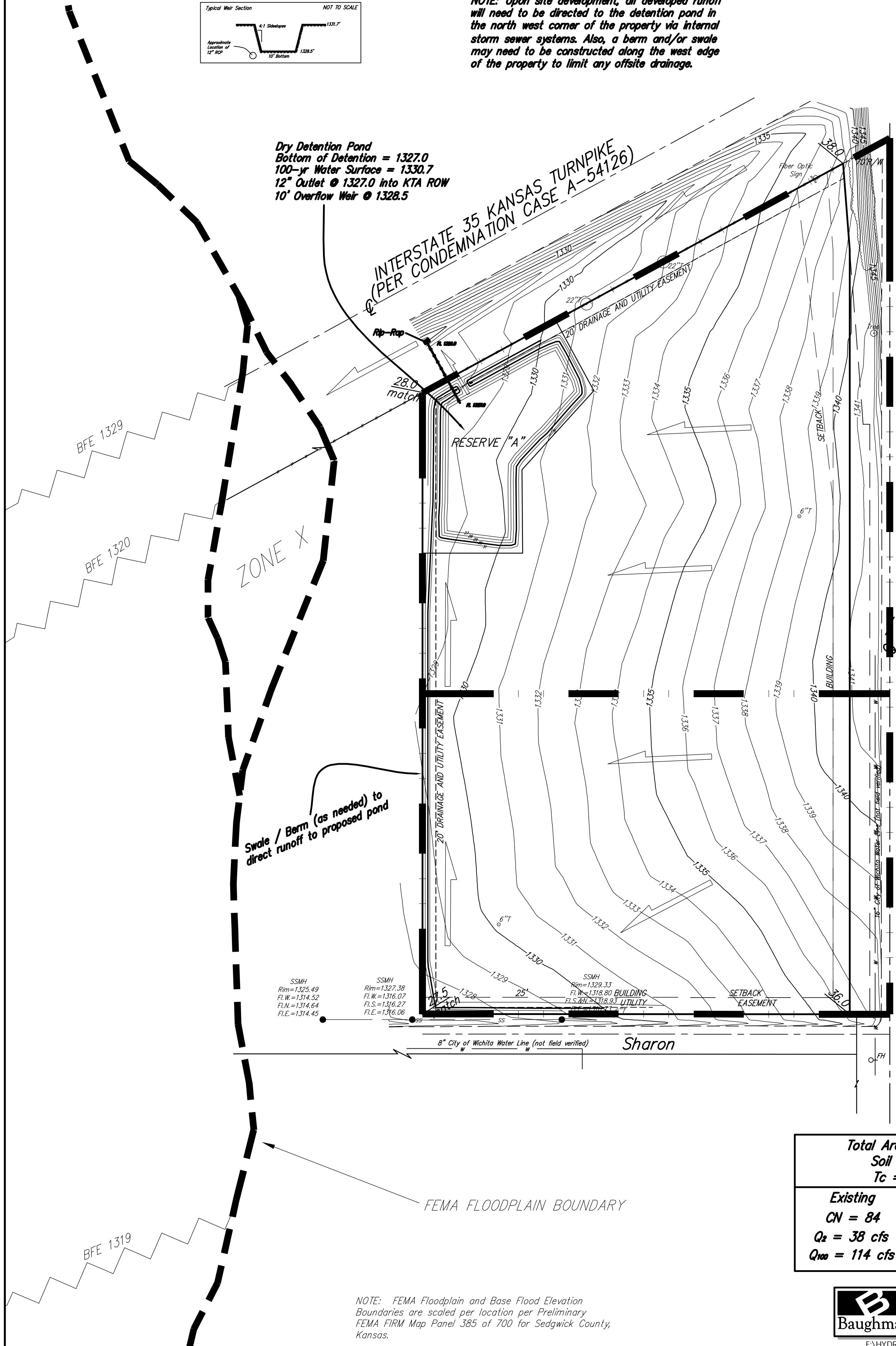


BENCHMARK:
 RAIL ROAD SPIKE IN POWER POLE 464'
 SOUTH & 50' EAST OF THE NE CORNER
 OF THE SE 1/4 OF SEC. 13.
 ELEVATION = 1344.52 NGVD29



MINIMUM BUILDING PAD ELEVATIONS FOR LOWEST OPENING TO THE STRUCTURES

LOT	BLOCK	ELEVATION
1	A	1333.0



Swale / Berm (as needed) to direct runoff to proposed pond

SSMH
 Rim=1325.49
 Fl.W.=1314.52
 Fl.N.=1314.64
 Fl.E.=1314.45

SSMH
 Rim=1327.38
 Fl.W.=1316.07
 Fl.S.=1316.27
 Fl.E.=1316.06

SSMH
 Rim=1329.33
 Fl.W.=1318.80 BUILDING
 Fl.S.=1318.93 UTILITY

8" City of Wichita Water Line (not field verified) Sharon

FEMA FLOODPLAIN BOUNDARY

Total Area = 16.3 acres	
Soil Type = D	
Tc = 15 min	
Existing	Developed
CN = 84	CN = 95
Q ₂ = 38 cfs	Q ₂ = 54 cfs
Q ₁₀₀ = 114 cfs	Q ₁₀₀ = 127 cfs

NOTE: FEMA Floodplain and Base Flood Elevation Boundaries are scaled per location per Preliminary FEMA FIRM Map Panel 385 of 700 for Sedgwick County, Kansas.

09 FEBRUARY 2006

Baughman Company, P.A.
 315 Ellis St. Wichita, KS 67211 P 316-262-7271 F 316-262-0149
 ENGINEERING | SURVEYING | PLANNING | LANDSCAPE ARCHITECTURE

F:\HYDRO\Projects\AndoverSchool\AndoverElementarySchool_drainplan.dwg