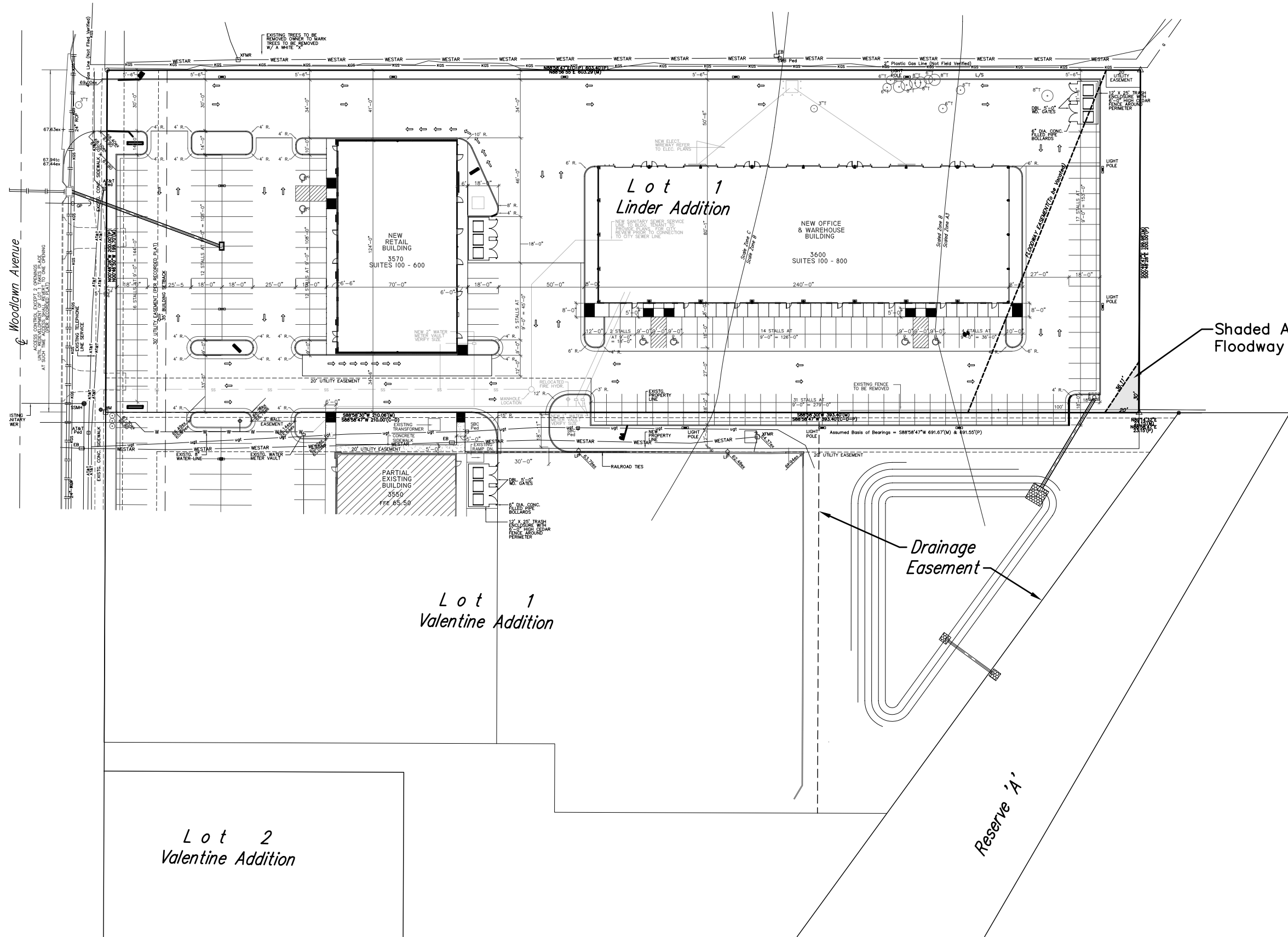
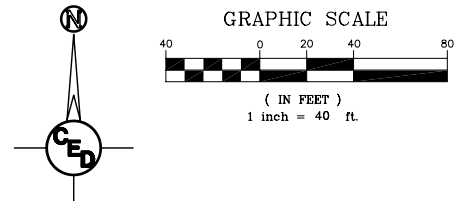


SITE PLAN

RETAIL & OFFICE/WAREHOUSE BUILDINGS

Wichita, Kansas



Shaded Area is New Floodway Easement

Drainage Easement

RETAIL & OFFICE/WAREHOUSE CENTER		
SITE PLAN		
3570 & 3600 N. WOODLAWN AVE., WICHITA, KS		
CED PROJ. NO.: 20061424		
CERTIFIED ENGINEERING DESIGN, P.A.		
810 WEST DOUGLAS, SUITE C		
WICHITA, KANSAS 67203		
PH.(316)262-8808 FAX.(316)262-1669		
DESIGNED: HDF	SCALE: 1"=40'	SHEET 1
DRAWN: CKW	DATE: 9/06	TOTAL 1
CHECKED: HDF	CED FILE: CED-1XXX	