

# DRAINAGE PLAN FOR WESTPORT THIRD ADDITION

*Existing Site and Offsite Runoff*

Block #	Acres	Tc	C5	15	C100	1100	Q5	Q100
Area 1	0.24	15.0 min	0.22	4.56	0.41	7.37	0.24cfs	0.73cfs
Area 2	3.97	15.0 min	0.22	4.56	0.41	7.37	3.98cfs	12.00cfs
Area 3	1.01	15.0 min	0.22	4.56	0.41	7.37	1.07cfs	3.05cfs
Keith Drain Area	11.63	47.3 min	0.46	2.55	0.65	4.35	13.08cfs	31.54cfs
Westfield Drain Area	13.54	43.2 min	0.46	2.55	0.65	4.35	13.54cfs	38.12cfs
Total Runoff=							31.85cfs	85.44cfs

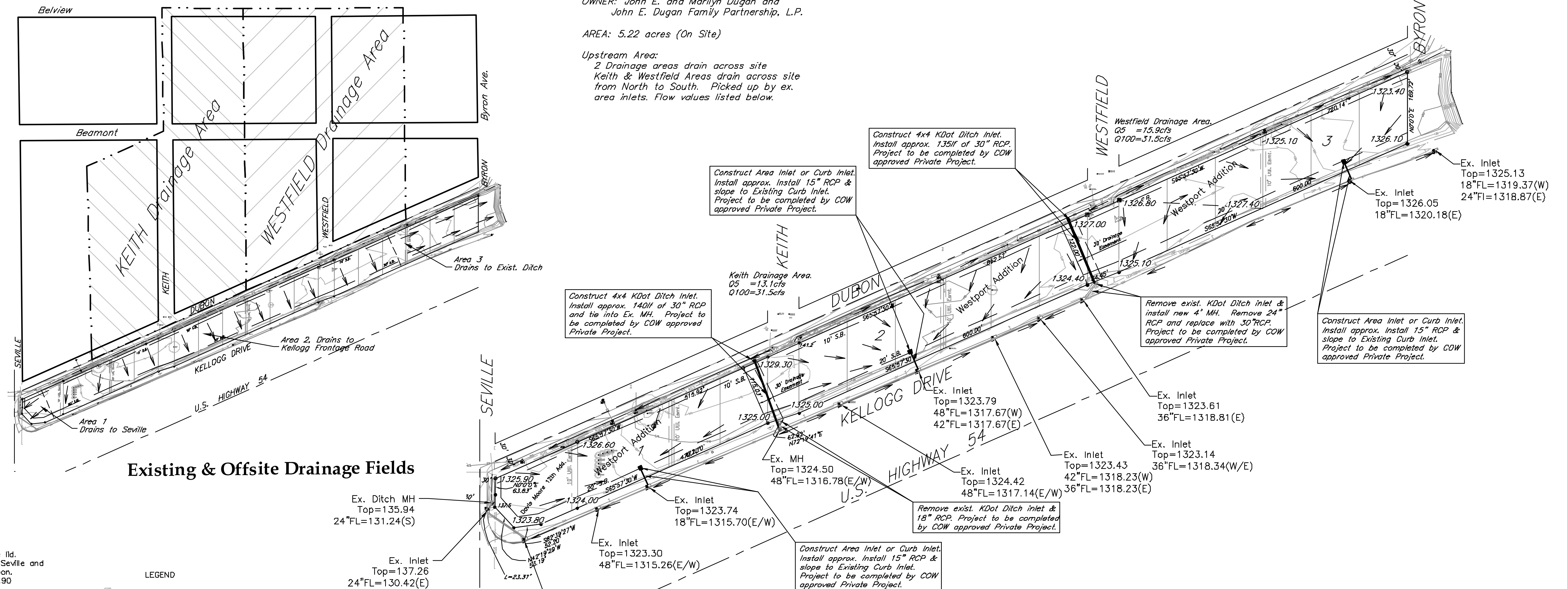
*Proposed Site and Offsite Runoff*

Block #	Acres	Tc	C5	15	C100	1100	Q5	Q100
Lot 1	1.41	15.0 min	0.69	4.56	0.80	7.37	4.44cfs	8.31cfs
Lot 2	1.85	15.0 min	0.69	4.56	0.80	7.37	5.82cfs	10.91cfs
Lot 3	1.96	15.0 min	0.69	4.56	0.80	7.37	6.16cfs	11.56cfs
Keith Drain Area	11.63	47.3 min	0.46	2.55	0.65	4.35	13.08cfs	31.54cfs
Westfield Drain Area	13.54	43.2 min	0.46	2.55	0.65	4.35	13.54cfs	38.12cfs
Total Runoff=							43.04cfs	100.44cfs

OWNER: John E. and Marilyn Dugan and John E. Dugan Family Partnership, L.P.

AREA: 5.22 acres (On Site)

Upstream Area:  
2 Drainage areas drain across site  
Keith & Westfield Areas drain across site from North to South. Picked up by ex. area inlets. Flow values listed below.



## Existing & Offsite Drainage Fields

## Proposed Drainage Plan

Benchmark:  
Inlet manhole lid,  
East side of Seville and  
South of Dubon,  
Elev. = 1324.90

- LEGEND
- Cedar Tree
  - Fire Hydrant
  - Light Pole
  - Manhole
  - Power Pole
  - Sign
  - Tree
  - Water Valve
  - Kansas Gas Service Line
  - Sanitary Sewer
  - Fence
  - 1/2" Rebar (found) PEC LS #65
  - 1/2" Rebar (found)
  - 5/8" Rebar (found)
  - 3/4" Iron Pipe (found)
  - 3/4" Pinched Iron Pipe (found)

