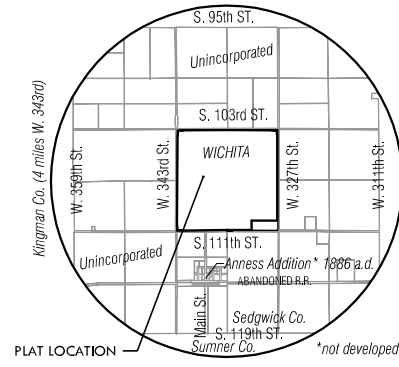


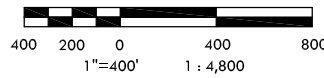
FINAL PLAT

WICHITA SAFETY FACILITY ADDITION

AN ADDITION TO WICHITA, SEDGWICK COUNTY, KANSAS



VICINITY MAP



Basis of Bearings: Kansas Coordinate System 1983 south zone bearing of N89°40'43"E, 2651.22' along the N. line of the NE. 1/4, Sec. 26, T29S, R4W, 6th P.M.

LEGEND

- △ = Section Corner Monument Found
- = Found 3/8" Rebar w/ Armstrong id cap
- = Set 3/8" Rebar w/ MKEC CLS 39 id. cap
- (M) = Measured
- (D) = Deeded
- (CM) = Calculated from measured
- ▭ = FEMA FIRM Zone "A"

ACCESS CONTROL NOTE

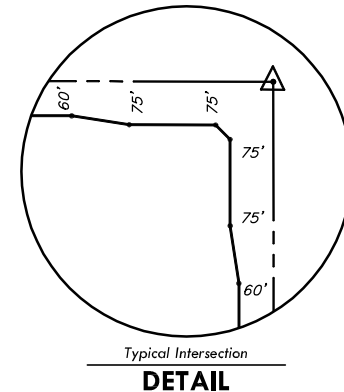
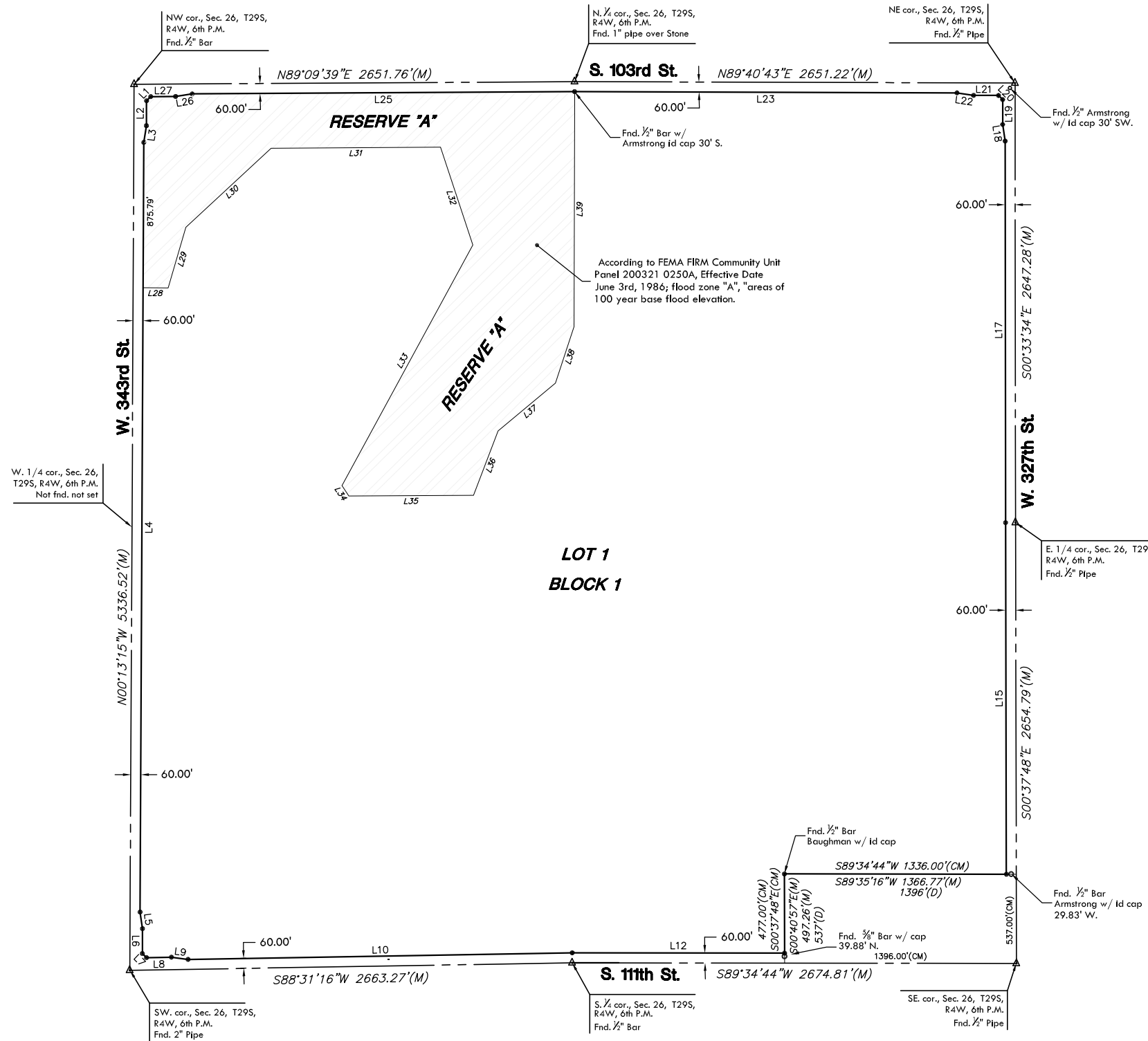
Applicable to: W. 343rd St., W. 327th St., S. 119th St., S. 103rd St.
 The minimum distance between full turning movement drives shall be 400'.
 The minimum distance between a right-in/right-out drive and either another right-in/right-out drive or a full movement drive shall be 200'.

BENCH MARKS

- Datum BM: NGS Disc in concrete stamped Anness 1962. Disc is 61' NW. of SE corner of Section 26, T29S, R4W. Elev. = 1381.00 (NGVD 29)
- BM 1: Top of bolt in S. end of CMP, 280' E. of the S. 1/4 corner Section 26, T29S, R4W. (pointed orange) Elev. = 1376.88 (NGVD 29)

NOTE

The lowest opening(s) elevation or minimum pad elevation(s) will be determined and approved prior to the issuance of a building permit(s).



Typical Intersection DETAIL

LINE TABLE

LINE	LENGTH	BEARING
L1	35.55	N44°28'12"E
L2	150.00	N00°13'15"W
L3	101.12	N08°18'36"E
L4	4,635.65	N00°13'15"W
L5	101.12	N08°45'05"W
L6	150.00	N00°13'15"W
L7	34.97	N45°50'59"W
L8	150.00	S88°31'16"W
L9	101.12	N82°56'53"W
L10	2,312.80	S88°31'16"W
L11	1,278.51	S89°34'44"W
L12	477.14	S00°40'57"E
L13	1,336.60	S89°35'16"W
L14	2,117.39	S00°37'48"E
L15	2,297.85	S00°33'34"E
L16	101.12	S09°05'24"E
L17	150.00	S00°33'34"E
L18	35.43	S45°26'25"E
L19	150.00	N89°40'43"E
L20	101.12	S81°47'26"E
L21	2,301.51	N89°40'43"E
L22	2,302.04	N89°09'39"E
L23	101.12	N80°37'49"E
L24	150.00	N89°09'39"E
L25	150.00	N89°46'45"E
L26	380.00	N15°54'11"E
L27	700.00	N46°37'09"E
L28	1,020.00	N89°09'39"E
L29	620.00	S18°47'50"E
L30	1,650.00	S28°02'00"W
L31	75.00	S34°11'42"E
L32	750.00	N89°11'40"E
L33	415.00	N20°27'08"E
L34	450.00	N49°44'03"E
L35	358.62	N17°31'14"E
L36	1,415.00	N00°20'23"W



411 N. WEBB ROAD
 WICHITA, KS. 67206
 316-684-9600

J:\Civil\BASS\Proj\BASS2016.dwg 10/23/2016 11:32:37 AM JST

FINAL PLAT

WICHITA SAFETY FACILITY ADDITION

AN ADDITION TO WICHITA, SEDGWICK COUNTY, KANSAS

I, Gregory J. Allison, a registered land surveyor in Kansas, do hereby certify that I have been in responsible charge of surveying and platting of "WICHITA SAFETY FACILITY ADDITION" an addition to Wichita, Sedgwick County, Kansas, into a Lot, a Block, a Reserve, and Streets, the same being accurately set forth in the accompanying plat and described herein:

All of Section 26, Township 29 South, Range 4 West of the Sixth Principal Meridian, Sedgwick County, Kansas; EXCEPT, BEGINNING at the Southeast corner of the Southeast Quarter of said Section 26, thence west along the South line of said Southeast Quarter 1,396 feet; thence north parallel with the East line of said Southeast Quarter 537 feet; thence east parallel with the South line of said Southeast Quarter 1,396 feet; thence south along the East line of said Southeast Quarter, 537 feet to the POINT OF BEGINNING.

All reserves, streets, utility easements, building setbacks, access controls, together with that part of a right-of-way agreement recorded Misc. Book 416, Page 493, together with any and all other public dedication, rights-of-way, and or easements within the above described property are hereby vacated and replatted by virtue of K.S.A. 12-512(b).

I hereby certify that the details of this plat are correct to the best of my knowledge and belief this ____ day of _____, 200__.

Gregory J. Allison, PE, LS #1257
MKEC Engineering Consultants, Inc.
411 North Webb Road
Wichita, Kansas 67206

Know all men by these presents that we the undersigned property owners of the land above set forth in the Registered Land Surveyor's Certificate, have caused the same to be surveyed and platted into a Lot, a Block, a Reserve, and Streets the same to be known as "WICHITA SAFETY FACILITY ADDITION," an addition to Wichita, Sedgwick County, Kansas. This plat shall adhere and conform to the recitals of case CON 2006-37, as approved and recorded at the Wichita-Sedgwick County Metropolitan Area Planning Department.

The streets and access controls are hereby dedicated to and for the use of the public.

All abutters right to access to or from W. 343rd St., W. 327th St., S. 119th St., S. 103rd St. over and across the boundary lines of "WICHITA SAFETY FACILITY ADDITION," are hereby granted to the appropriate governing body, provided however, the minimum distance between full turning movement drives shall be 400'. The minimum distance between a right-in/right-out drive and either another right-in/right-out drive or a full movement drive shall be 200'.

A drainage plan has been developed for this plat and all drainage easements, right-of-way, or reserves shall remain at established grades or as modified with the approval of the applicable City or County Engineer, and unobstructed to allow for the conveyance of storm water.

Lot 1, Block 1, is required to adhere to a lowest opening(s) elevation or minimum pad elevation(s) that will be determined and approved prior to the issuance of a building permit(s).

Reserves "A" is platted for drainage, landscaping, irrigation, open space, floodplain, and municipal uses deemed acceptable by the Director of Planning, Metropolitan Area Planning Department. The Reserve shall be owned and maintained by the City of Wichita or it's assigns, their grantees, licensees, and assignees in interest, provided however, that the undersigned may, at its discretion deed parcels of said Reserve to an owner(s) of an adjoining tract subject to the obligation to maintain such deeded parcel in compliance with the provisions hereof and in compliance with the maintenance covenants of any applicable restrictive covenants or regulations.

CITY OF WICHITA
At the direction of the City Council.

_____, Mayor
Carlos Mayans, Mayor

STATE OF KANSAS, SEDGWICK COUNTY} ss:

This instrument was acknowledged before me on this ____ day of _____, 2006, Carlos Mayans, Mayor, City of Wichita, Kansas.

IN WITNESS WHEREOF, I have hereunto set my hand and affixed my official seal, the day and year last above written.

_____, Notary Public
Notary Public: Karen Sublett, City Clerk
My Term Expires: _____.

STATE OF KANSAS, SEDGWICK COUNTY} ss:

This plat of "WICHITA SAFETY FACILITY ADDITION" has been submitted to and approved by the Wichita-Sedgwick County Metropolitan Area Planning Commission, Wichita, Kansas.

Dated this ____ day of _____, 200__.

WICHITA-SEDGWICK COUNTY METROPOLITAN AREA PLANNING COMMISSION

_____, Chair
Darrell A. Downing, Chair

Attest:
_____, Secretary
John L. Schlegel, Secretary

This plat of "WICHITA SAFETY FACILITY ADDITION" has been submitted to and approved by the City Council of the City of Wichita, Sedgwick County, Kansas. The rights-of-way and other public dedications are accepted by the City Council.
Dated this ____ day of _____, 200__.
At the direction of the City Council.

_____, Mayor
Carlos Mayans, Mayor

Attest:
_____, City Clerk
Karen Sublett, City Clerk

STATE OF KANSAS, SEDGWICK COUNTY} ss:

Entered on transfer record this ____ day of _____, 2006

_____, County Clerk
Don Brace, County Clerk

This is to certify that this instrument was filed for record in the Register of Deeds office this ____ day of _____, 200__, at _____ o'clock __M; and is duly recorded.

_____, Register of Deeds
Bill Meek, Register of Deeds

Attest:
_____, Deputy
Tonya E. Buckingham, Deputy

Reviewed in accordance with K.S.A. 58-2006 on this ____ day of _____, 200__.

_____, Deputy County Surveyor
Trida L. Robello, LS #1246
Deputy County Surveyor
Sedgwick County, Kansas



411 N. WEBB ROAD
WICHITA, KS. 67206
316-684-9600