

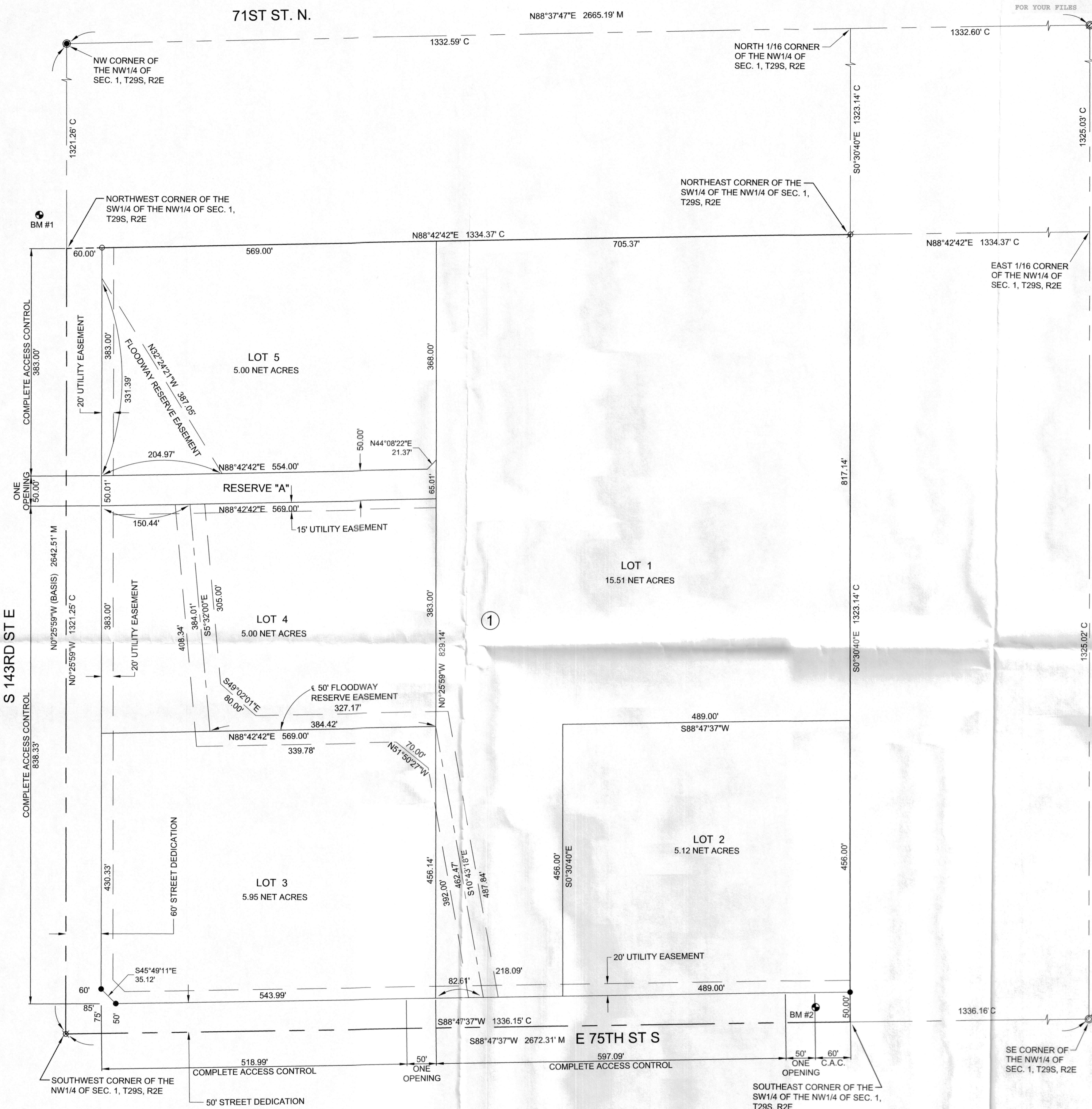
Arcebi Rosas

FOR YOUR FILES

FINAL TRACING REC'D  
RECEIVED SEP 06 2024

# DRAKE ESTATES

Sedgwick County, Kansas



State of Kansas)  
SS  
Sedgwick County)

We, Garver, LLC, Land Surveyors in aforesaid county and state, do hereby certify that, under the supervision of the undersigned, we have surveyed and platted "DRAKE ESTATES", Sedgwick County, Kansas, and that the accompanying plat is a true and correct exhibit of the property surveyed, described as follows:

The Southwest Quarter of the Northwest Quarter of Section 1, T29S, R2E of the 6th P.M., Sedgwick County, Kansas.

All public easements and dedications are hereby vacated by virtue of K.S.A. 12-512b, as amended.

State of Kansas)  
SS  
Sedgwick County)

The foregoing instrument acknowledged before me this \_\_\_\_ day of \_\_\_\_\_, 2024, by Bradley Bugner, Senior Vice President of Community Bank of Wichita, Inc., on behalf of the Bank.

\_\_\_\_\_, Notary Public

My appointment expires \_\_\_\_\_.

This plat of "DRAKE ESTATES", Sedgwick County, Kansas, has been submitted to and approved by the Wichita-Sedgwick County Metropolitan Area Planning Commission, Wichita, Kansas.

Dated this \_\_\_\_ day of \_\_\_\_\_, 2024.

Wichita-Sedgwick County Metropolitan Area Planning Commission

\_\_\_\_\_  
Robert Dool Chair  
\_\_\_\_\_  
Scott A. Wadle Secretary

This plat is approved and all dedications shown hereon, if any, accepted by the Board of County Commissioners of Sedgwick County, Kansas, this \_\_\_\_ day of \_\_\_\_\_, 2024.

\_\_\_\_\_  
Ryan Baty, Fourth District  
Chairman

ATTEST:  
\_\_\_\_\_  
Kelly B. Arnold  
County Clerk

Reviewed in accordance with K.S.A. 58-2005 on this \_\_\_\_ day of \_\_\_\_\_, 2024.

\_\_\_\_\_  
Tricia L. Robello, PS #1246  
Deputy County Surveyor  
Sedgwick County Kansas

Entered on transfer record this \_\_\_\_ day of \_\_\_\_\_, 2024.

\_\_\_\_\_  
Kelly B. Arnold  
County Clerk

State of Kansas)  
SS  
Sedgwick County)

This is to certify that this plat has been filed for record in the office of the Register of Deeds, this \_\_\_\_ day of \_\_\_\_\_, 2024, at \_\_\_\_ o'clock \_\_\_\_ M, and is duly recorded.

\_\_\_\_\_  
Tonya Buckingham  
Register of Deeds

\_\_\_\_\_  
Kenly Zehring  
Deputy

State of Kansas)  
SS  
Sedgwick County)

The foregoing instrument acknowledged before me, this \_\_\_\_ day of \_\_\_\_\_, 2024, by Christopher R. Drake and Kimberly N. Drake.

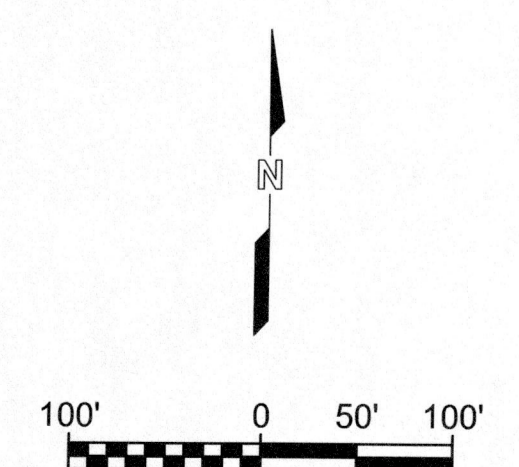
\_\_\_\_\_, Notary Public

My appointment expires \_\_\_\_\_.

We the undersigned, holders of a mortgage on a portion of the above described property, do hereby consent to this plat of "DRAKE ESTATES", Sedgwick County, Kansas.

Community Bank of Wichita, Inc.

\_\_\_\_\_  
Bradley Bugner  
Senior Vice President



BENCHMARK #1:  
CHISELED PLUS ON THE TOP OF THE NORTH END OF THE EAST REINFORCED CONCRETE PIPE, 1264' SOUTH OF THE CENTERLINE OF 71ST STREET SOUTH AND 48' WEST OF THE CENTERLINE OF 143RD STREET EAST, ELEVATION = 1330.13 (NAVD88, G18)

BENCHMARK #2:  
TOP OF RAILROAD SPIKE IN THE SOUTH FACE OF A POWER POLE, 1278' EAST OF THE CENTERLINE OF 143RD STREET EAST AND 25' NORTH OF THE CENTERLINE OF 71ST STREET SOUTH, ELEVATION = 1316.95 (NAVD88, G18)

(BASIS) = Basis of Bearings = Kansas Coordinate System of 1983 South Zone Grid Bearing  
M = Measured  
C = Calculated  
C.A.C. = Complete Access Control

#### SURVEY MARKER LEGEND

- ..... 1/2" REBAR W/BAUGHMAN CAP (FOUND)
- ⊗ ..... 1/2" REBAR W/CULLUM CAP (FOUND)
- ⊗ ..... 5/8" REBAR (FOUND - ORIGIN UNKNOWN)
- ⊗ ..... 3/4" IRON PIPE (FOUND - ORIGIN UNKNOWN)
- ⊗ ..... 1" IRON PIPE (FOUND - ORIGIN UNKNOWN)
- ..... 2" ALUMINUM CAP (FOUND - ORIGIN UNKNOWN)
- ..... 1/2" REBAR W/GARVER CAP (SET)