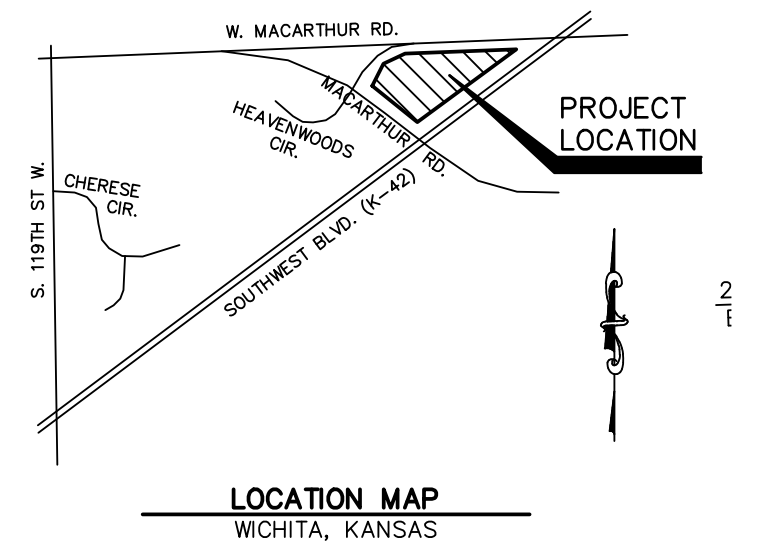
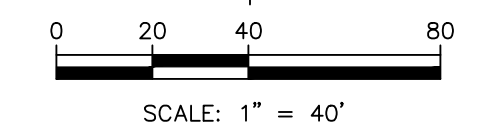
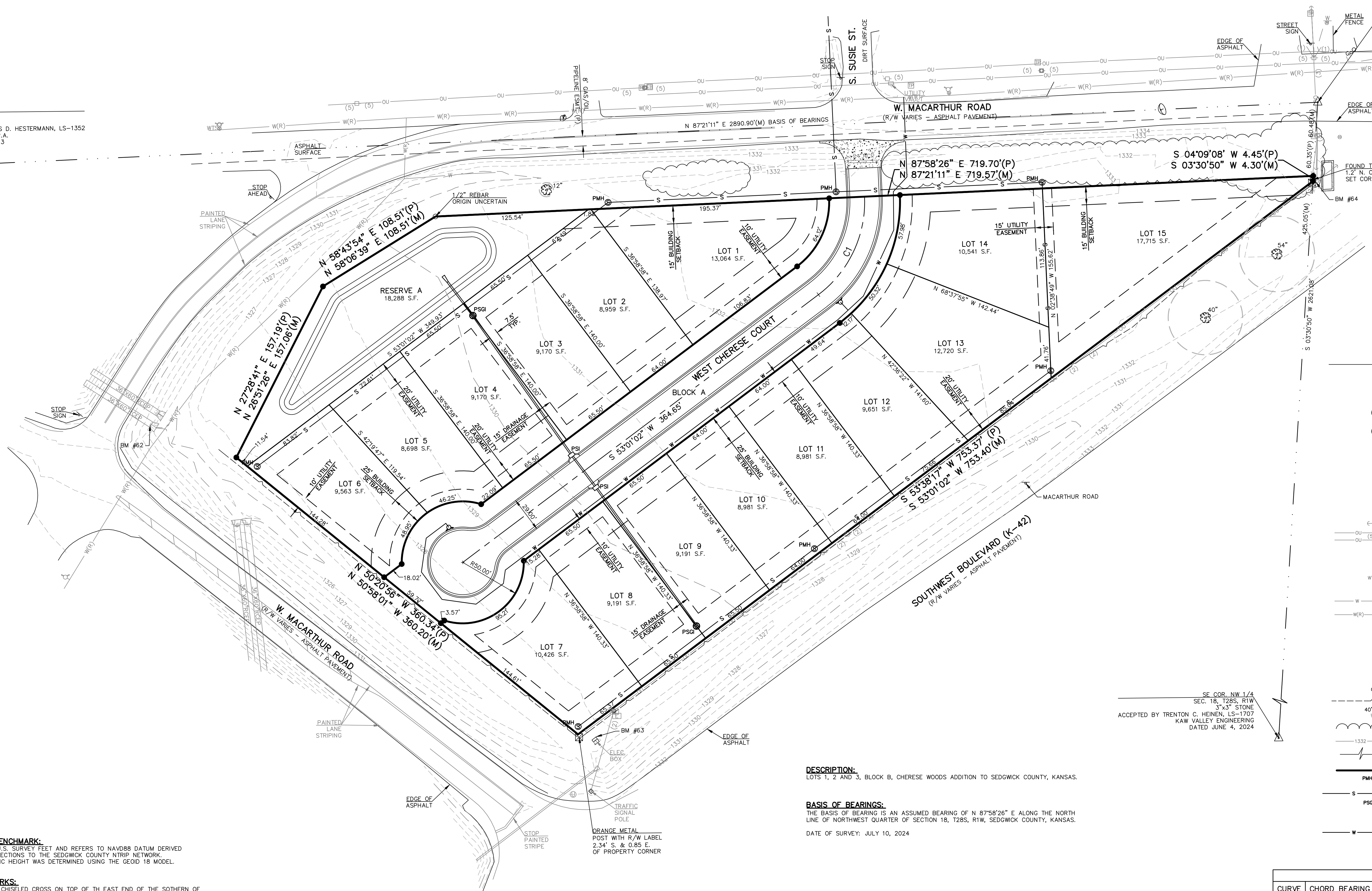


PRELIMINARY PLAT
CHERESE POINT ADDITION
 A REPLAT OF LOTS 1, 2 & 3, BLOCK B, CHERESE WOODS ADDITION,
 SEDGWICK COUNTY, KANSAS

NW COR. NW 1/4
 SEC. 18, T28S, R1W
 1/2" REBAR
 ACCEPTED BY JAMES D. HESTERMANN, LS-1352
 RUGGLES & BOHM P.A.
 DATED APRIL 8, 2013

NE COR. NW 1/4
 SEC. 18, T28S, R1W
 1/2" REBAR
 ACCEPTED BY JAMES D. HESTERMANN, LS-1352
 RUGGLES & BOHM P.A.
 DATED APRIL 8, 2013



- LEGEND**
- △ SECTION CORNER FOUND
 - MONUMENT FOUND
 - 1/2" X 24" REBAR W/KVE CLS-20 CAP SET
 - (P) PLATTED, PER CHERESE WOODS ADDITION, RECORDED AS DOC# 29755823
 - (M) MEASURED
 - ⊠ RIGHT-OF-WAY MARKER SIGN
 - ⊞ UTILITY POLE
 - ⊞ UTILITY POLE W/ TRANSFORMER
 - ⊞ ELECTRIC METER
 - ⊞ ELECTRIC BOX
 - ⊞ UTILITY MANHOLE
 - ⊞ DEADMAN ANCHOR
 - (S)— FOOTPRINT OF OVERHEAD UTILITY - # LINES
 - WATER GATE VALVE
 - ⊞ WATER SIGN
 - ⊞ WATER CATHODIC PROTECTION STATION
 - ⊞ FIRE HYDRANT
 - W — WATER LINE
 - (R)— APPROXIMATE WATER LINE (PER WICHITA GIS MAPS ONLINE)
 - ⊞ SANITARY SEWER MANHOLE
 - ⊞ TELEPHONE PEDESTAL
 - ⊞ MAILBOX
 - ⊞ STREET SIGN
 - ⊞ GATE POST
 - ⊞ CABLE FENCE
 - ⊞ DECIDUOUS TREE W/SIZE & DRIP LINE
 - ⊞ TREE LINE
 - 1332— 1' CONTOUR INTERVAL
 - — LINE NOT DRAWN TO SCALE
 - — COMPLETE ACCESS CONTROL
 - PMH ⊞ PROPOSED SANITARY SEWER MANHOLE
 - S — PROPOSED SANITARY SEWER LINE
 - PSG ⊞ PROPOSED STORM GRATE INLET
 - PSI ⊞ PROPOSED STORM CURB INLET
 - W — PROPOSED WATER LINE

DESCRIPTION:
 LOTS 1, 2 AND 3, BLOCK B, CHERESE WOODS ADDITION TO SEDGWICK COUNTY, KANSAS.

BASIS OF BEARINGS:
 THE BASIS OF BEARING IS AN ASSUMED BEARING OF N 87°58'26" E ALONG THE NORTH LINE OF NORTHWEST QUARTER OF SECTION 18, T28S, R1W, SEDGWICK COUNTY, KANSAS.

DATE OF SURVEY: JULY 10, 2024

DATUM BENCHMARK:
 DATUM IS U.S. SURVEY FEET AND REFERS TO NAVD88 DATUM DERIVED FROM CONNECTIONS TO THE SEDGWICK COUNTY NTRIP NETWORK. ORTHOMETRIC HEIGHT WAS DETERMINED USING THE GEOID 18 MODEL.

BENCHMARKS:
 BM #62: CHISELED CROSS ON TOP OF THE EAST END OF THE SOUTHERN OF A PAIR OF CONCRETE PIPES, NORTH OF THE INTERSECTION OF MACARTHUR ROAD & HEAVEN'S WOOD CIRCLE. ELEV=1328.42 (NAVD88)
 BM #63: CHISELED SQUARE SET ON THE EAST CORNER OF PHONE SWITCH BOX CONCRETE BASE LOCATED NORTH OF THE INTERSECTION OF K-42 HIGHWAY & MACARTHUR ROAD. ELEV=1327.92 (NAVD88)
 BM #64: RAILROAD SPIKE SET IN THE SOUTH FACE OF THE SOUTHERN OF TWO UTILITY POLES ON THE EAST SIDE OF LOT 2, BLOCK B, CHERESE WOOD ADDITION. ELEV=1336.00 (NAVD88)

CURVE TABLE					
CURVE	CHORD BEARING	CHORD	LENGTH	TANGENT	DELTA
C1	N 25°48'21" E	88.71'	92.29'	50.16'	55°39'51"

APPLICANT/DEVELOPER:
 TCRS, LLC
 4340 S. WEST ST.
 WICHITA, KANSAS 67217

SURVEYOR:
 KAW VALLEY ENGINEERING
 TRENTON C. HEINEN, LS 1707
 9139 E. 37TH STREET NORTH
 WICHITA, KANSAS 67226

PRELIMINARY

TRENTON C. HEINEN
 1707
 heinen@kveg.com

9139 E. 37TH STREET NORTH
 WICHITA, KANSAS 67226
 PH. (316) 440-4304
 wh@kveg.com | www.kveg.com

KAW VALLEY ENGINEERING

DATE PREPARED:
 SEPTEMBER 20, 2024

**PRELIMINARY PLAT
 CHERESE POINT ADDITION
 SEDGWICK COUNTY, KANSAS**

KAW VALLEY ENGINEERING, INC. IS AUTHORIZED TO OFFER SURVEYING SERVICES BY KANSAS STATE CERTIFICATE OF AUTHORIZATION NO. LS-20. EXPIRES 12/31/24

PROJECT NO. G24_2983
 DRAWN BY AL
 CHECKED BY TCH
 EPN 2983PRLM
 SHEET 1 OF 1

THIS DRAWING SHALL NOT BE UTILIZED BY ANY PERSON, FIRM, OR CORPORATION IN WHOLE OR IN PART WITHOUT THE SPECIFIC PERMISSION OF KAW VALLEY ENGINEERING, INC.