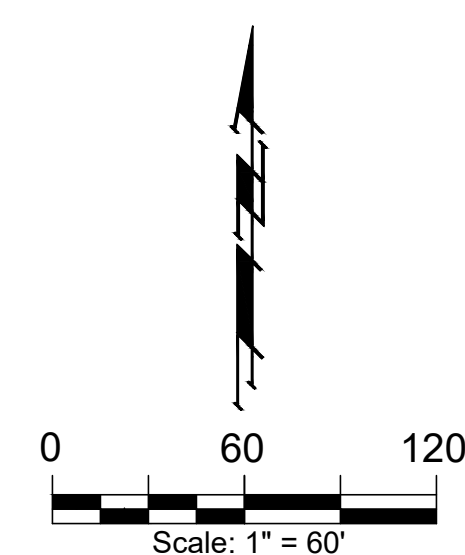
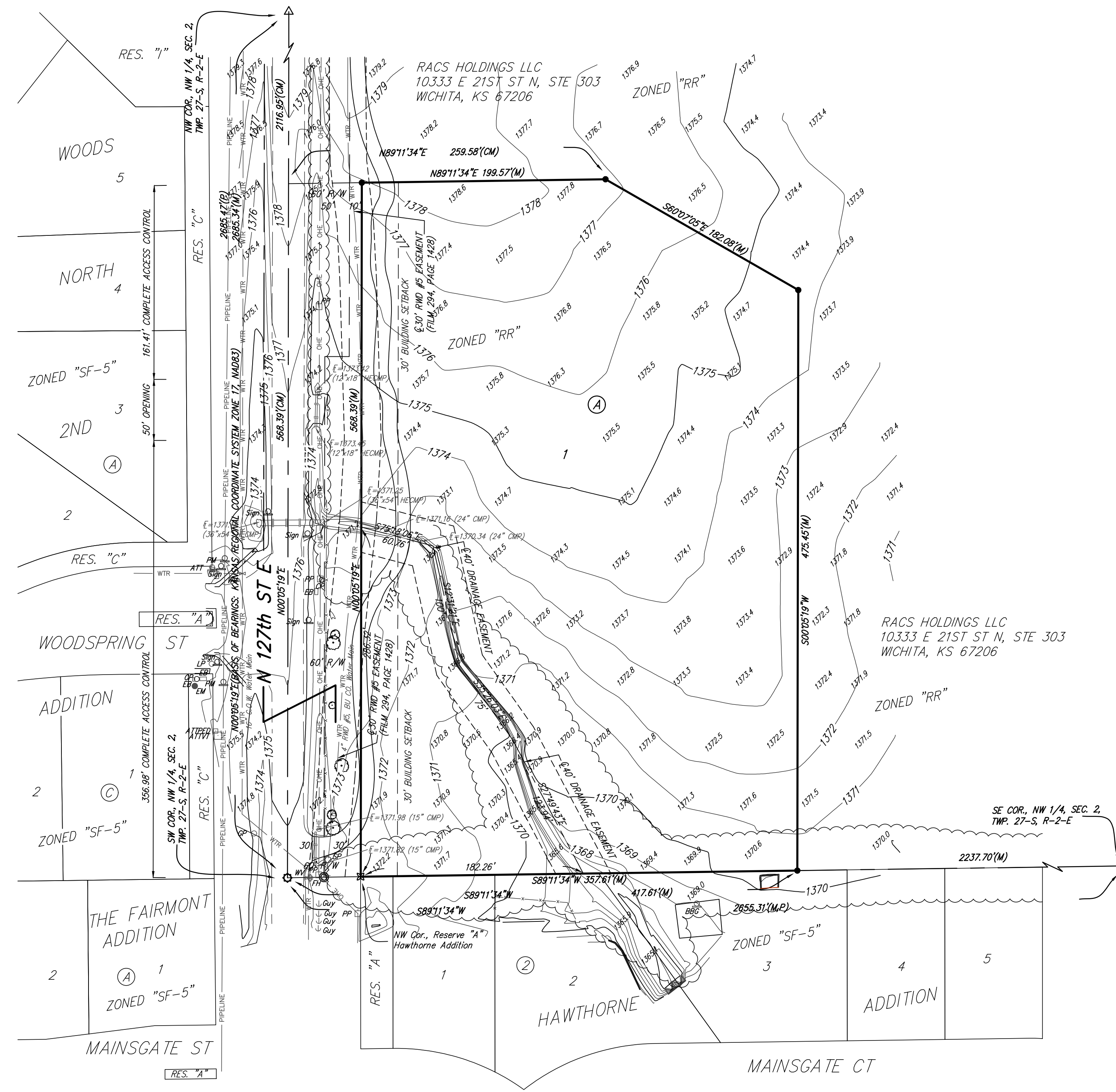


ONE-STEP FINAL PLAT
YOUNG MOON ADDITION
 SEDGWICK COUNTY, KANSAS



Date of Preparation: October 25, 2024
 Date of Topography: September 10, 2024
 Contour Intervals = 1 Foot

- = #4 REBAR W/ "BAUGHMAN" CAP (SET)
 - = #4 REBAR W/ "RED" CAP (FOUND)
 - ⊗ = #4 REBAR W/ "MKEC" CAP (FOUND)
 - = 2" ALUMINUM "SEDGWICK COUNTY" CAP (FOUND)
 - ⊙ = BRASS DISC MARKED "TFLS" (FOUND)
 - △ = 3/4" IRON PIPE (FOUND) (ORIGIN UNKNOWN)
- (M) = MEASURED
 (P) = PLATTED
 (D) = DESCRIBED
 (CM) = CALCULATED FROM MEASURED INFO.

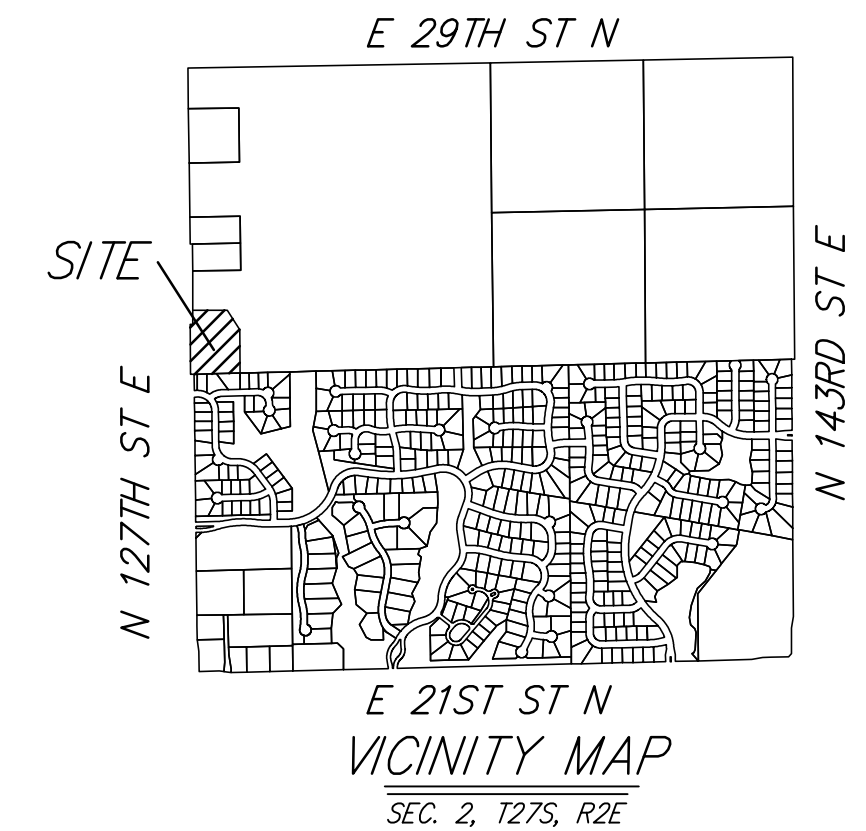
BENCHMARK:
 BM-#1: "x" CHISELED ON NORTH SIDE OF FLUME, WEST SIDE OF N 127TH ST E, 31.7± WEST AND 1623.9± NORTH OF SW COR., NW 1/4, SEC. 2, TWP. 27-S, R-2-E, ELEV. = 1399.74 NAVD88
 BM-#2: SQUARE CHISELED ON NORTH SIDE OF HEADWALL, WEST SIDE OF N 127TH ST E, 22.3± WEST AND 147.5± SOUTH OF NW COR., NW 1/4, SEC. 2, TWP. 27-S, R-2-E, ELEV. = 1382.87 NAVD88

DRAINAGE PLAN NOTE:
 A master drainage plan has been developed for this plat. All drainage easements, rights-of-way, and reserves shall remain at established grades (unless modified with the approval of the applicable City or County Engineer) and shall be unobstructed to allow for the conveyance of stormwater in accordance with the Stormwater Manual.

OWNER:
 RACS HOLDINGS LLC
 10333 E 21ST ST N, STE 303
 WICHITA, KS 67206

CONTRACT PURCHASER:
 MATTHEW A. YOUNG
 2254 W 127TH ST E
 WICHITA, KS 67226

- ATT ⊕ = AT&T Marker
- ATP ⊕ = AT&T Pedestal
- ATVT ⊕ = AT&T Vault
- BBG ⊕ = Basketball Goal
- CP ⊕ = Cable Pedestal
- EB ⊕ = Electric Box
- EM ⊕ = Electric Meter
- FH ⊕ = Fire Hydrant
- Guy ⊕ = Guy Anchor
- LP ⊕ = Light Pole
- PM ⊕ = Pipeline Marker
- PP ⊕ = Power Pole
- Sign ⊕ = Sign
- SP ⊕ = Stand Pipe
- Tree ⊕ = Tree
- WV ⊕ = Water Valve



State of Kansas) SS We, Baughman Company, P.A., Surveyors in aforesaid county and state do hereby certify that we have surveyed and platted "YOUNG MOON ADDITION", Sedgwick County, Kansas and that the accompanying plat is a true and correct exhibit of the property surveyed, described as that part of the Northwest Quarter of Section 2, Township 27 South, Range 2 East of the Sixth Principal Meridian, Sedgwick County, Kansas, as prepared by Baughman Company, P.A., CLS 58, surveyors in aforementioned county and state on October 16, 2024, more particularly described as follows: Beginning at the southwest corner of said Northwest Quarter; thence N00°05'19"E coincident with the west boundary line of said Northwest Quarter, a distance of 568.39 feet; thence N89°11'34"E parallel with the south boundary line of said Northwest Quarter, a distance of 259.58 feet; thence S60°07'05"E, a distance of 182.08 feet; thence S00°05'19"W parallel with the west boundary line of said Northwest Quarter, a distance of 475.45 feet to a point on the south boundary line of said Northwest Quarter; thence S89°11'34"W coincident with the south boundary line of said Northwest Quarter, a distance of 417.61 feet to the point of beginning.

Existing public easements, building setbacks, access controls, and dedications, if any, being vacated by virtue of K.S.A. 12-512b, as amended.

All being situated in the Northwest Quarter of Section 2, Township 27 South, Range 2 East of the Sixth Principal Meridian, Sedgwick County, Kansas.

Baughman Company, P.A.

Jonathan C. Hubbell, P.S. #1680, Surveyor

Know all men by these presents that we, the undersigned, have caused the land in the surveyors certificate to be platted into a Lot, a Block, and a Street to be known as "YOUNG MOON ADDITION", Sedgwick County, Kansas. The drainage easement is hereby granted to the public as indicated for drainage purposes. No signs, light poles, private drainage systems, masonry fences, masonry trash enclosures or other structures shall be located within public utility easements unless a Use of Easement Permit is obtained from the City of Wichita Public Works & Utilities Department. The street is hereby dedicated to and for the use of the public. Access controls shall be as depicted on the face of the plat and are hereby granted to the appropriate governing body.

Matthew A. Young

State of Kansas) SS The foregoing instrument acknowledged before me, this _____ day of _____, 2024, by Matthew A. Young, a single person.

Notary Public

My App't. Exp. _____

This plat of "YOUNG MOON ADDITION", Sedgwick County, Kansas has been submitted to and approved by the Wichita-Sedgwick County Metropolitan Area Planning Commission, Wichita, Kansas.

Dated this _____ day of _____, 2024.
 Wichita-Sedgwick County Metropolitan Area Planning Commission

Bryan K. Frye, Chairman

Scott A. Wadle, Secretary

This plat approved and all dedications shown hereon accepted by the City Council of the City of Wichita, Kansas, this _____ day of _____.

Lily Wu, Mayor, City of Wichita

Jamie Buster, City Clerk

This plat approved and all dedications shown hereon accepted by the Board of Commissioners of Sedgwick County, Kansas, this _____ day of _____.

Ryan Baty, Fourth District, Chairman

Kelly B. Arnold, County Clerk

Reviewed in accordance with K.S.A. 58-2005 on this _____ day of _____.

Tricia L. Robello, P.S. #1246, Deputy County Surveyor, Sedgwick County, Kansas

Entered on transfer record this _____ day of _____.

Kelly B. Arnold, County Clerk

State of Kansas) SS This is to certify that this plat has been filed for record in the office of the Register of Deeds, this _____ day of _____, at _____ o'clock _____M; and is duly recorded.

Tonya Buckingham, Register of Deeds

Kenly Zehring, Deputy

YOUNG MOON ADDITION

October 25, 2024
 **BAUGHMAN COMPANY**
 315 Ellis St. Wichita, KS 67211 316-262-7271
 BaughmanCo.com