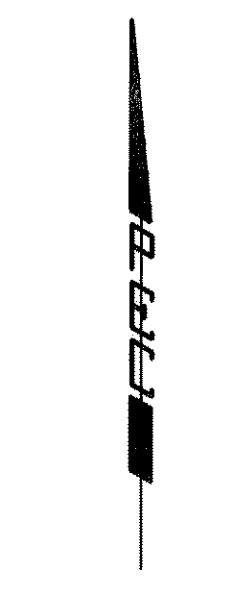
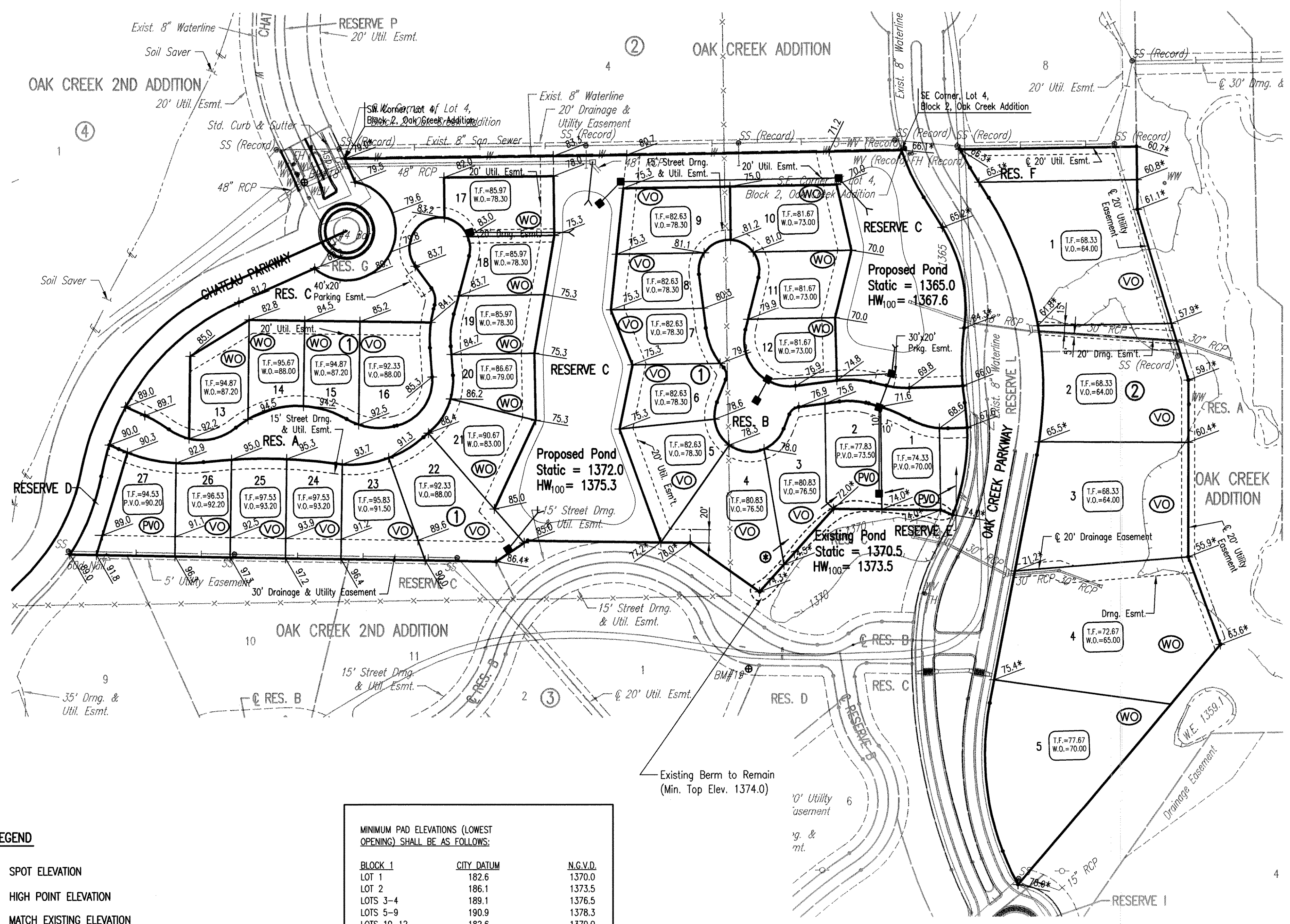


OAK CREEK 3RD

AN ADDITION TO WICHITA, SEDGWICK COUNTY, KANSAS

FOUR-CORNER PLAN

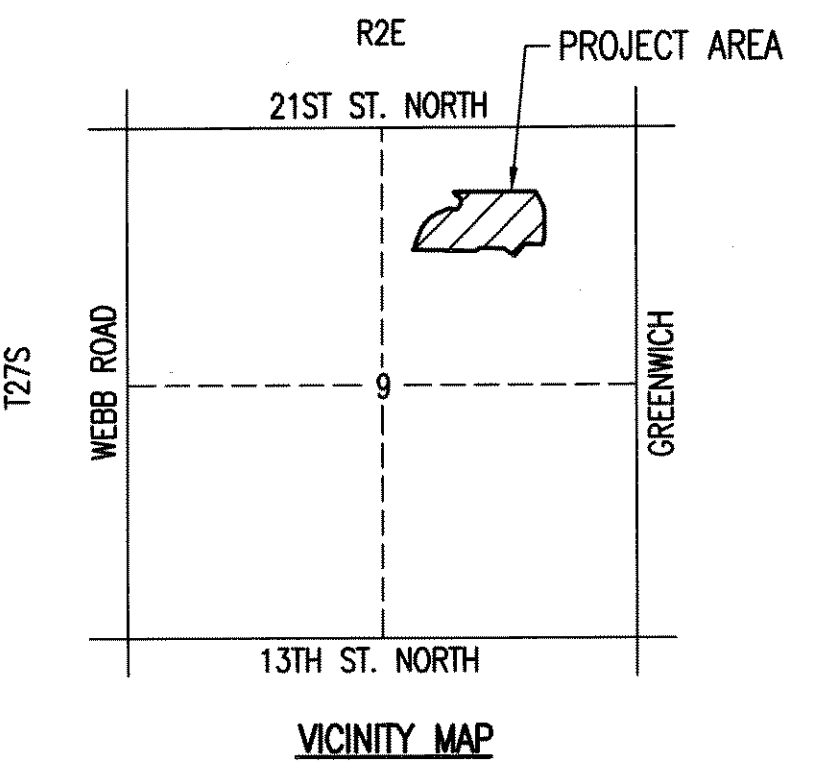


SCALE: 1" = 100'

• = 1/2" REBAR W/PEC CAP UNLESS OTHERWISE NOTED

BENCHMARKS BM

- BM #209
Chiseled "d" on NW corner of traffic signal base, at SW corner of Greenwich Road & 21st Street North
Elev. = 1363.54 N.G.V.D.
176.14 City Datum
- BM #215
Chiseled "+" in top center curb inlet 600' W of Greenwich Road on S side of 21st Street North.
Elev. = 1363.265 N.G.V.D.
175.865 City Datum
- BM #216
Chiseled "d" on S end of curb & gutter at C of Median, Target entrance on N side of 21st Street North 1400' ± W of Greenwich Road.
Elev. = 1364.55 N.G.V.D.
177.15 City Datum



LEGEND

- SPOT ELEVATION
- HIGH POINT ELEVATION
- MATCH EXISTING ELEVATION
- STORM SEWER AND INLET
- STORM SEWER AND MANHOLE
- VIEW-OUT BASEMENT
- VIEW-OUT BASEMENT
- VIEW-OUT BASEMENT

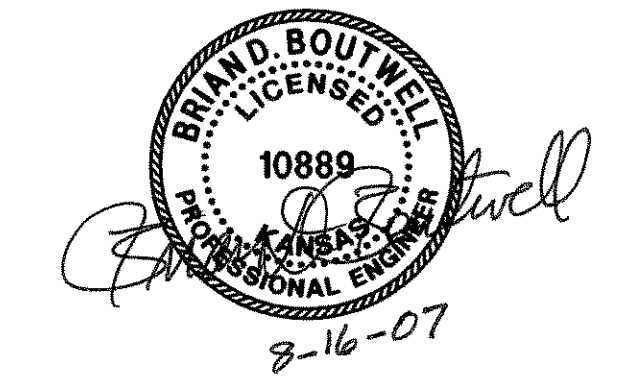
ADD 1300 TO ELEVATIONS FOR N.G.V.D. DATUM.

MINIMUM PAD ELEVATIONS (LOWEST OPENING) SHALL BE AS FOLLOWS:

BLOCK	CITY DATUM	N.G.V.D.
BLOCK 1	LOT 1	182.6
	LOT 2	186.1
	LOTS 3-4	189.1
	LOTS 5-9	190.9
	LOTS 10-12	182.6
	LOTS 17-21	190.9
BLOCK 2	LOTS 1-2	176.6
	LOTS 3-4	175.6
		1370.0

Ⓢ Backyard drainage protected by private cross-lot drainage agreement

Saved 08-15-2007 9:15:02 AM by BLS
 Plot Scale 1:100 08-16-2007 10:49:09 AM by BLS
 G:\2004\04115\004\LD\DWG\04115-004-4-Corner



REVISED 10-5-06