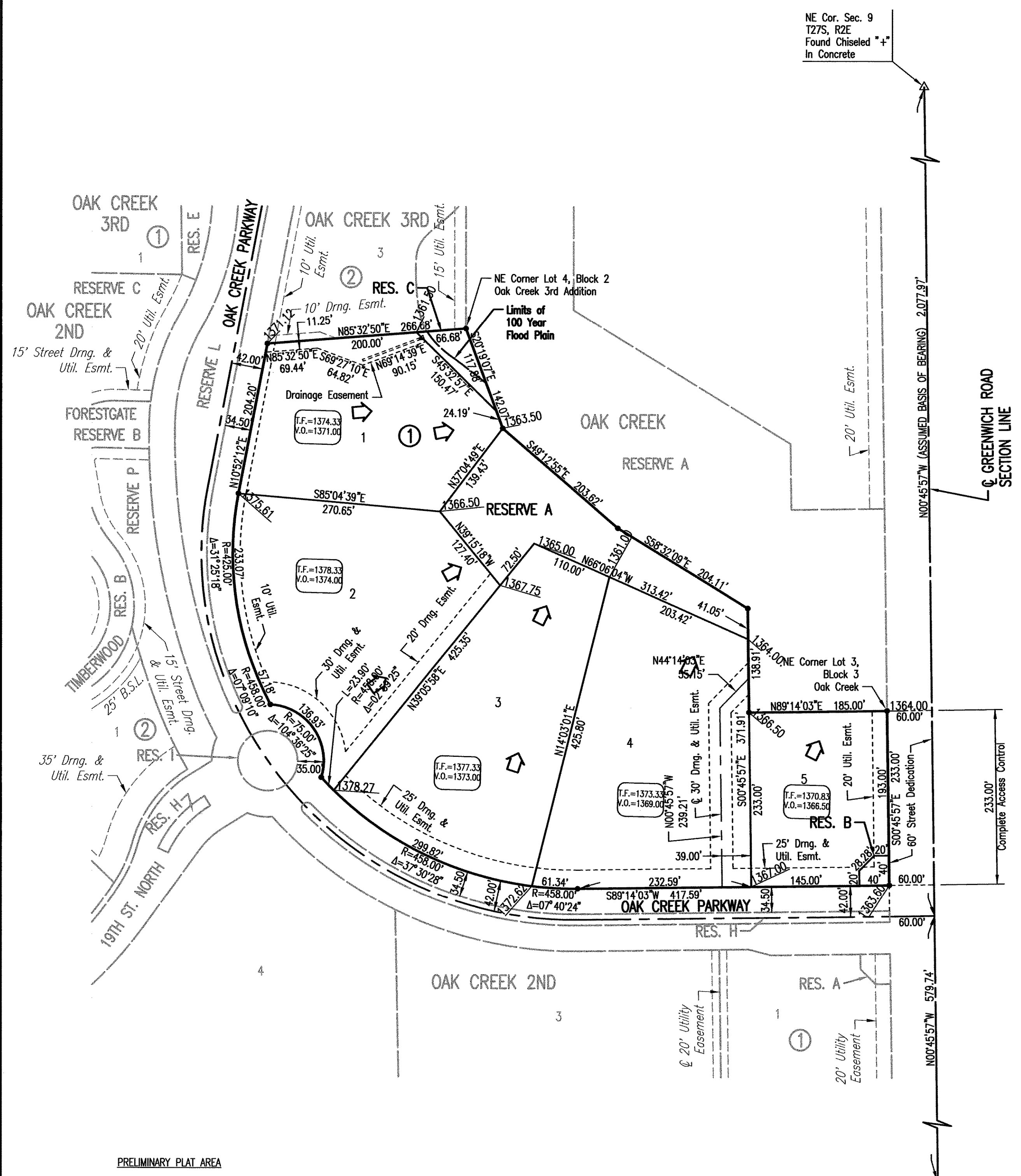


OAK CREEK 4TH

AN ADDITION TO WICHITA, SEDGWICK COUNTY, KANSAS

4-CORNER PLAN



MINIMUM OPENING ELEVATION:

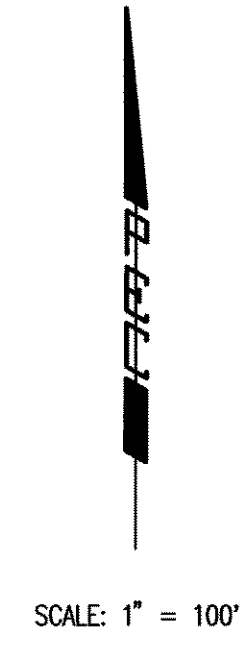
Lot 1 - 1361.8 NGVD
 Lot 2 - 1361.2 NGVD
 Lot 3 - 1360.8 NGVD
 Lot 4 - 1360.8 NGVD
 Lot 5 - 1360.5 NGVD

PRELIMINARY PLAT AREA
 GROSS ACREAGE = 9.5 ACRES
 DATE OF PREPARATION: MAY 03, 2007
 DATE OF TOPOGRAPHIC SURVEY: MARCH 2004
 OWNER: SLAWSON COMMERCIAL PROPERTIES, LLC
 727 N. WACO, SUITE 400
 WICHITA, KS 67203
 SUBDIVIDER: PROFESSIONAL ENGINEERING CONSULTANTS, P.A.
 303 S. TOPEKA
 WICHITA, KS 67202

BENCHMARKS *BM*

BM #206
 "T" Post 5' W of N gate post to field entrance, W side of
 Greenwich Road, 700' ± N of railroad tracks and 500' ± S of
 RCB culvert.
 Elev. = 1365.87 N.G.V.D.
 178.47 City Datum

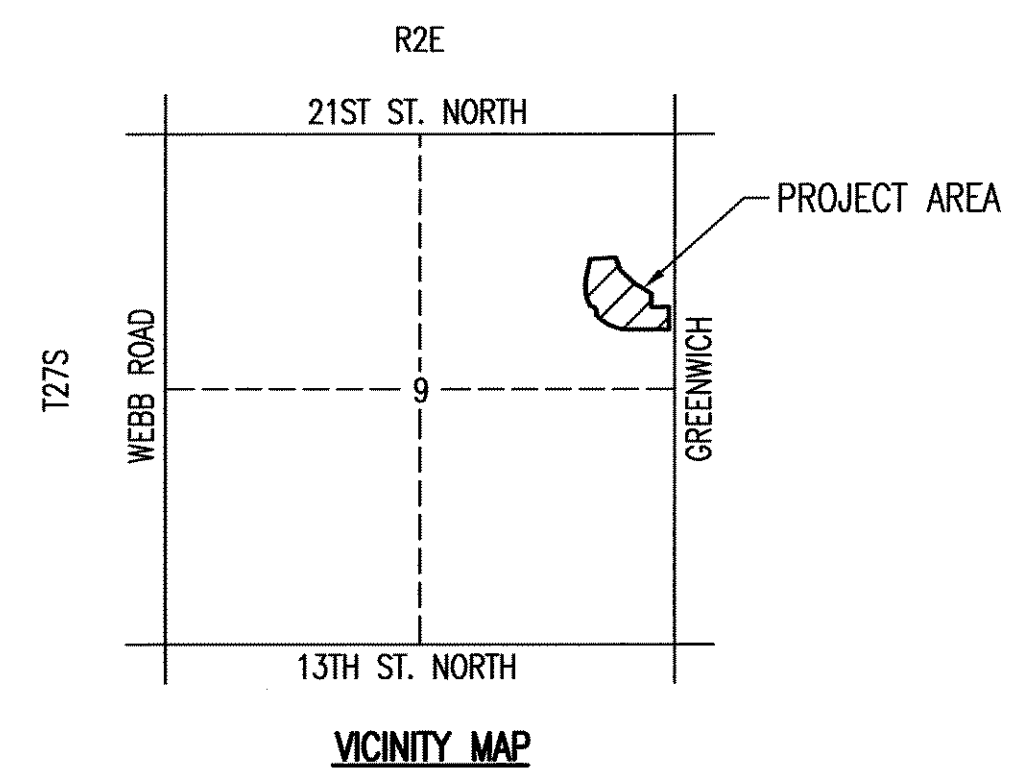
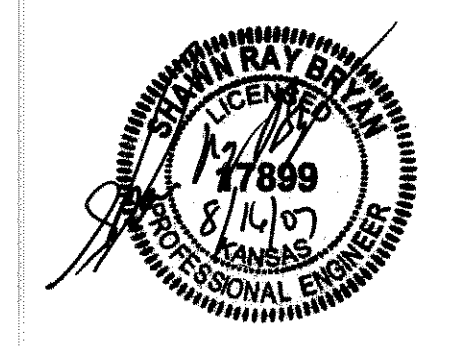
BM #207
 Chiseled "d" on top of concrete headwall on NW corner of RCB
 under Greenwich Road, 1100' ± S of 21st Street North.
 Elev. = 1360.065 N.G.V.D.
 172.665 City Datum



• = 1/2" REBAR W/PEC CAP UNLESS OTHERWISE NOTED
 Δ = SECTION CORNER

LEGEND

- Coniferous Tree
- Deciduous Tree
- Utility Pole
- Power Pole
- Gate Post
- Mailbox
- Sign
- Sanitary Sewer Manhole
- Deadman
- Water Valve
- Fire Hydrant
- Blowoff Valve
- Water Well
- Easement
- Sanitary Sewer Force Main
- Guard Rail
- Overhead Electric
- Sanitary Sewer
- Waterline
- Fence



August 7, 2007

Professional Engineering Consultants, P.A.
 303 S. TOPEKA • WICHITA, KANSAS 67202
 316-262-2691 • FAX 316-262-3003

Saved: 08-16-2007 11:01:18 AM by SRB
 Plot Scale: 1:100 08-16-2007 11:11:20 AM by SRB
 G:\2004\04115\04115-004_Corner Plat