



# MOSSMAN SUBSTATION ADDITION

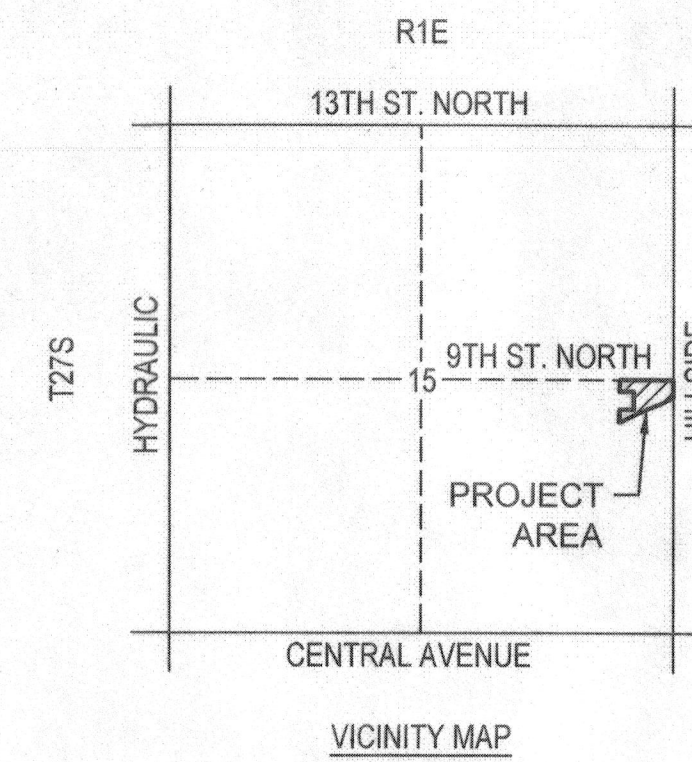
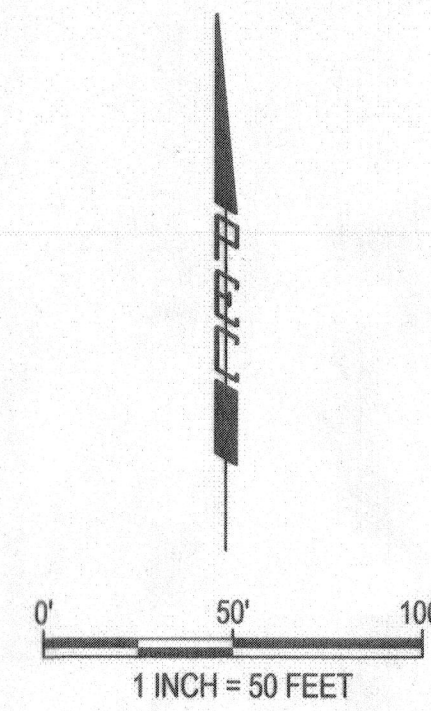
WICHITA, SEDGWICK COUNTY, KANSAS

SE1/4 SECTION 15, TOWNSHIP 27 SOUTH, RANGE 1 EAST OF THE 6TH PRINCIPAL MERIDIAN

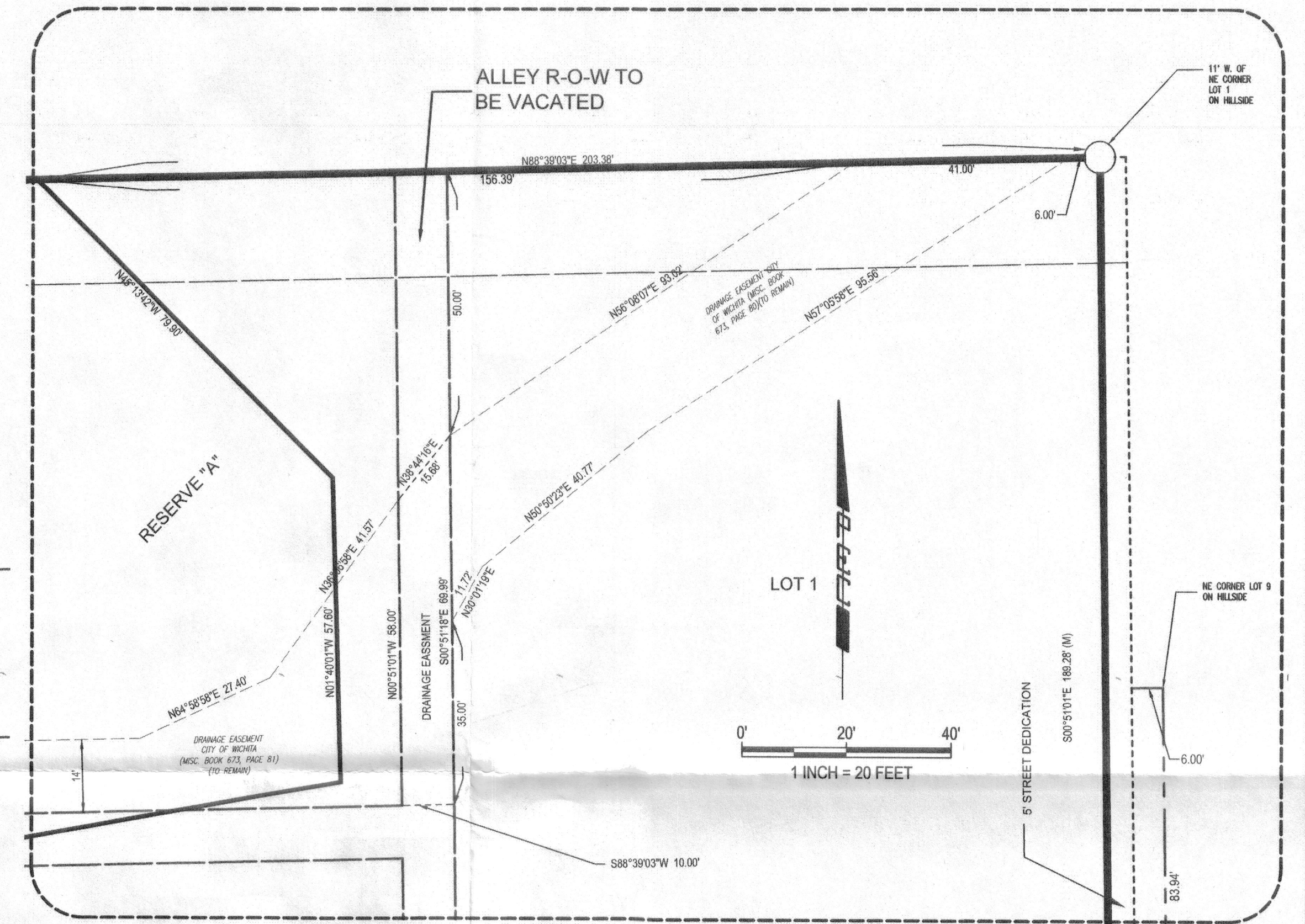
## FINAL PLAT

### PLAT LEGEND

- ▲ SECTION CORNER, AS NOTED
- SET 1/2" REBAR WITH PEC CAP
- U/E UTILITY EASEMENT
- W/E WATER EASEMENT
- S/E SIDEWALK EASEMENT
- (M) MEASURED
- (R) RECORD
- (P) PLATTED
- (C.A.C.) COMPLETE ACCESS CONTROL

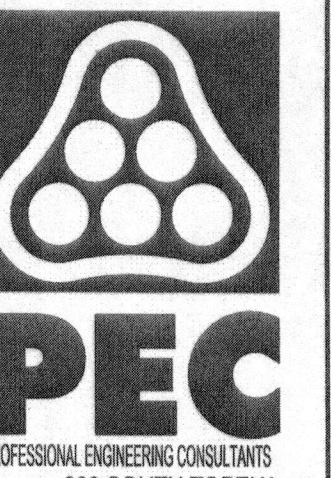


**BENCH MARKS**  
 BM-201  
 ELEVATION: 1,341.82 (NAVD 88)  
 SQUARE CUT AT SPLIT FOR REDBUD TRAIL 4' +/- SE OF GUARD POST  
 22' +/- W OF HILLSIDE AVENUE  
 BM-202  
 ELEVATION: 1,325.14 (NAVD 88)  
 SQUARE CUT TOP CURB MID POINT OF CURVE AT SW CORNER 9TH STREET  
 AND CHAULTAUQUA AVENUE



CROSS-HATCHING LEGEND	
	FEMA REGULATORY FLOODWAY
	FEMA FLOOD ZONE X (0.2% ANNUAL CHANCE)
	FEMA FLOOD ZONE AE (1% ANNUAL CHANCE)

SAVED 8/23/2024 2:27:27 PM BY BILL SEXSON  
 PLOTTED 8/23/2024 2:30:07 PM BY BILL SEXSON  
 U:\TOPEKA\2023\23903001\3\PEC\DRAWINGS\PLAT\239030-013 MOSSMAN SUBSTATION FINAL.DWG



PROFESSIONAL ENGINEERING CONSULTANTS  
 303 SOUTH TOPEKA  
 WICHITA, KS 67202  
 316-262-2691 www.pec1.com