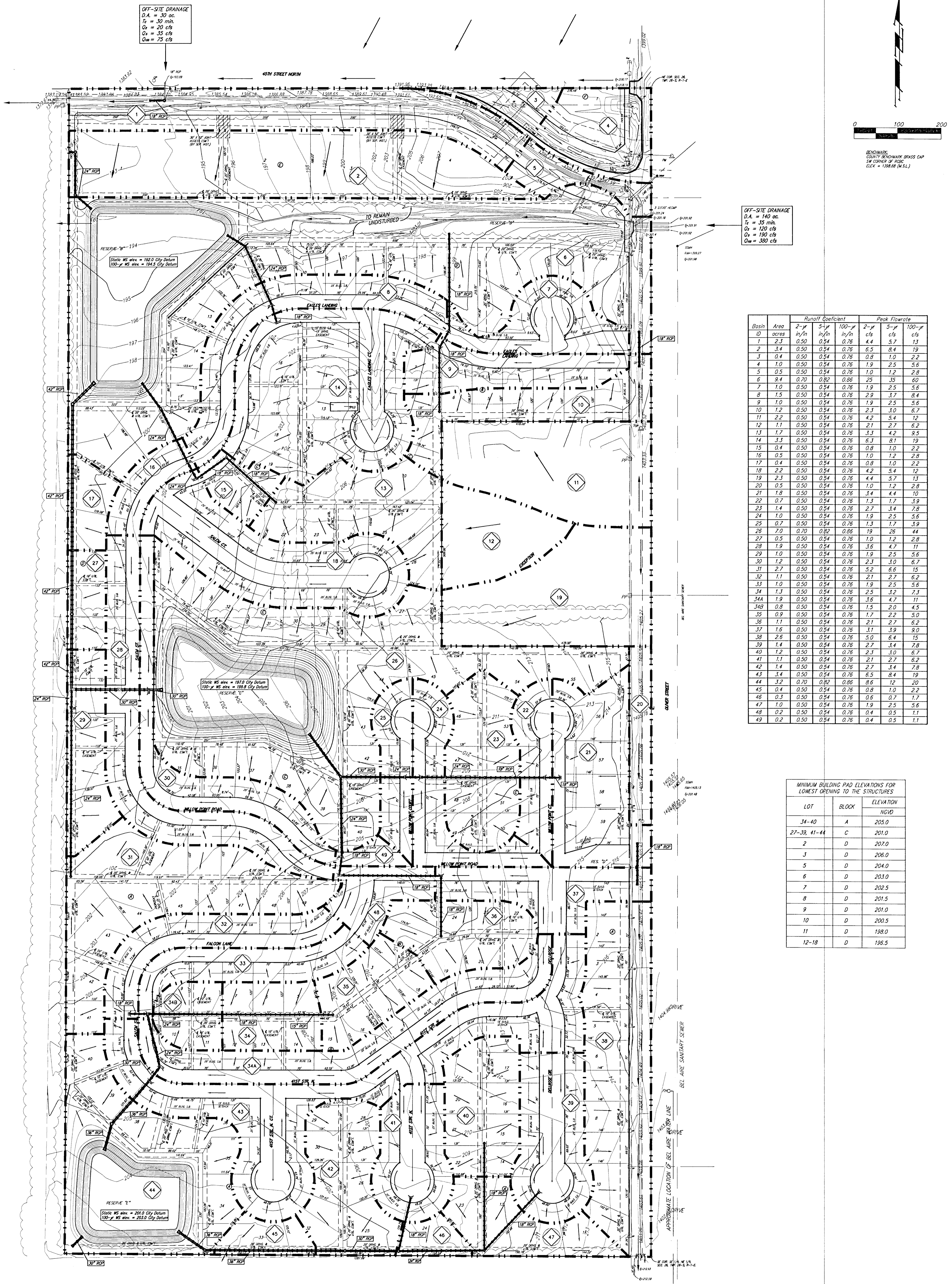


DRAINAGE PLAN EAGLES LANDING AT NORTH OLIVER WICHITA, SEDGWICK COUNTY, KANSAS



Basin ID	Area (acres)	Runoff Coefficient			Peak Flowrate (cfs)		
		2-yr	5-yr	100-yr	2-yr	5-yr	100-yr
1	2.3	0.50	0.54	0.75	4.4	5.7	13
2	3.4	0.50	0.54	0.75	6.5	8.4	19
3	0.4	0.50	0.54	0.75	0.8	1.0	2.2
4	1.0	0.50	0.54	0.75	1.9	2.5	5.6
5	0.5	0.50	0.54	0.75	1.0	1.2	2.8
6	0.4	0.70	0.87	0.88	2.9	3.9	9.0
7	1.0	0.50	0.54	0.75	1.9	2.5	5.6
8	1.5	0.50	0.54	0.75	2.9	3.7	8.4
9	1.0	0.50	0.54	0.75	1.9	2.5	5.6
10	1.2	0.50	0.54	0.75	2.3	3.0	6.7
11	2.2	0.50	0.54	0.75	4.2	5.4	12
12	1.1	0.50	0.54	0.75	2.1	2.7	6.2
13	1.7	0.50	0.54	0.75	3.7	4.2	9.5
14	1.3	0.50	0.54	0.75	6.1	8.1	19
15	0.4	0.50	0.54	0.75	0.8	1.0	2.2
16	0.5	0.50	0.54	0.75	1.0	1.2	2.8
17	0.4	0.50	0.54	0.75	0.8	1.0	2.2
18	0.2	0.50	0.54	0.75	0.4	0.5	1.1
19	2.3	0.50	0.54	0.75	4.4	5.7	13
20	0.5	0.50	0.54	0.75	1.0	1.2	2.8
21	1.8	0.50	0.54	0.75	3.4	4.4	10
22	0.7	0.50	0.54	0.75	1.3	1.7	3.9
23	1.4	0.50	0.54	0.75	2.7	3.4	7.8
24	1.0	0.50	0.54	0.75	1.9	2.5	5.6
25	0.7	0.50	0.54	0.75	1.3	1.7	3.9
26	7.0	0.70	0.87	0.88	19	26	44
27	0.5	0.50	0.54	0.75	1.0	1.2	2.8
28	1.9	0.50	0.54	0.75	3.6	4.7	11
29	1.0	0.50	0.54	0.75	1.9	2.5	5.6
30	1.2	0.50	0.54	0.75	2.3	3.0	6.7
31	2.7	0.50	0.54	0.75	5.2	6.6	15
32	1.1	0.50	0.54	0.75	2.1	2.7	6.2
33	1.0	0.50	0.54	0.75	1.9	2.5	5.6
34	1.3	0.50	0.54	0.75	2.5	3.2	7.3
34A	1.9	0.50	0.54	0.75	3.6	4.7	11
35	0.8	0.50	0.54	0.75	1.5	2.0	4.5
35	0.9	0.50	0.54	0.75	1.7	2.2	5.0
36	1.1	0.50	0.54	0.75	2.1	2.7	6.2
37	1.6	0.50	0.54	0.75	3.1	3.9	9.0
38	2.6	0.50	0.54	0.75	5.0	6.4	15
39	1.4	0.50	0.54	0.75	2.7	3.4	7.8
40	1.2	0.50	0.54	0.75	2.3	3.0	6.7
41	1.1	0.50	0.54	0.75	2.1	2.7	6.2
42	1.4	0.50	0.54	0.75	2.7	3.4	7.8
43	3.4	0.50	0.54	0.75	6.5	8.4	19
44	3.2	0.70	0.87	0.88	8.6	12	20
45	0.4	0.50	0.54	0.75	0.8	1.0	2.2
46	0.3	0.50	0.54	0.75	0.6	0.7	1.7
47	1.0	0.50	0.54	0.75	1.9	2.5	5.6
48	0.2	0.50	0.54	0.75	0.4	0.5	1.1
49	0.2	0.50	0.54	0.75	0.4	0.5	1.1

LOT	BLOCK	ELEVATION (NGVD)
34-40	A	205.0
27-33, 41-44	C	201.0
2	D	207.0
3	D	206.0
5	D	204.0
6	D	203.0
7	D	202.5
8	D	201.5
9	D	201.0
10	D	200.5
11	D	198.0
12-18	D	195.5

NOTE: The proposed drainage plan provided herein is a generally defined plan to follow for design. It is recognized and assumed that upon the final design of street and storm sewer arrangements within this plan that the designer will modify or alter the general drainage plan as necessary in order to implement the installation of the improvements to obtain the most economical design and construction possible.