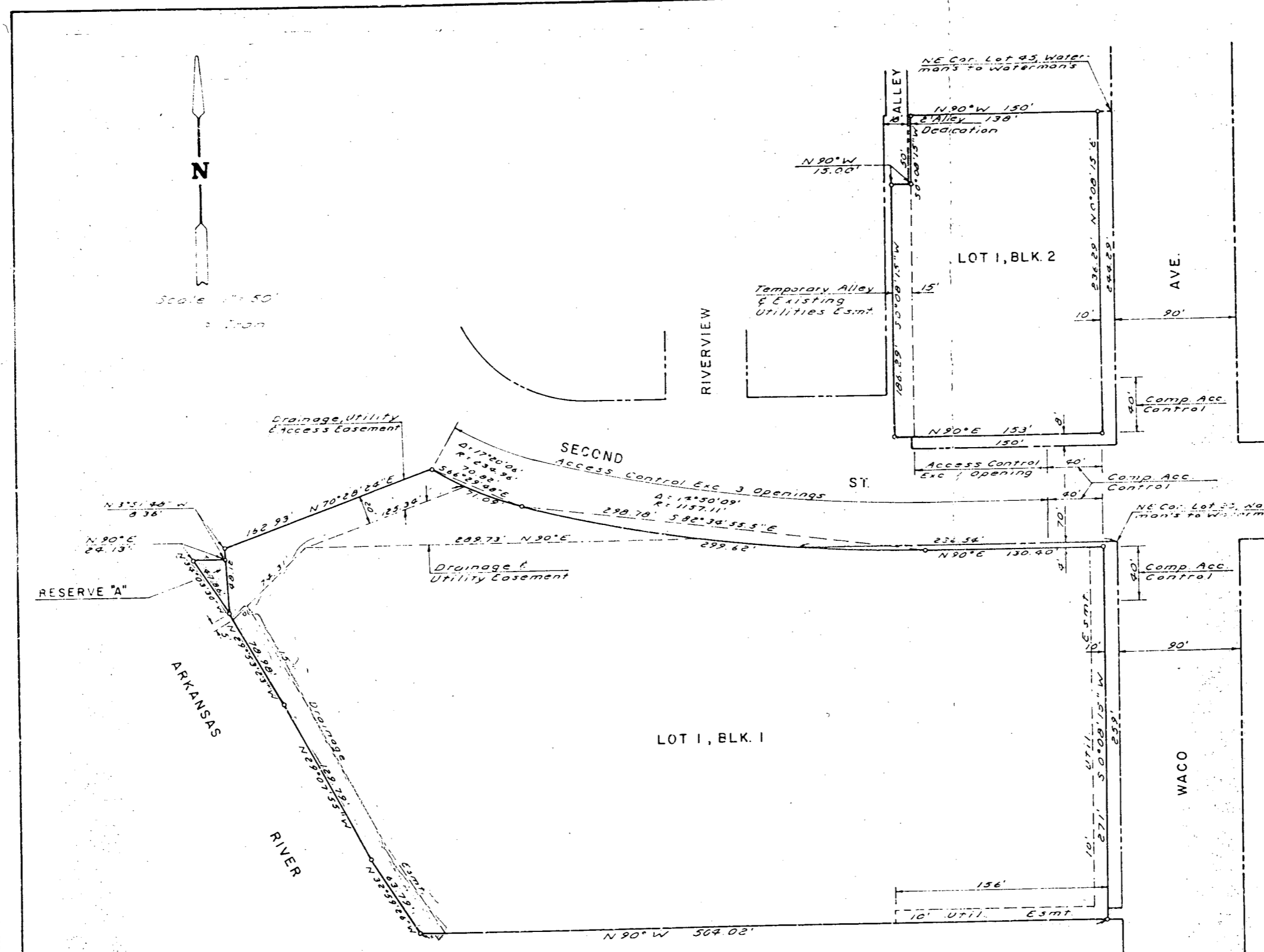


FARM CREDIT BANKS OF WICHITA, KANSAS



Know all men by these presents that we, the undersigned, have caused the land described in the surveyors certificate to be platted into lots, blocks, streets, alley and a reserve to be known as "FARM CREDIT BANKS OF WICHITA ADDITION" Wichita, Kansas. Reserve "A" is hereby dedicated to the public for drainage and for riverbank maintenance, beautification and access purposes. The drainage easement along the west side of Lot 1, Blk 1 is being granted for drainage and riverbank maintenance and beautification, no structure shall be built within said easement nor shall any change of grade be made without the permission of the Wichita Valley Center Flood Control Office or their successors at office. The temporary alley and existing utilities easement in Blk 2 is hereby granted to the public for access purposes and to cover existing utilities. No additional utilities shall be installed within said easement. The easements are hereby granted as indicated for the construction and maintenance of public utilities. The access easement is hereby granted as indicated to provide access to the Arkansas River for maintenance purposes. The streets and alley are hereby dedicated to and for the use of the public. All abutters rights of access to Waco Ave. over the north 40 feet of Lot 1, Blk 1, and the south 40 feet of Lot 1, Blk 2, are hereby granted to the City of Wichita, Kansas. All abutters rights of access to Second St. are hereby granted to the City of Wichita, Kansas, except, however, that Lot 1, Blk 1 shall have access to Second St. at three locations over the west 461.11 feet thereof, and Lot 1, Blk 2 shall have access to Second St. at one location over the west 98 feet of the east 138 feet thereof, said locations to be determined by the City Engineer.

State of Kansas } S.S. We, Baughman Company, P.A.,
 Sedgwick County } Surveyors in aforesaid county and state, do hereby
 certify that we have surveyed and platted "FARM
 CREDIT BANKS OF WICHITA ADDITION", Wichita, Kansas,
 and that the accompanying plat is a true and correct
 exhibit of the property surveyed, described as a
 replat of Lots 45 thru 45, odd lots only, on Waco,
 and Reserve "A" all in Waterman's Addition to Water-
 man's Addition to Wichita, Sedgwick County, Kansas,
 located in the NE 1/4 of Sec. 20, T27S, R1E, together with
 the east 13 feet of the north-south alley along the

Federal Intermediate Credit Bank of Wichita
Charles N. Thorpe
 Charles N. Thorpe
 Federal Land Bank of Wichita
Jack K. Perry
 Jack K. Perry, Jr. Vice President

This
 OF WICHITA
 has been
 by the
 politan
 Wichita,
 of July
 Wichita
 Area Pla
 Tri
 dication
 by the
 Wichita
 July
 Th
 dication
 by the
 Sedgwick
 day of