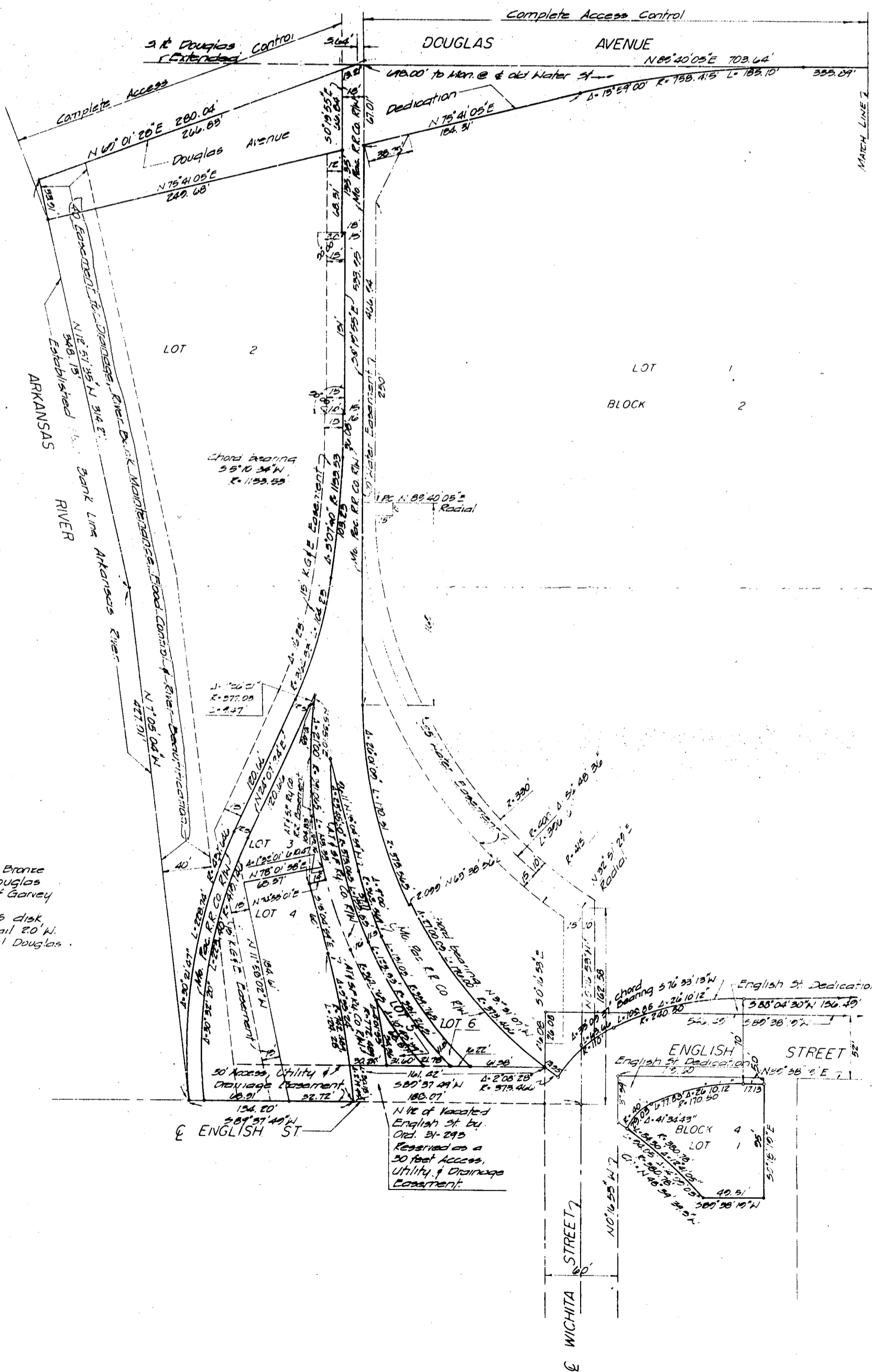


**CIVIC CENTER SOUTH ADDITION**  
 WICHITA, SEDGWICK COUNTY, KANSAS.



Scale 1" = 40'  
 B.M. 113.04 SE Cor. Bronze  
 Plaque N. Side Douglas  
 Ave. & So. of ctr. of Garvey  
 Bldg.  
 B.M. 113.925 USGS disk  
 Top of S handrail 20' N.  
 of E. end of rail Douglas  
 Ave. Bridge.