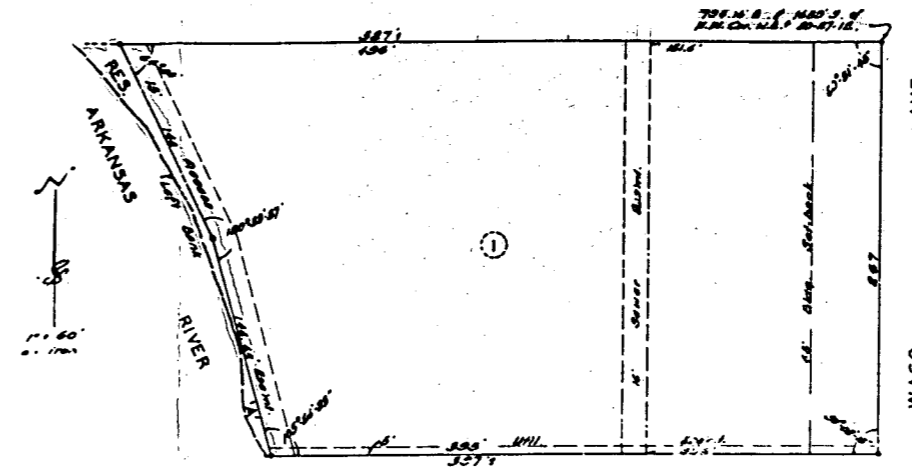


CHURCH PARK ADDITION

TO WICHITA KANSAS



State of Kansas } s.s. We Baughman Company,
Sedgewick County } Surveyors, do hereby certify that we have surveyed and platted "CHURCH PARK ADDITION" to Wichita, Kansas, and that the accompanying plat is a true and correct exhibit of the property surveyed described as and being a Replat of Lots 17-19-21 & 23 on Waco Avenue Watermans Addition to Watermans Addition Wichita, Kansas.

Baughman Company Surveyors

Paul J. Baughman

Know all men by these presents that we Rounds & Porter Lumber Co. Inc. a corporation by Merle H. Nicholson, Vice-President and Claude W. Peake, Secretary, have caused the land described in the surveyors certificate to be platted into a lot and a Reserve to be known as "CHURCH PARK ADDITION" to Wichita, Kansas. Easements are hereby granted for the construction and maintenance of all public utilities and for other express purposes as indicated. Reserve "A" is here dedicated to the City of Wichita for drainage, river bank maintenance, flood control and river beautification purposes.

Rounds & Porter Lumber Co. Inc.

Merle H. Nicholson Vice-Pres.

Claude W. Peake Secretary

State of Kansas } s.s. Be it remembered that Sedgewick County } on this 31st day of May 1967 before me a notary public in and for said county and state came Merle H. Nicholson, Vice-President and Claude W. Peake, Secretary of Rounds & Porter Lumber Co. Inc., to me known to be the same persons who executed the foregoing instrument of writing and duly acknowledged the execution of the same. In testimony whereof, I have hereunto set my hand and affixed my not. seal this 31st day and year above writ. Ten.

Richard D. McCall Notary Public

My Comm. Exp. 22nd, 1972

This plat of "CHURCH PARK ADDITION" to Wichita, Kansas has been approved by the Wichita-Sedgewick County Metropolitan Area Planning Commission Wichita, Kansas, and is here transmitted to the Board of Commissioners of the City of Wichita, Kansas with the recommendation that such plat be approved as proposed. Dated this 25th day of

MAY 1967.
Wichita-Sedgewick County Metropolitan Area Planning Commission.

Shelby H. Kief Chairman

C. B. Bialby Secretary

Approved by the Board of City Commissioners this 13th day of June 1967.

William J. Johnson President of the Board of Commissioners

Ralph L. Eberly City Clerk

Approved by the Board of County Commissioners this 27th day of June 1967.

John L. Lacy Chairman

Edmund J. ... Commissioner

Carl ... Commissioner

Marie ... County Clerk

Entered on the records of Sedgewick County this 27th day of June 1967.

12819 Marie ... County Clerk

State of Kansas } s.s. This is to certify that this plat was filed for record in the office of the Registrar of Deeds this 27th day of June 1967, at 11:45 o'clock A.M., and is duly recorded.

Arthur E. Downing Registrar of Deeds

Chas. ... Deputy