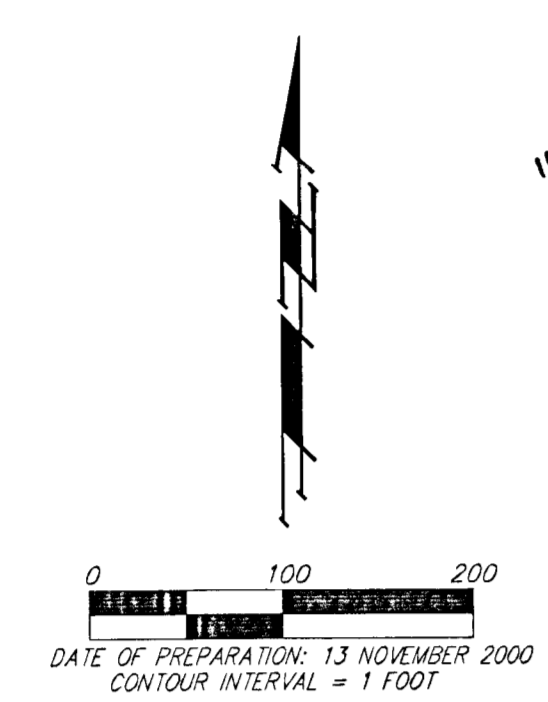
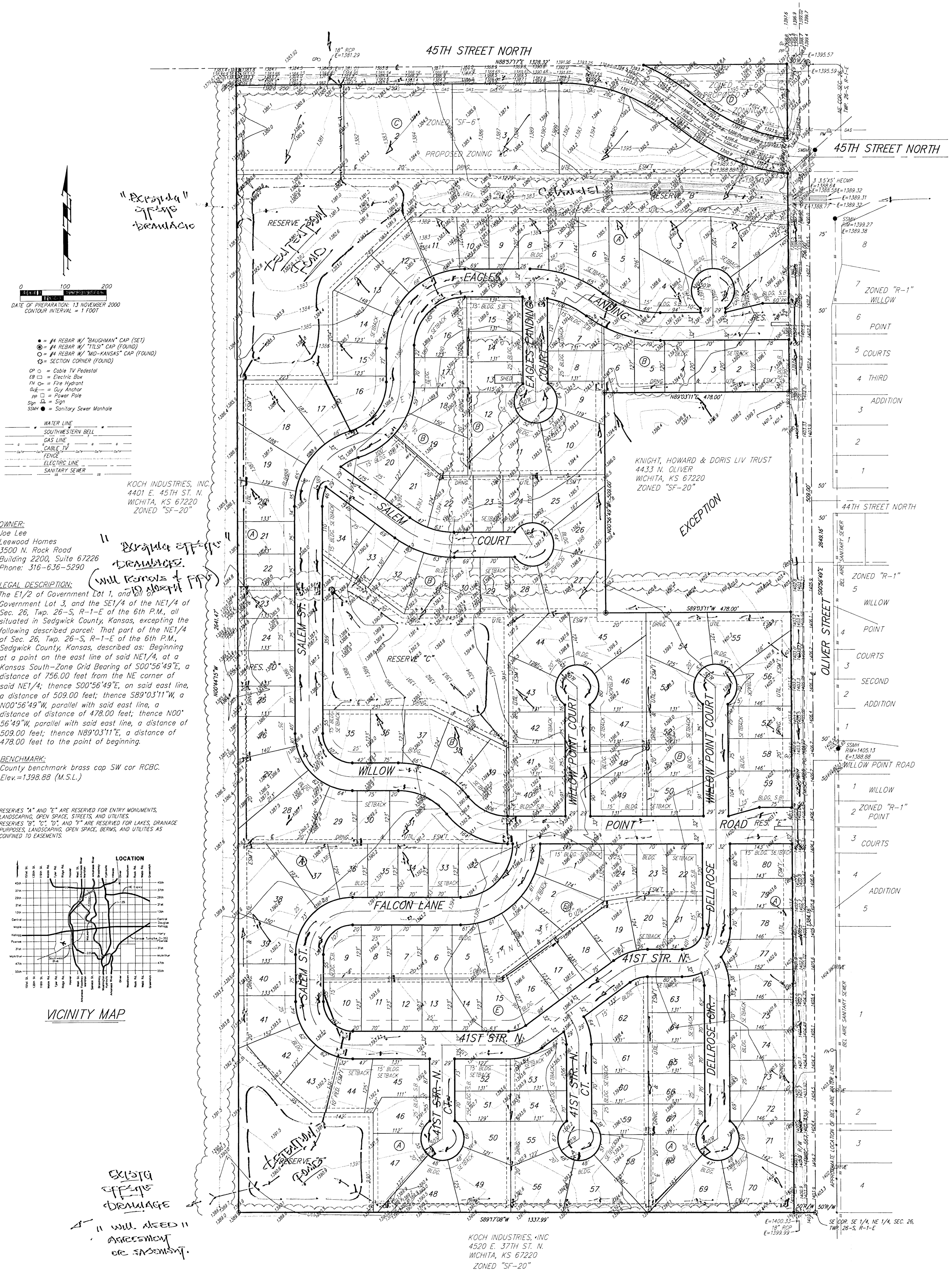


SNP-033130F 9552915E 000279111

# DRAINAGE CONCEPT EAGLES LANDING AT NORTH OLIVER WICHITA, SEDGWICK COUNTY, KANSAS



- = #1 REBAR W/ "DAUGHMAN" CAP (SET)
  - = #1 REBAR W/ "TILE" CAP (FOUND)
  - = #1 REBAR W/ "MO-KANSAS" CAP (FOUND)
  - = SECTION CORNER (FOUND)
  - = Code IV Pedestal
  - = Electric Box
  - = Fire Hydrant
  - = Guy Anchor
  - = Power Pole
  - = Sign
  - = Sanitary Sewer Manhole
- WATER LINE  
SOUTHWESTERN BELL  
GAS LINE  
CABLE TV  
FENCE  
ELECTRIC LINE  
SANITARY SEWER

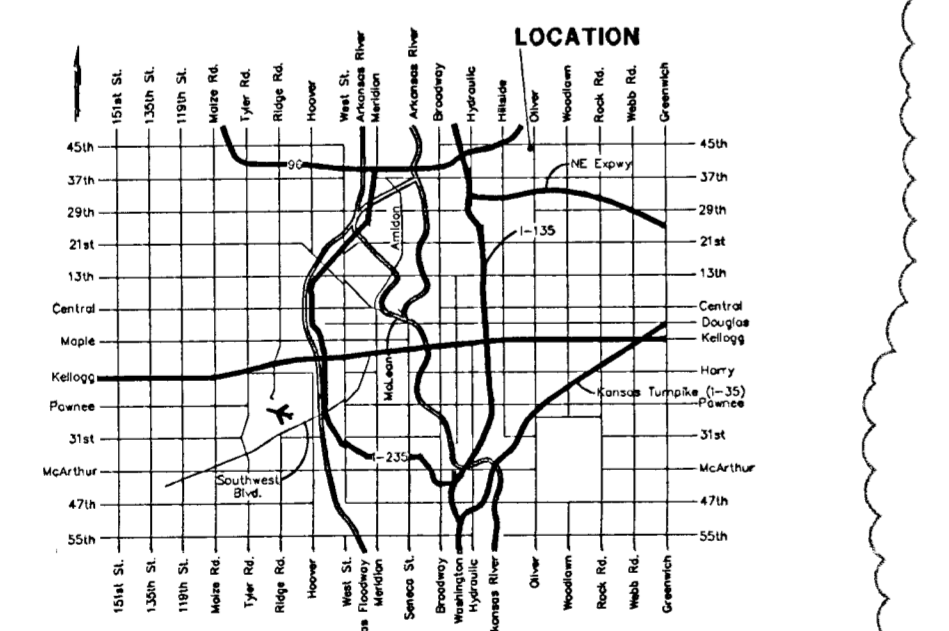
KOCH INDUSTRIES, INC.  
4401 E. 45TH ST. N.  
WICHITA, KS 67220  
ZONED "SF-20"

OWNER:  
Job Lee  
Leewood Homes  
3500 N. Rock Road  
Building 2200, Suite 67226  
Phone: 316-636-5290

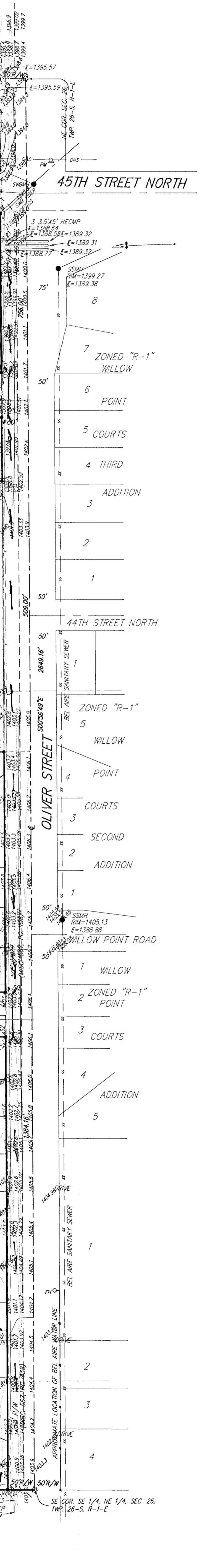
LEGAL DESCRIPTION:  
The E1/2 of Government Lot 1, 070th of Government Lot 3, and the SE1/4 of the NE1/4 of Sec. 26, Twp. 26-S, R-1-E of the 6th P.M., all situated in Sedgwick County, Kansas, excepting the following described parcel: That part of the NE1/4 of Sec. 26, Twp. 26-S, R-1-E of the 6th P.M., Sedgwick County, Kansas, described as: Beginning at a point on the east line of said NE1/4, at a Kansas South-Zone Grid Bearing of S00°56'49"E, a distance of 756.00 feet from the NE corner of said NE1/4, thence S00°56'49"E, on said east line, a distance of 509.00 feet; thence S89°03'11"W, a N00°56'49"W, parallel with said east line, a distance of 478.00 feet; thence N00°56'49"W, parallel with said east line, a distance of 509.00 feet; thence N89°03'11"E, a distance of 478.00 feet to the point of beginning.

BENCHMARK:  
County benchmark brass cap SW cor RCBC.  
Elev.=1398.68 (M.S.L.)

RESERVES "A" AND "E" ARE RESERVED FOR ENTRY MONUMENTS, LANDSCAPING, OPEN SPACE, STREETS, AND UTILITIES.  
RESERVES "B", "C", "D", AND "F" ARE RESERVED FOR LAKES, DRAINAGE PURPOSES, LANDSCAPING, OPEN SPACE, BERMS, AND UTILITIES AS CONFINED TO EASEMENTS.



EXISTG OFFNS DRAINAGE  
"WILL NEED" APPROXIMATE OR. EASEMENT.



KOCH INDUSTRIES, INC.  
4520 E. 37TH ST. N.  
WICHITA, KS 67220  
ZONED "SF-20"