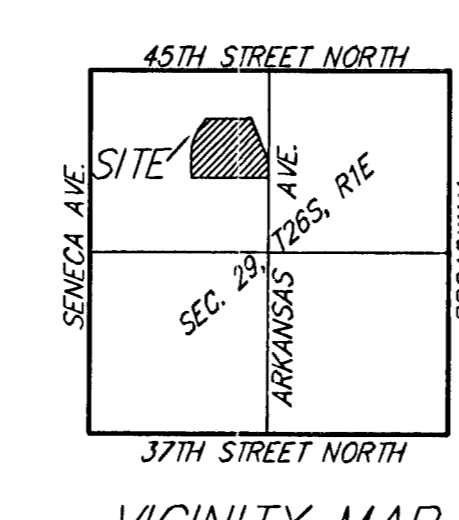
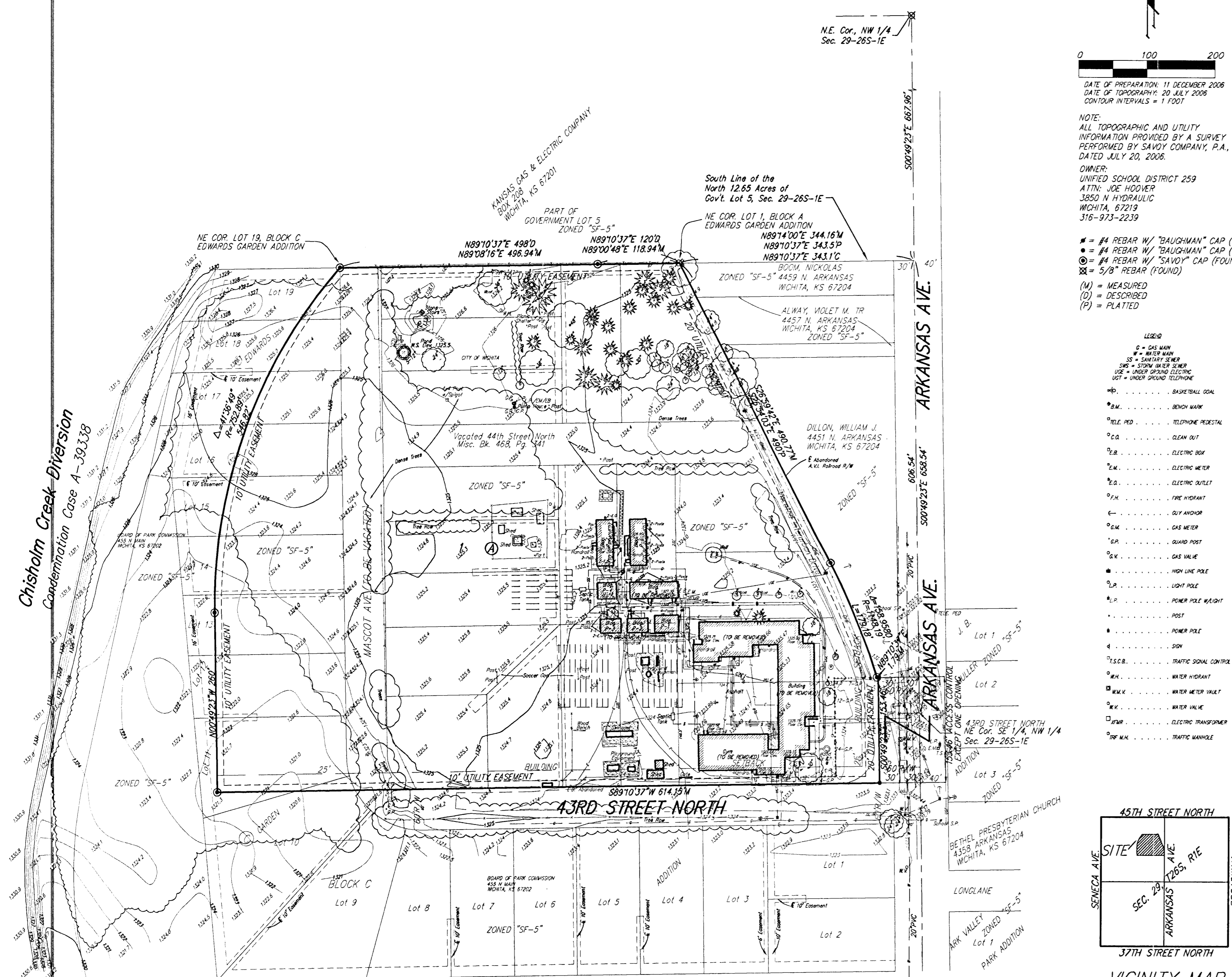


ONE-STEP FINAL PLAT

# EARHART ELEMENTARY SCHOOL

## WICHITA, SEDGWICK COUNTY, KANSAS



MINIMUM BUILDING PAD ELEVATIONS FOR LOWEST OPENING TO THE STRUCTURES		
LOT	BLOCK	ELEVATION
1	A	1322.0

**NOTE:**  
A master grading plan for drainage has been developed for this subdivision and is on file with the City of Wichita, Kansas. All drainage easements, right-of-ways, or reserves shall remain of established grades or as modified with the approval of the City Engineer of the City of Wichita, Kansas. No obstructions which impede the flow of this drainage system be allowed.

Bench Mark: "X" cut on Crosswalk Signal Pole base  
6.4' N and 25.3' E of the NE Cor.  
SE 1/4, NW 1/4 Sec. 29-265-1E  
Elev. 1323.41

State of Kansas) SS  
Sedgwick County) We, *Baughman Company, P.A.*, Surveyors in aforesaid county and state do hereby certify that we have surveyed and platted "EARHART ELEMENTARY ADDITION", Wichita, Sedgwick County, Kansas and that the accompanying plat is a true and correct exhibit of the property surveyed, described as Lots 1 & 2, except the west 54 feet of the north 200 feet of said Lot 2 and Lot 5, except the north 48 feet thereof, Block A, and Lots 1, 2, 3, 4, 5, 6, 7, 8, 9, 10, 11, 12, 13, 14, and 15, Block B, and all of vacated 44th Street North, lying east of the east line of Mascot Avenue extended north and all of vacated Interurban Drive, lying north of the north line of 43rd Street extended east, all in Edward's Gardens, Wichita, Sedgwick County, Kansas, together with that part of the South 52 feet of Government Lot 5 in the Northwest Quarter of Section 29, Township 26 South, Range 1 East of the Sixth Principal Meridian, Sedgwick County, Kansas, and lying east of the center line of the abandoned A.V.I. Railroad right-of-way and that part of the Southeast Quarter of the Northwest Quarter of said Section 29, lying east of the center line of the abandoned A.V.I. Railroad right-of-way. The west 54 feet of the north 200 feet of Lot 2 and the north 48 feet of Lot 5 and all of Lots 3 and 4, Block A, and that part of 44th Street North, lying north of the south line of the north 48 feet of Lot 5, extended west and east of the east line of Mascot Avenue extended north, Edward's Gardens, Wichita, Sedgwick County, Kansas, together with that part of Lots 10, 11, 12, 13, 14, 15, 16, 17, 18 and 19, Block C, Edward's Gardens, Wichita, Sedgwick County, Kansas described as beginning at the N.E. Corner of said Lot 19; thence S00°49'23"E, along the west line of Mascot Avenue, as platted in said Edward's Gardens, 710 feet to the P.C. of a curve to the left, having a radius of 110 feet; thence southerly along said curve and through a central angle of 27°02'08", 51.90 feet to the point of intersection with the north line of 43rd Street North as extended west; thence S89°10'37"W, along said extended north line, 202.02 feet; thence N00°49'23"W, 260 feet to the P.C. of a curve to the right having a radius of 752.89 feet; thence northeasterly, along said curve and through a central angle of 41°36'49", 546.82 feet to the place of beginning, together with all of Mascot Avenue as platted in Edward's Gardens, Wichita, Sedgwick County, Kansas, lying north of the north line of 43rd Street North extended west.

Existing public easements and dedications being vacated by virtue of K.S.A. 12-512(b).  
*Baughman Company, P.A.*  
\_\_\_\_\_, Surveyor  
*Michael G. Conrey*

Know all men by these presents that we, the undersigned, have caused the land in the surveyors certificate to be platted into a Lot, a Block, and Streets, to be known as "EARHART ELEMENTARY ADDITION", Wichita, Sedgwick County, Kansas. The utility easements are hereby granted as indicated for the construction and maintenance of all public utilities. The drainage and utility easements are hereby granted as indicated for drainage purposes and for the construction and maintenance of all public utilities. The streets are hereby dedicated to and for the use of the public. Access controls shall be as depicted on the face of the plat and are hereby granted to the City of Wichita, Kansas. The permitted opening locations shall be as determined by the City Engineer of the City of Wichita, Kansas. The Minimum Building Pad Elevations for the lowest opening to the structures shall be as indicated on the face of the plat.

Unified School District 259  
\_\_\_\_\_, President  
*Sarah Skelton*

State of Kansas) SS  
Sedgwick County) The foregoing instrument acknowledged before me, this \_\_\_\_\_ day of \_\_\_\_\_, 2006, by Sarah Skelton, President of Unified School District 259, on behalf of the corporation.

\_\_\_\_\_, Notary Public  
My App't. Exp. \_\_\_\_\_

This plat of "EARHART ELEMENTARY ADDITION", Wichita, Sedgwick County, Kansas has been submitted to and approved by the Wichita-Sedgwick County Metropolitan Area Planning Commission, Wichita, Kansas.  
Dated this \_\_\_\_\_ day of \_\_\_\_\_, 2006.  
Wichita-Sedgwick County Metropolitan Area Planning Commission

\_\_\_\_\_, Chair  
*Darrell A. Downing*  
\_\_\_\_\_, Secretary  
*John L. Schlegel*

This plat approved and all dedications shown hereon accepted by the City Council of the City of Wichita, Kansas, this \_\_\_\_\_ day of \_\_\_\_\_, 2006.

\_\_\_\_\_, Mayor  
*Carlos Mayans*  
\_\_\_\_\_, City Clerk  
*Karen Sublett*

Reviewed in accordance with K.S.A. 58-2005 on this \_\_\_\_\_ day of \_\_\_\_\_, 2006.

\_\_\_\_\_, Deputy County Surveyor  
*Tricia L. Robello, L.S. #1246*  
Sedgwick County, Kansas

Entered on transfer record this \_\_\_\_\_ day of \_\_\_\_\_, 2006.

\_\_\_\_\_, County Clerk  
*Don Brace*

State of Kansas) SS  
Sedgwick County) This is to certify that this plat has been filed for record in the office of the Register of Deeds, this \_\_\_\_\_ day of \_\_\_\_\_, 2006 at \_\_\_\_\_ o'clock \_\_\_\_\_ M; and is duly recorded.

\_\_\_\_\_, Register of Deeds  
*Bill Meek*  
\_\_\_\_\_, Deputy  
*Tonya Buckingham*

**EARHART ELEMENTARY SCHOOL**  
11 DECEMBER 2006

**Baughman Company, P.A.**  
315 Ellis St. Wichita, KS 67211 P 316-262-7271 F 316-262-0149  
ENGINEERING | SURVEYING | PLANNING | LANDSCAPE ARCHITECTURE  
E:\PLAT\EARHARTADDITION\DWG\EARHART.P.DWG