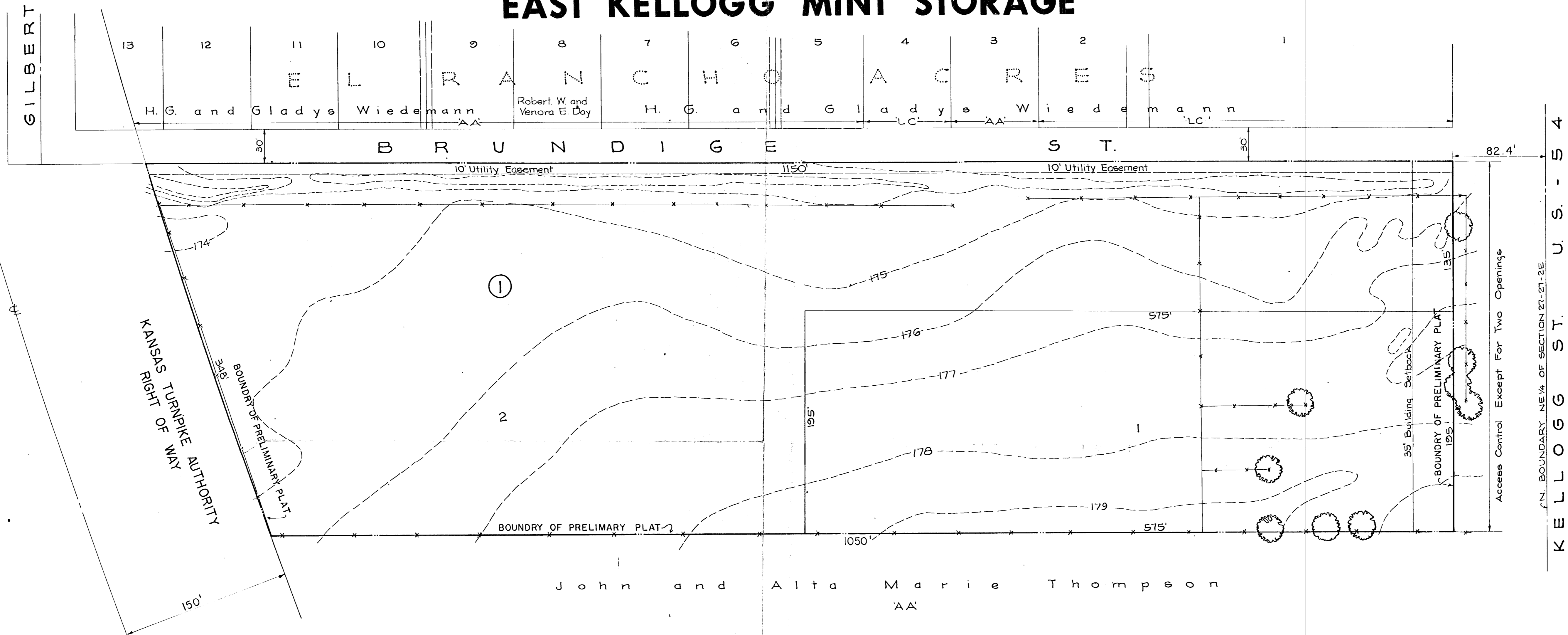


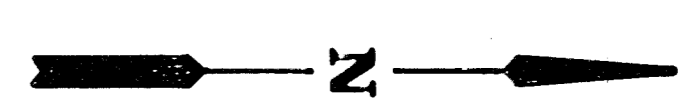
PRELIMINARY PLAT OF

EAST KELLOGG MINI STORAGE

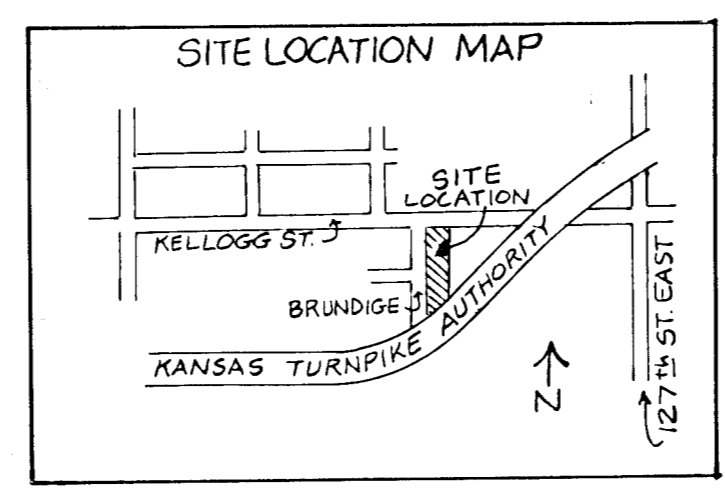
BENCH MARK- City Dec. 75' West and
6' North of N 1/4 Cor. Sec 27-27-2E
Elev. = 174.70



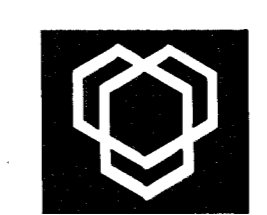
KELLOGG ST. U.S. - S 4



SCALE 1" = 50'
JULY 10, 1981



Owner and Developer
Keith Anderson
1175 S. Rock Rd.
Wichita, KS 67207
681-1711



Van Doren - Hazard - Stallings

Architects • Engineers • Planners
Topeka Wichita Minneapolis

Sheet
of