

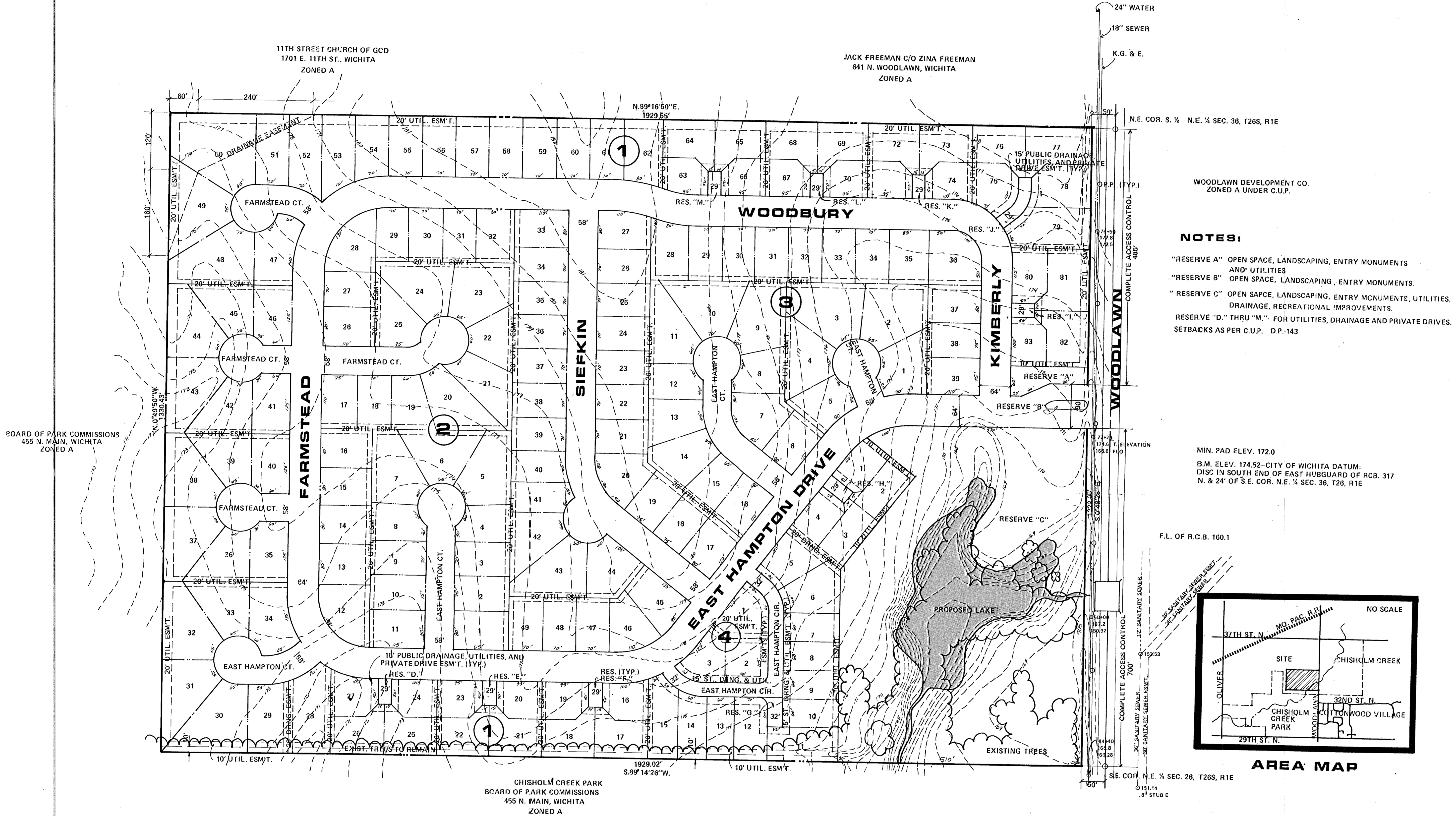


BILL G. YUNG DESIGN
8225 E. 35TH ST. NORTH, WICHITA, KS. 67226
316-683-5567

date **MARCH 1, 1986**
rev. **MAY 21, 1985**

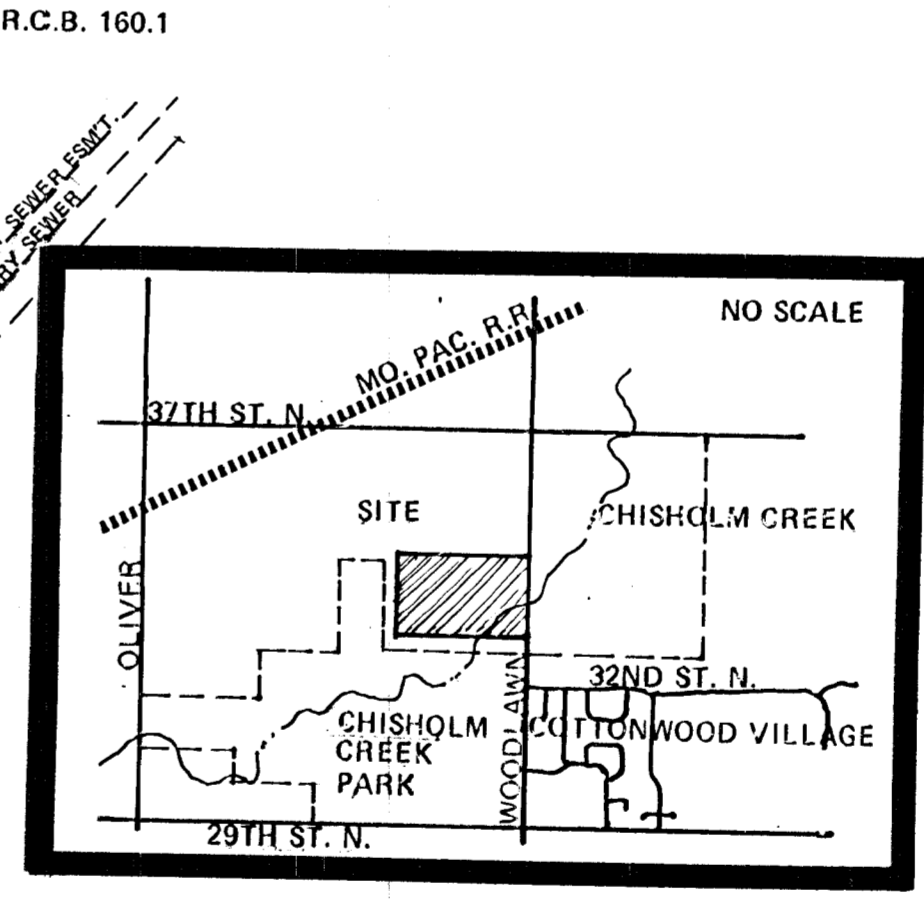
sheet title
PRELIMINARY PLAT

sheet 1 Project **EAST HAMPTON**
of 1



NOTES:
"RESERVE A" OPEN SPACE, LANDSCAPING, ENTRY MONUMENTS AND UTILITIES
"RESERVE B" OPEN SPACE, LANDSCAPING, ENTRY MONUMENTS.
"RESERVE C" OPEN SPACE, LANDSCAPING, ENTRY MONUMENTS, UTILITIES, DRAINAGE, RECREATIONAL IMPROVEMENTS.
RESERVE "D." THRU "M." FOR UTILITIES, DRAINAGE AND PRIVATE DRIVES. SETBACKS AS PER C.U.P. D.P.-143

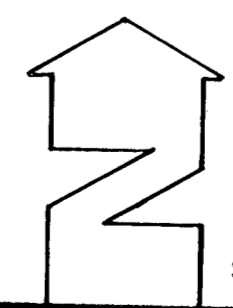
MIN. PAD FLEV. 172.0
B.M. ELEV. 174.92-CITY OF WICHITA DATUM:
DISC IN SOUTH END OF EAST HUBGUARD OF RCB. 317
N. & 24' OF S.E. COR. N.E. 1/4 SEC. 36, T26, R1E



AREA MAP

PRELIMINARY PLAT

EAST HAMPTON



SCALE: 1"=100'

OWNER: WOODLAWN LAND COMPANY, 434 N. OLIVER, SUITE 108, WICHITA, KS