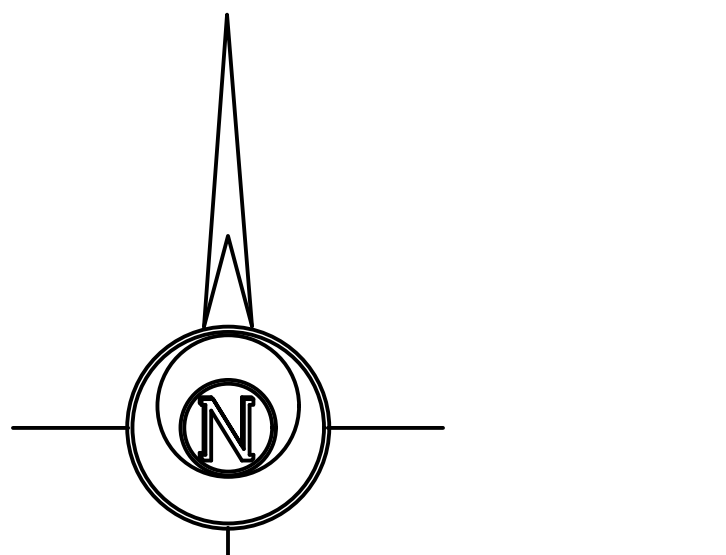
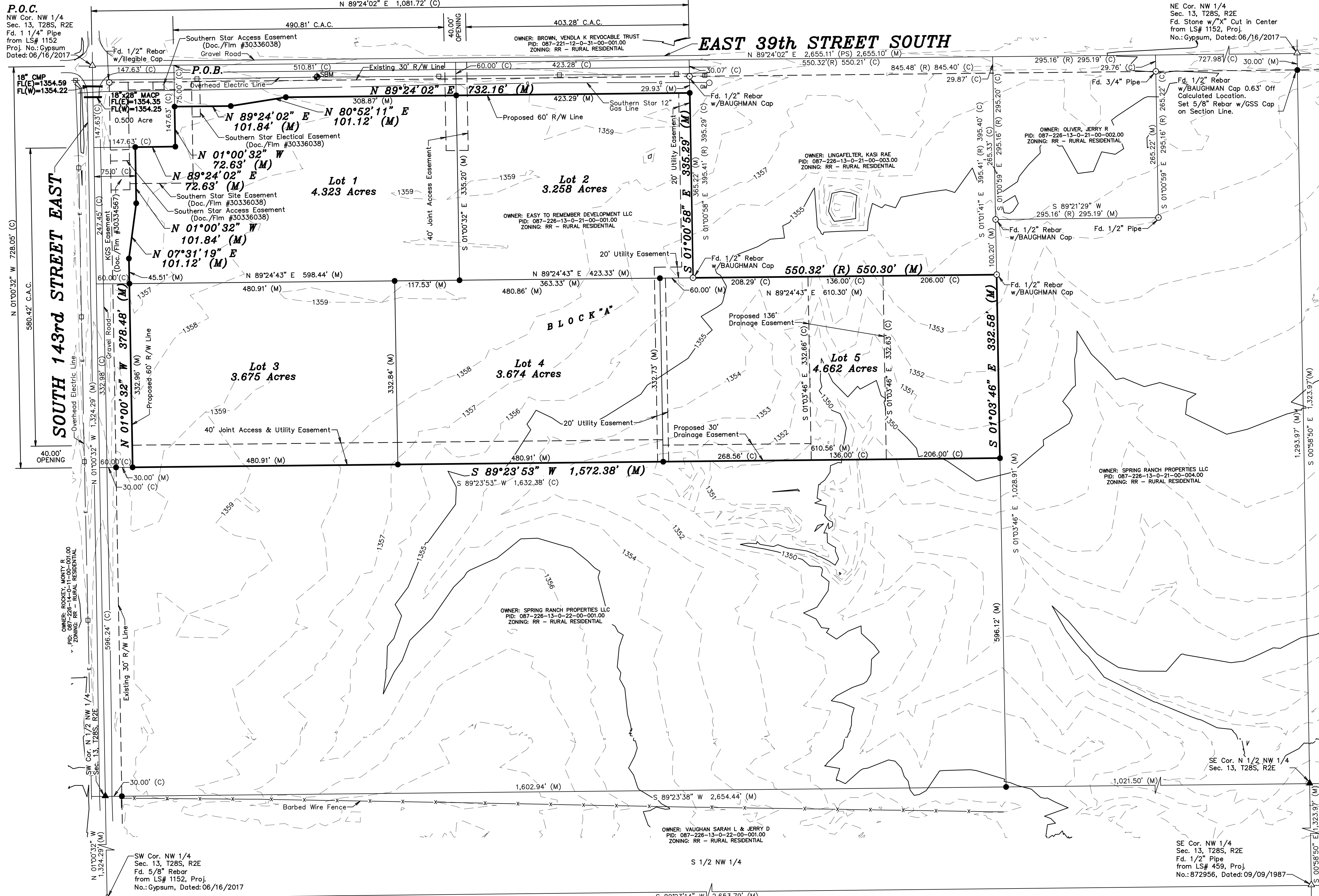


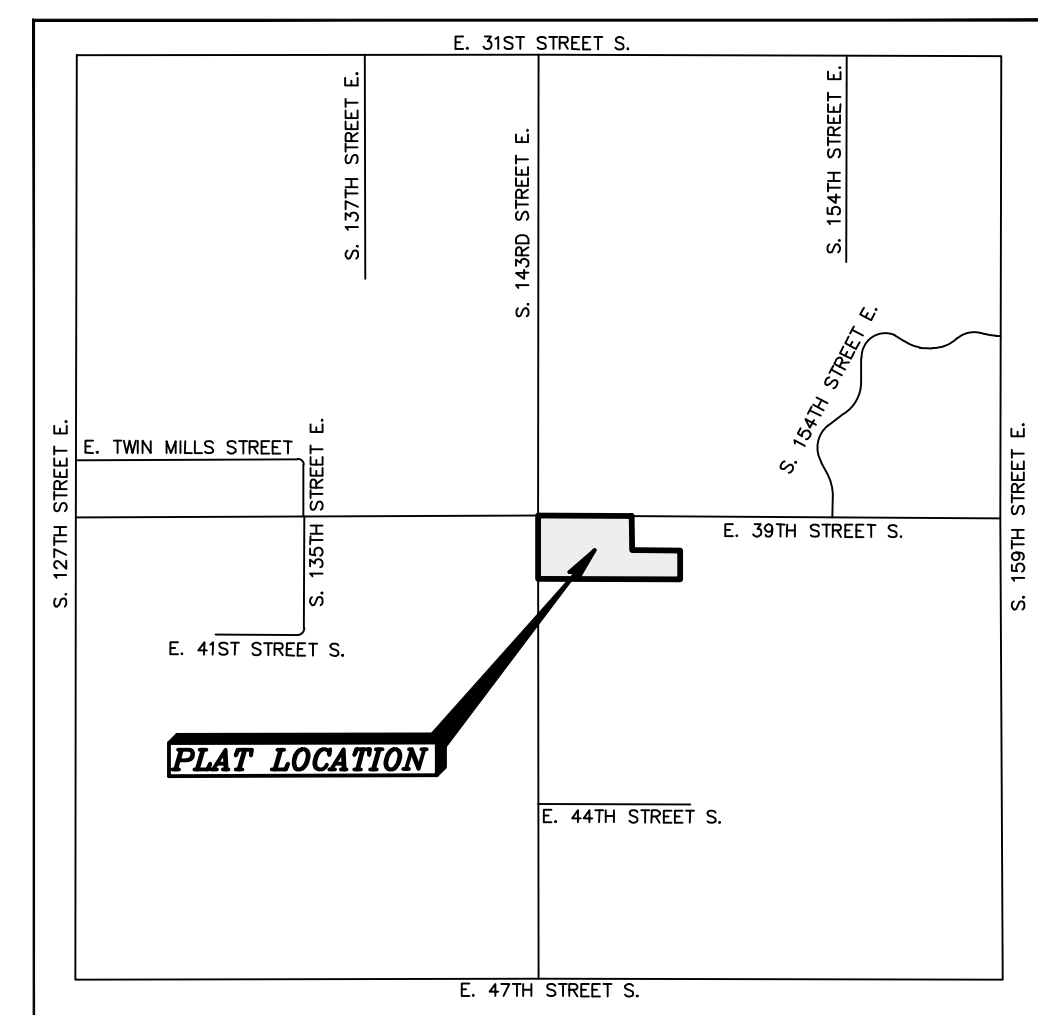
PRELIMINARY PLAT

PRAIRIE LAND ESTATES

A PORTION OF THE NORTHWEST QUARTER OF SECTION 13, TOWNSHIP 28 SOUTH, RANGE 2 EAST OF THE 6TH PRINCIPAL MERIDIAN, SEDGWICK COUNTY, KANSAS.



BASIS OF BEARING = NAD 83 KANSAS SOUTH ZONE

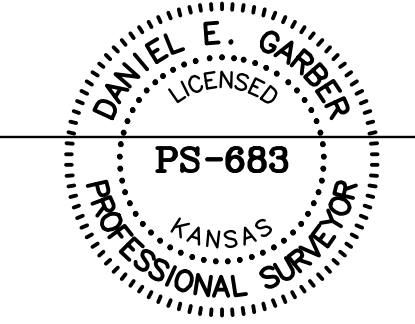


SEDGWICK COUNTY, KANSAS
VICINITY MAP
(NOT DRAWN TO SCALE)

LAND SURVEYOR'S CERTIFICATE AND DESCRIPTION

I, Daniel E. Garber, Professional Land Surveyor of the State of Kansas, do hereby certify that the following described tract of land was surveyed on August 19, 2024 and the accompanying Final Plat prepared and that all monuments shown herein actually exist and their positions are correctly shown to the best of my knowledge and belief:
A portion of the North Half of the Northwest Quarter of Section 13, Township 28 South, Range 2 East of the 6th Principal Meridian, Sedgwick County, Kansas, more particularly described by Daniel E. Garber, Professional Surveyor #683, on December 11, 2024 as follows:
Commencing at the Northwest corner of the Northwest Quarter of Section 13, Township 28 South, Range 2 East of the 6th Principal Meridian; Thence with a bearing of North 89°24'02" East (basis of bearings is NAD 83 Kansas South Zone) along the North line of said Northwest Quarter a distance of 147.63 feet for the point of beginning; Thence continuing North 89°24'02" East along the North line of said Northwest Quarter a distance of 934.09 feet; Thence South 01°00'32" East a distance of 395.29 feet (395.41 feet per Record); Thence North 89°24'43" East a distance of 550.30 feet (550.32 feet per Record); Thence South 01°03'46" East a distance of 332.66 feet; Thence South 89°23'53" West a distance of 1,632.38 feet to the West line of said Northwest Quarter; Thence North 01°00'32" West along the West line of said Northwest Quarter a distance of 580.42 feet; Thence North 89°24'02" East parallel with the North line of said Northwest Quarter a distance of 147.63 feet; Thence North 01°00'32" West parallel with the West line of said Northwest Quarter a distance of 147.63 feet to the point of beginning, containing **21.762 Acres**.

Date: December 11, 2024



PRELIMINARY PLAT		Description: PRAIRIE LAND ESTATES SEDGWICK COUNTY, KANSAS	
Prepared By: Garber Surveying Service, P.A.		2908 North Plum St. 67502 Branch Offices: MCPHERSON Ph. 620-241-4441 SALINA Ph. 785-404-6302 WICHITA Ph. 316-260-9933	
Drawn By: MGO	Scale: 1"=100'	Date of Field Work: August 19, 2024	Job No:
Checked By: DEG	Date: 12/11/2024	Sheet 1 of 1 Sheet(s)	G2024-522