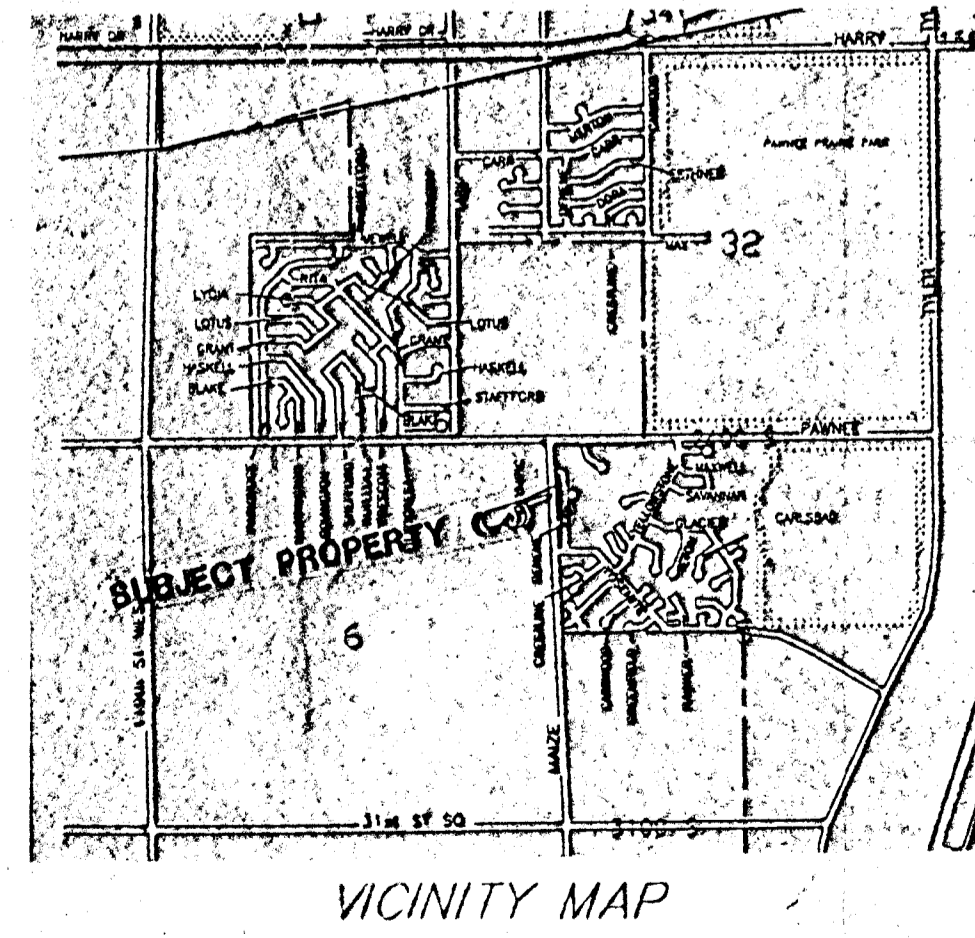
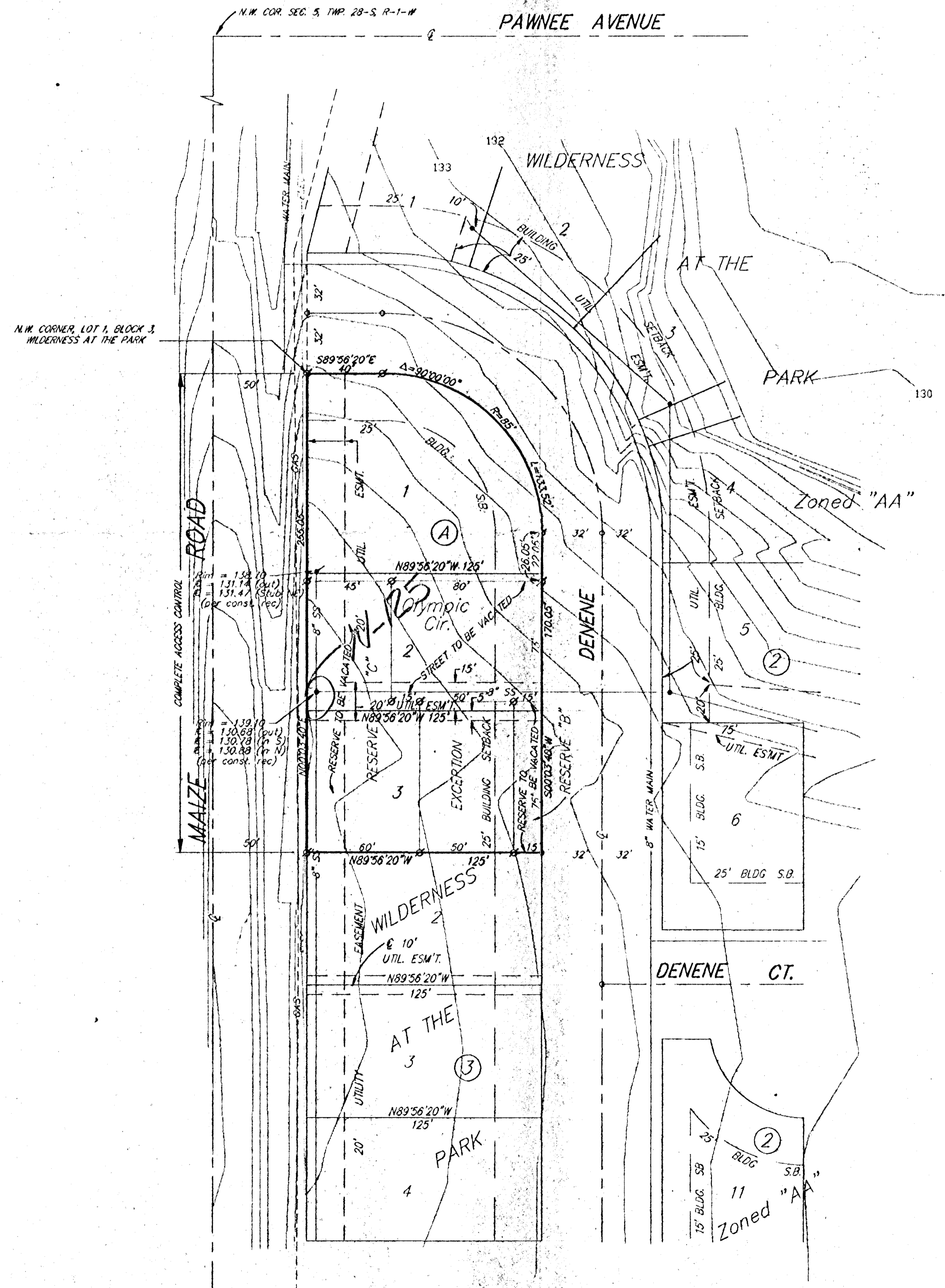



SKETCH PLAT

WILDERNESS AT THE PARK 2ND

AN ADDITION TO

WICHITA, SEDGWICK COUNTY, KANSAS




SCALE
 1" = 40'
 ● = 1/2" Rebar #7 BAUGHMAN Cop (set)
 ○ = 1/2" Rebar #7 BAUGHMAN Cop (found)

OWNER
 A-K Corporation
 Attn: A. J. Soerries
 302 W. West St.
 Wichita, KS 67203
 (316) 943-2308

LEGAL
 A replat of Lot 1, Blk. 3, Reserve "B",
 Reserve "C", Olympic Circle, and
 the Exception within Wilderness
 At The Park, an addition to
 Wichita, Sedgwick County, Kansas.

BENCHMARK
 City Standard Disc, 42.3' S.
 & 49.5' W. of E. of Maize Road
 & Pawnee Avenue
 Elev. = 135.10 (city datum)
 = 1322.50 (M.S.L.)

21 September 1994