

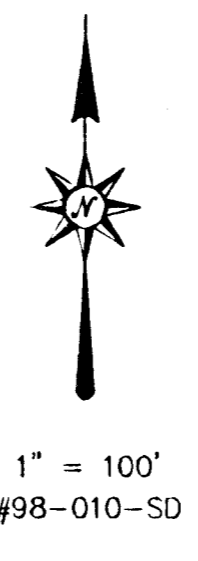
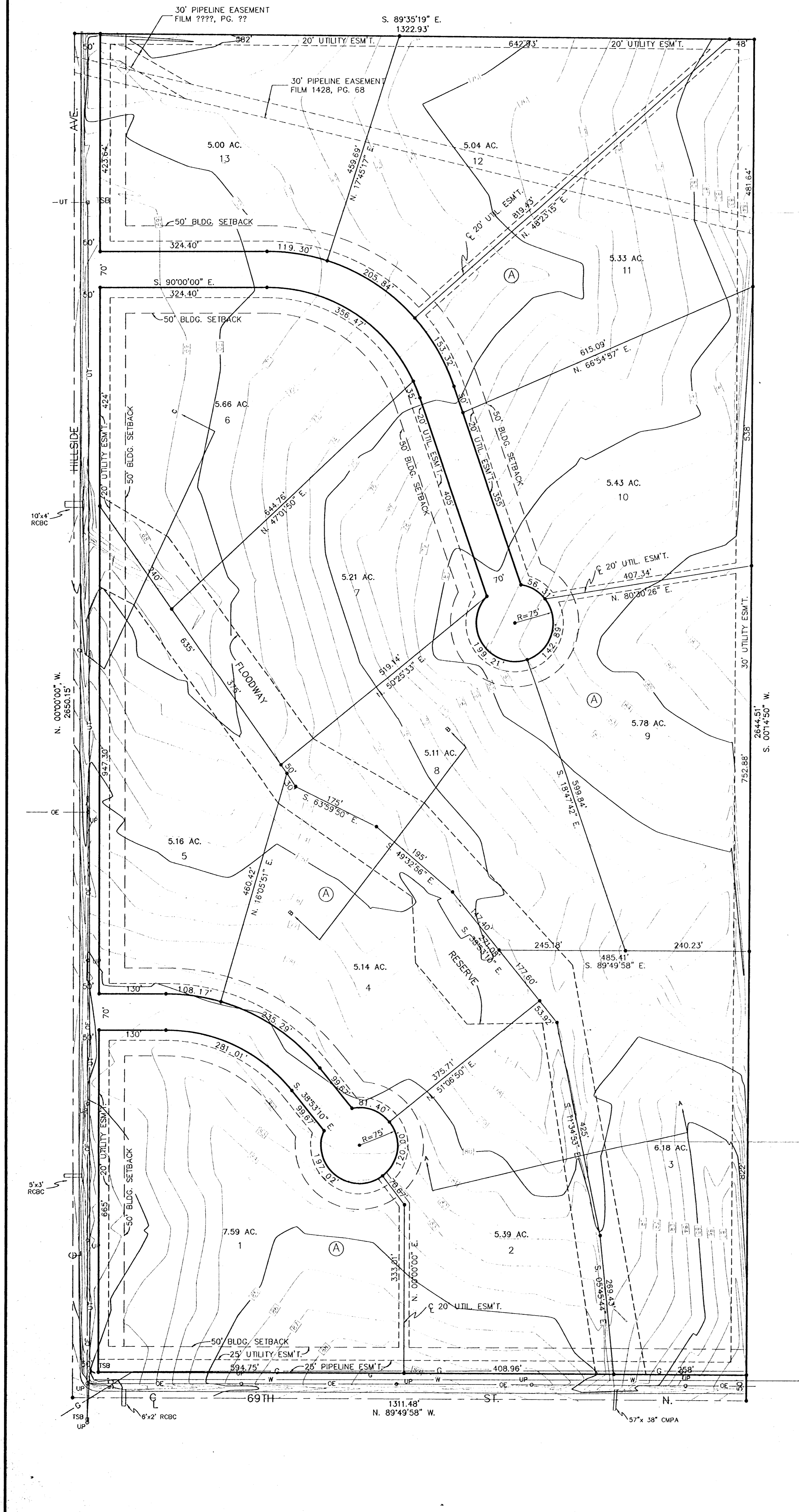
PRELIMINARY PLAT
OF
WILDWOOD ACRES
AN ADDITION TO SEDGWICK COUNTY, KANSAS

LEGAL DESCRIPTION

THE WEST HALF OF THE S.W. 1/4, SECTION 2,
TOWNSHIP 26 SOUTH, RANGE 1 EAST OF THE 6TH
P.M., SEDGWICK COUNTY, KANSAS.

OWNERS

JACK & NYLA HOBBS



BENCHMARK

CHISELED SQUARE ON CTR. OF N. HUBGUARD
R.C.B.C., 100' EAST OF THE S.W. COR., SEC. 2.
ELEV. = 1385.98 M.S.L.



MOEHRING & ASSOCIATES
CONSULTING ENGINEERS - SURVEYORS
435 S. HYDRAULIC WICHITA, KS.
(316) 263-8291
MAY 1, 1998