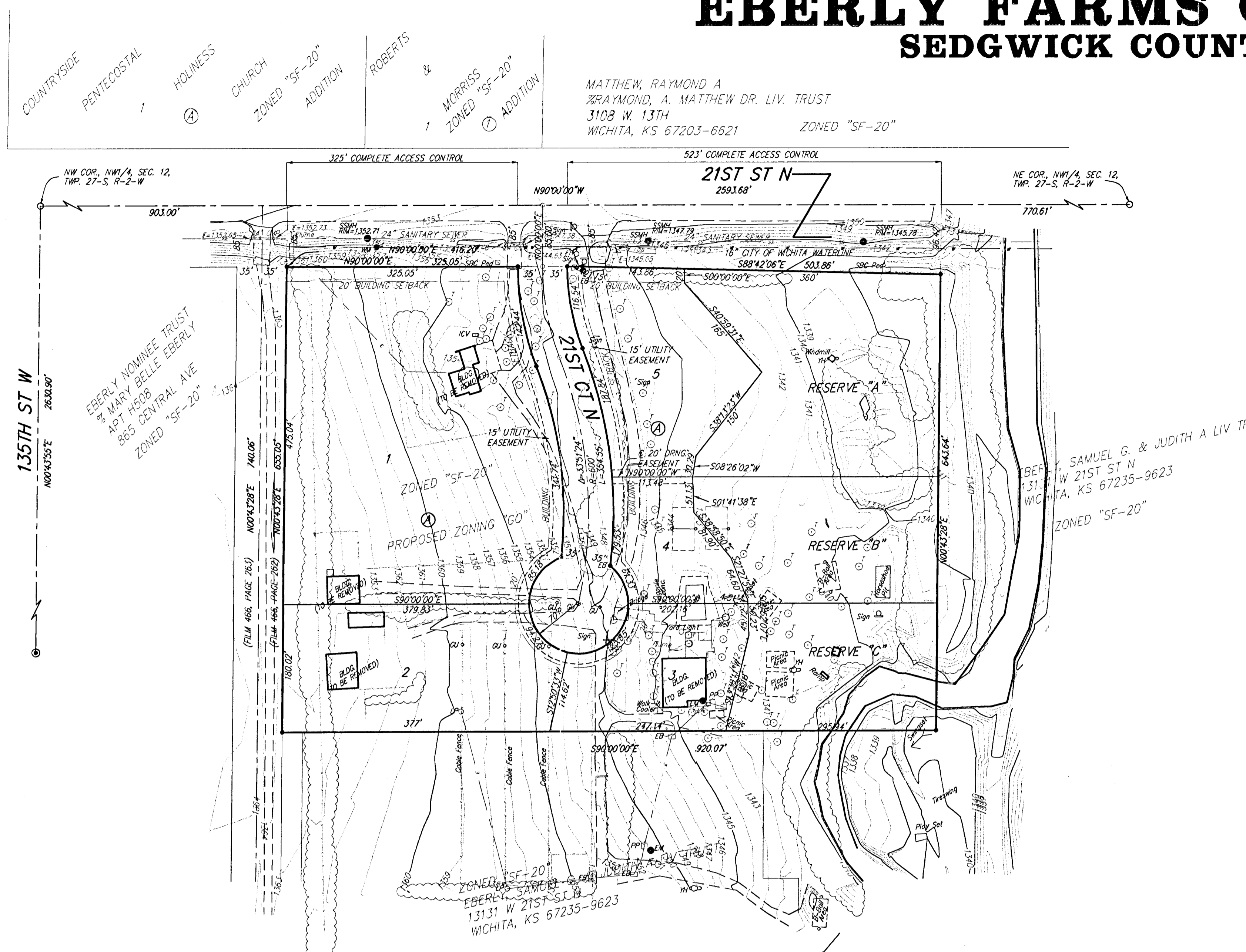


ONE-STEP FINAL PLAT

EBERLY FARMS OFFICE PARK

SEDGWICK COUNTY, KANSAS



MATTHEW, RAYMOND A
 & RAYMOND, A. MATTHEW DR. LIV. TRUST
 3108 W. 13TH
 WICHITA, KS 67203-6621 ZONED "SF-20"

State of Kansas) SS
 Sedgwick County) We, Baughman Company, P.A., Surveyors in
 aforesaid county and state do hereby certify that we have surveyed and
 platted "EBERLY FARMS OFFICE PARK", Sedgwick County, Kansas and that
 the accompanying plat is a true and correct exhibit of the property
 surveyed, described as the east 920.00 feet of the west 1823.00 feet of
 the north 740.00 feet of the NW 1/4 of Sec. 12, Twp 27-S, R-2-W of the
 6th P.M., Sedgwick County, Kansas, subject to road rights-of-way of
 record.

This plat of "EBERLY FARMS OFFICE PARK",
 Sedgwick County, Kansas has been submitted to and approved by the
 Wichita-Sedgwick County Metropolitan Area Planning Commission, Wichita,
 Kansas.
 Dated this ____ day of _____, 2005.
 Wichita-Sedgwick County Metropolitan Area Planning Commission

Existing public easements and dedications
 being vacated by virtue of K.S.A. 12-512(b).

Baughman Company, P.A.

_____, Surveyor
 Michael G. Conrey

_____, Chair
 Morris K. Dunlap

_____, Secretary
 John L. Schlegel

This plat approved and all dedications
 shown hereon accepted by the City Council of the City of Wichita,
 Kansas, this ____ day of _____, 2005.

_____, Mayor
 Carlos Mayans

_____, City Clerk
 Karen Sublett

This plat approved and all dedications
 shown hereon accepted by the Board of Commissioners of
 Sedgwick County, Kansas, this ____ day of _____, 2005.

_____, Chairman
 David Unruh

ATTEST: _____, County Clerk
 Don Brace

Reviewed in accordance with K.S.A. 58-2005
 on this ____ day of _____, 2005.

_____, Deputy County Surveyor
 Tricia L. Robello, L.S. #1246

Entered on transfer record this ____ day
 of _____, 2005.

_____, County Clerk
 Don Brace

State of Kansas) SS This is to certify that this plat has been
 Sedgwick County) filed for record in the office of the Register of Deeds, this ____ day
 of _____, 2005 at ____ o'clock ____ M; and is duly recorded.

_____, Register of Deeds
 Bill Meek

_____, Deputy
 Tonya Buckingham

State of Kansas) SS
 Sedgwick County) The foregoing instrument acknowledged before
 me, this ____ day of _____, 2005, by Samuel G. Eberly, Trustee of the
 Samuel G. & Judith A. Eberly Living Trust, on behalf of the trust.

_____, Notary Public

My App't. Exp. _____

Samuel G. & Judith A. Eberly Living Trust

_____, Trustee
 Samuel Eberly

MINIMUM BUILDING PAD ELEVATIONS FOR LOWEST OPENING TO THE STRUCTURES		
LOT	BLOCK	ELEVATION MSL
3,4,5	A	1,342.0

BENCHMARK:
 City of Wichita Std. disc SW corner of the intersection
 of 135th St. W. and 21st St. N.
 Elevation = 1358.59 NGVD29

- #4 REBAR W/ "BAUGHMAN" CAP (SET)
- #4 REBAR W/ 2" "SEDGWICK COUNTY" CAP (FOUND)
- 3/4" IRON IN THIMBLE (FOUND)
- (M) = MEASURED
- (D) = DESCRIBED
- (P) = PLATTED
- (C) = CALCULATED

- EB □ = Electric Box
- FV ○ = Fire Hydrant
- QU ○ = Quard Post(Ballard)
- ICV □ = Irrigation Control Valve - Valve Box
- LP ○ = Light Pole
- EM ○ = Electric Meter
- PP □ = Power Pole
- SP ○ = Sign
- SSM ○ = Sanitary Sewer Manhole
- SSC Ped □ = SSC Pedestal
- T ○ = Tree
- WW ○ = Cased Well
- WM ○ = Water Meter
- HY OD = Yard Hydrant(Spigel)

NOTE:
 A drainage plan has been developed for this subdivision and is on file with
 the County Engineer of the appropriate governing body. Drainage intent shall
 remain as depicted or as modified with the approval of the County Engineer
 of the appropriate governing body. No obstructions which impede the flow of
 this drainage plan shall be allowed.